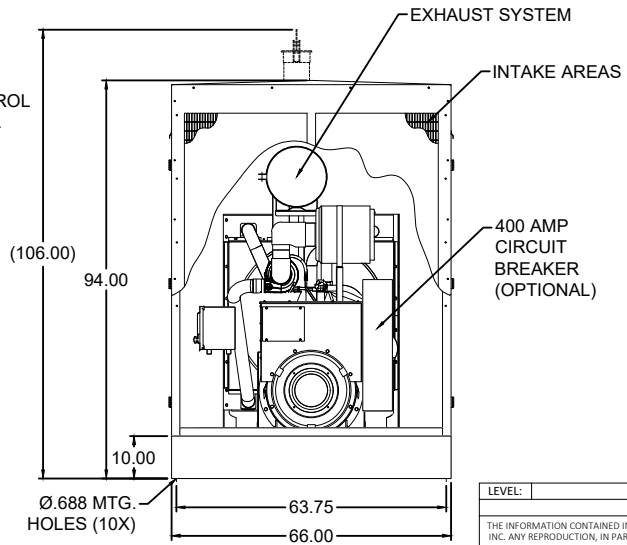
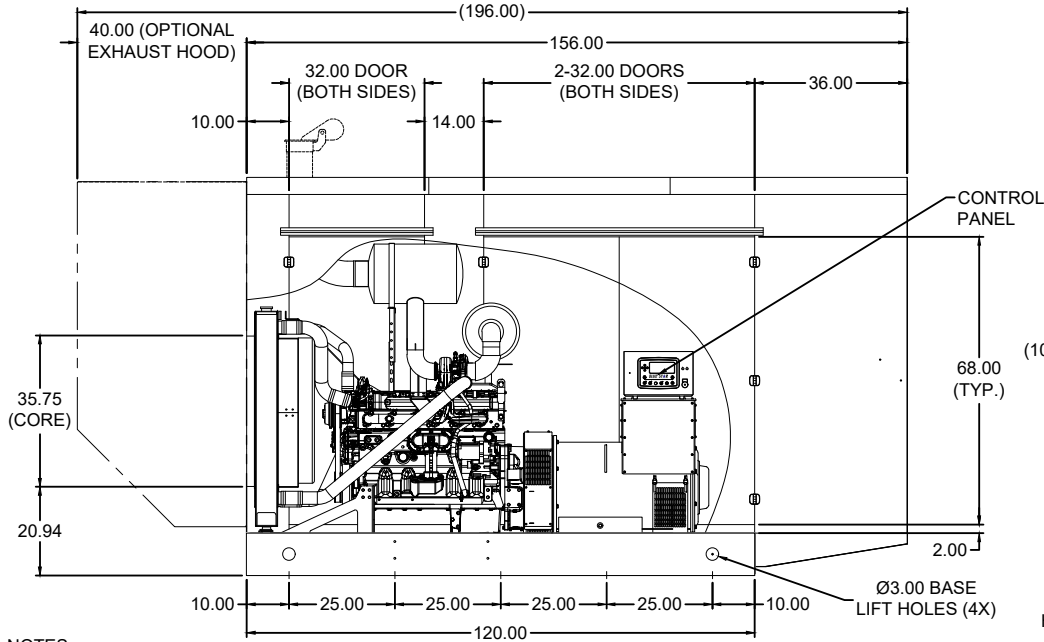
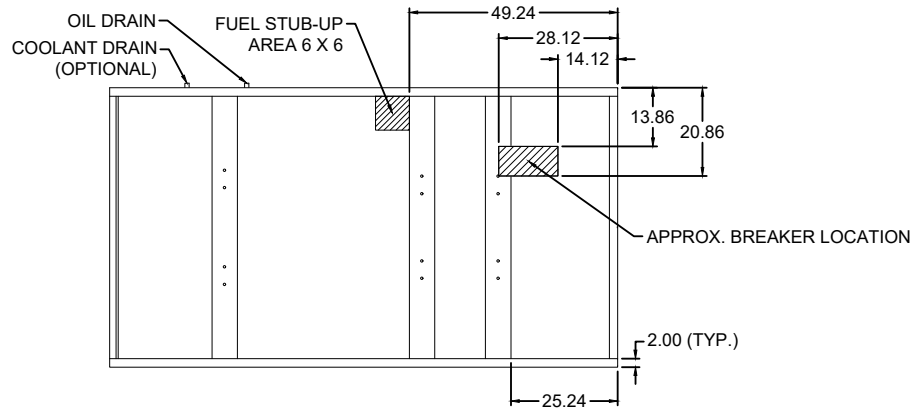



- NOTES:
1. BREAKER LOCATION IS APPROXIMATE
2. DUCT FLANGE WIDTH: 39.16
3. FUEL SUPPLY: 1/2" FUEL RETURN: 3/8"
4. (XX.XX) DIMENSIONS ARE FOR REFERENCE ONLY

LEVEL:	DESCRIPTION:	DATE:	BY:
REVISIONS:			
THE INFORMATION CONTAINED IN THIS DRAWING IS THE SOLE PROPERTY OF BLUE STAR POWER SYSTEMS, INC. ANY REPRODUCTION, IN PART OR AS A WHOLE, WITHOUT THE WRITTEN PERMISSION IS PROHIBITED.			
 BLUE STAR Power Systems Inc.		2250 CARLSON DRIVE, NORTH MANKATO, MINNESOTA 56003 1 507 345 1776	
DRAWN BY: RPS	ENGINE: 6090HF484	BASE: 18313	TANK: NONE
DATE: 11-02-2022	GENERATOR: SAL1S-D4	HSG: NONE	SIZE: B
		SCALE: NONE	SHEET: 1 OF 1



NOTES:

1. BREAKER LOCATION IS APPROXIMATE
2. RADIATOR CORE WIDTH: 39.25"
3. FUEL SUPPLY: 1/2" FUEL RETURN: 3/8"
5. EXHAUST HOOD INCLUDED LEVEL 3 ENCLOSURE ONLY
6. EXHAUST ROUTED THROUGH EXHAUST HOOD LEVEL 3 ENCLOSURE ONLY
7. SOUND ATTENUATION FOAM INCLUDED LEVEL 2 & 3 ENCLOSURES ONLY
8. (XX.XX) DIMENSIONS ARE FOR REFERENCE ONLY

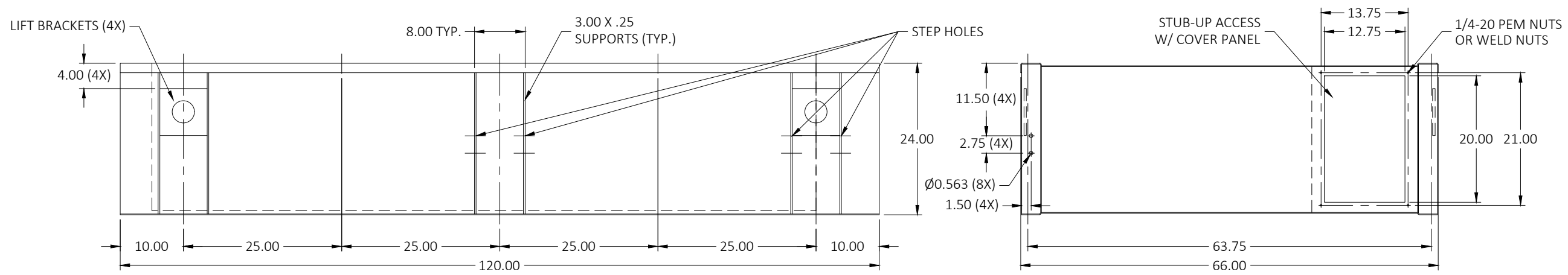
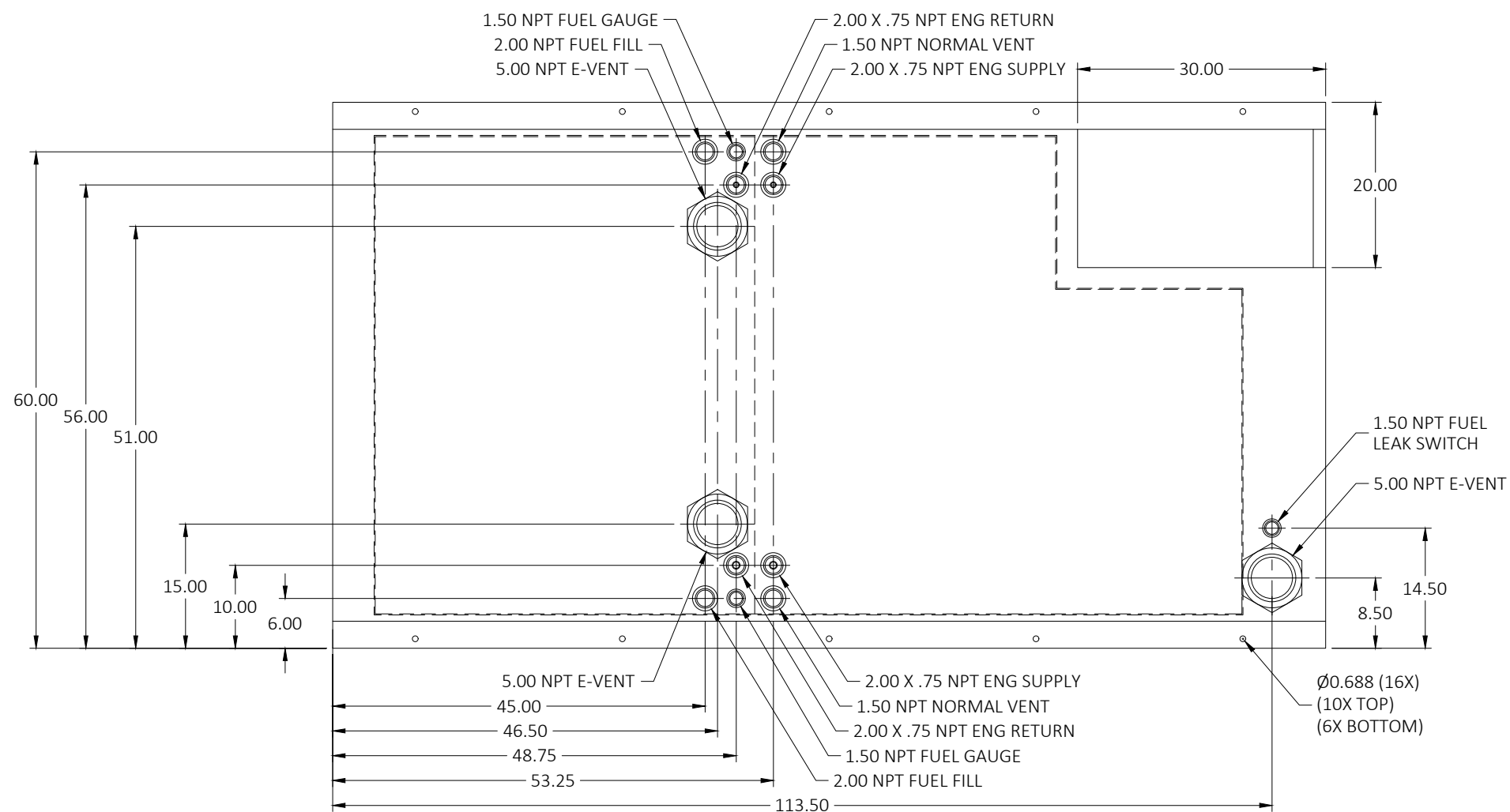
LEVEL:	DESCRIPTION:	DATE:	BY:
REVISIONS:			
THE INFORMATION CONTAINED IN THIS DRAWING IS THE SOLE PROPERTY OF BLUE STAR POWER SYSTEMS, INC. ANY REPRODUCTION, IN PART OR AS A WHOLE, WITHOUT THE WRITTEN PERMISSION IS PROHIBITED.			
		BLUE STAR Power Systems Inc.	
DRAWN BY: MJK	2250 CARLSON DRIVE, NORTH MANKATO, MINNESOTA 56003 1 507 345 1776		
DATE: 11-30-2022	ENGINE: 6090HF484	BASE: 18313	TANK: NONE
GENERATOR: S4L1S-D4	HSG: WPE-105	SIZE: B	SCALE: NONE SHEET: 1 OF 1

DRAWING:

19153

24HR / 540GL FUEL TANK

JD250-02, JD275-02, JD300-02
 PD250-01, PD300-01
 VD230-01, VD250-01, VD250-03,
 VD275-01, VD300-01
 VD250-02FT4, VD300-02FT4
 LV0 / LV1 / LV2 / LV3



NOTES:

- MATERIAL: PER UL/ULC REQUIREMENTS
- SECONDARY CONTAINMENT TANK
- TANK TO INCLUDE:
 - FUEL SUPPLY/RETURN DIP TUBES
 - LIFTING/TIE-DOWN BRACKETS

MATERIAL: SEE NOTES

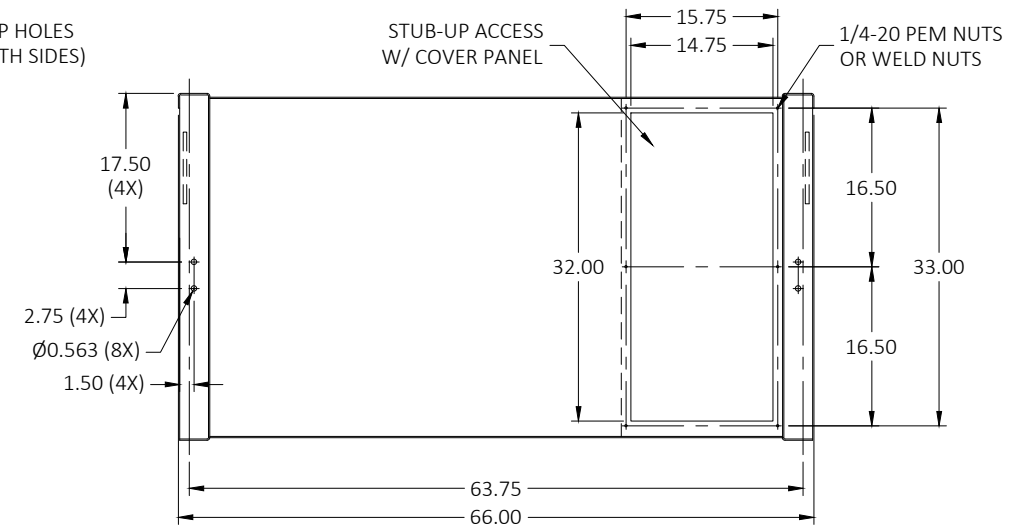
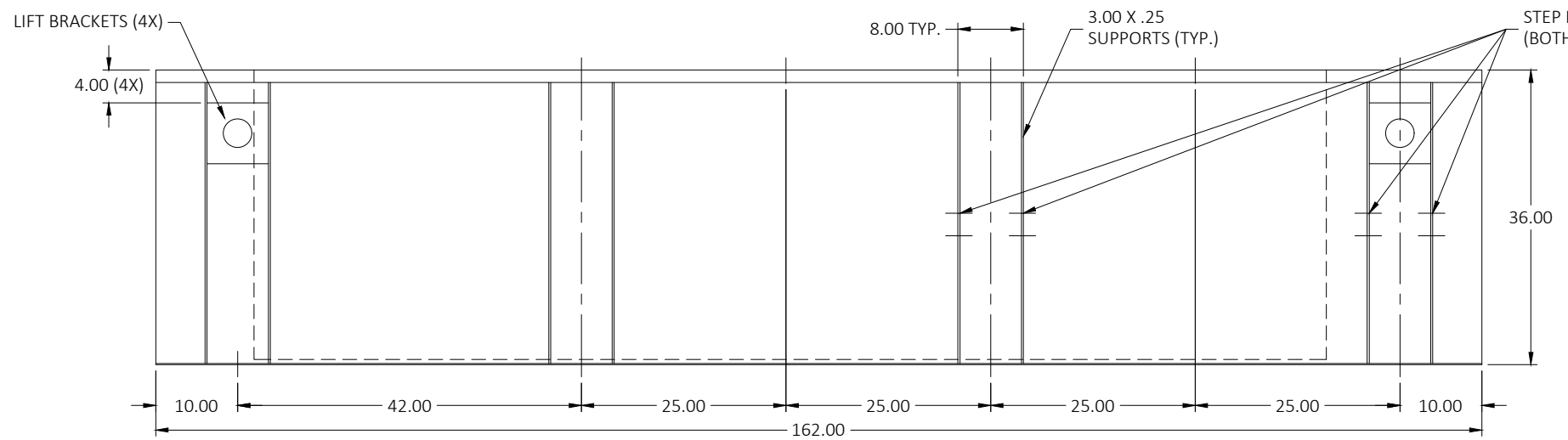
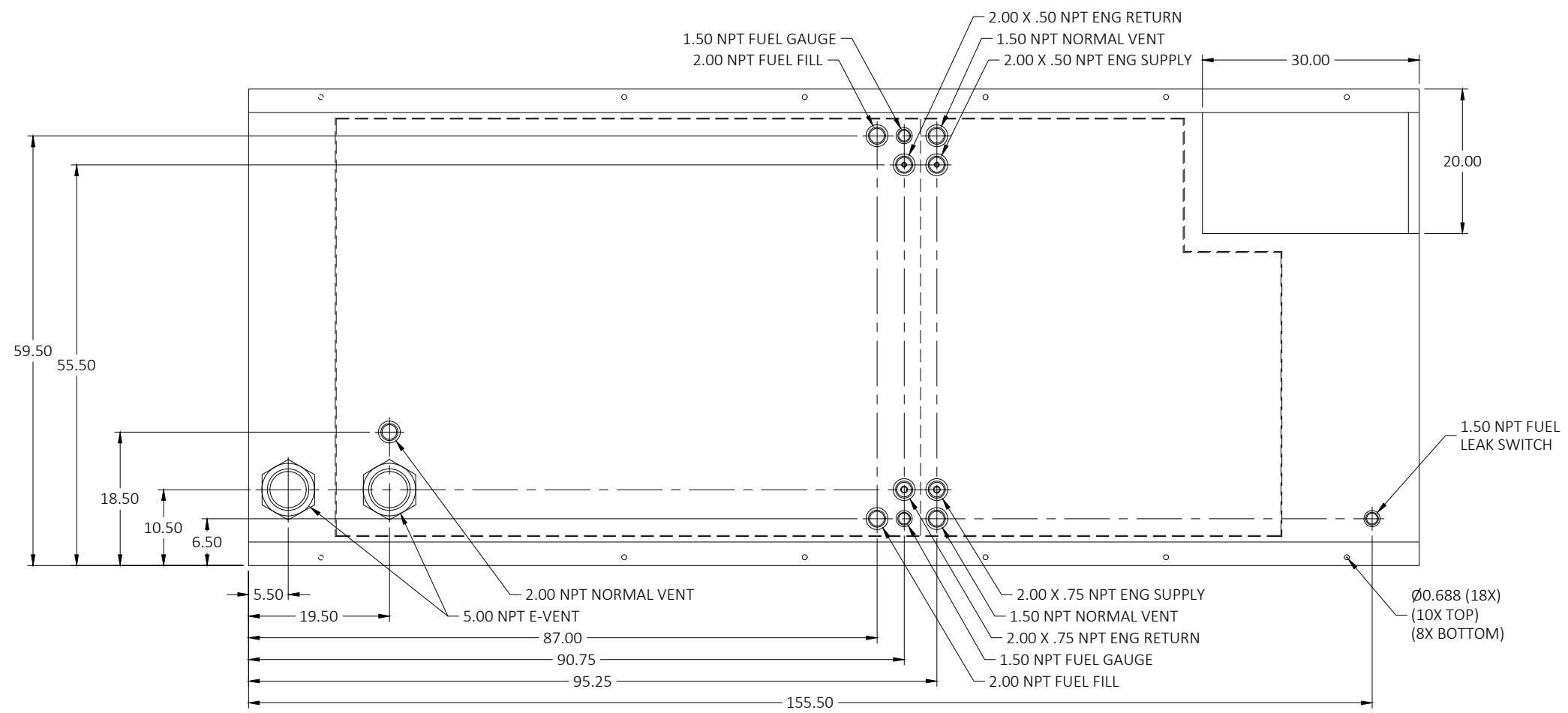
FINISH: BLACK HAMMERED

REMOVE ALL BURRS AND SHARP EDGES
 TOLERANCE UNLESS OTHER SPECIFIED:
 FRACTIONAL: ± 1/32
 ANGULAR: ± 1°
 X.X = ± .1
 X.XX = ± .03
 X.XXX = ± .010

R13	MOVED FITTING CLUSTER & E-VENTS	08-23-22	CRC
LEVEL:	DESCRIPTION:	DATE:	BY:
REVISIONS:			
THE INFORMATION CONTAINED IN THIS DRAWING IS THE SOLE PROPERTY OF BLUE STAR POWER SYSTEMS, INC. ANY REPRODUCTION, IN PART OR AS A WHOLE, WITHOUT THE WRITTEN PERMISSION IS PROHIBITED.			
2250 CARLSON DRIVE, NORTH MANKATO, MINNESOTA 56003 1 507 345 1776			
TANK SB 540GL DW SC UL/ULC W/ STUB-UP			
	NAME	DATE	SIZE PART NUMBER:
	CRC	12-07-22	B 19153
DO NOT SCALE DRAWING	APPROVED:	CRC	SCALE: NONE APPROX. WEIGHT: 1,850 LBS SHEET 1 OF 1

DRAWING: **18010**

48HR / 1,080GL FUEL TANK
 JD250-02, JD275-02, JD300-02
 PD250-01, PD300-01
 VD230-01, VD250-01, VD250-03,
 VD275-01, VD300-01
 VD250-02FT4, VD300-02FT4
 LV0 / LV1 / LV2 / LV3

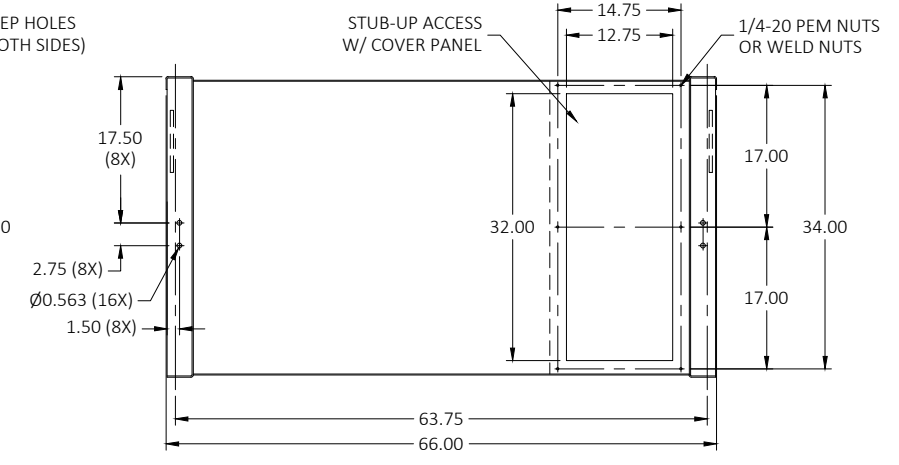
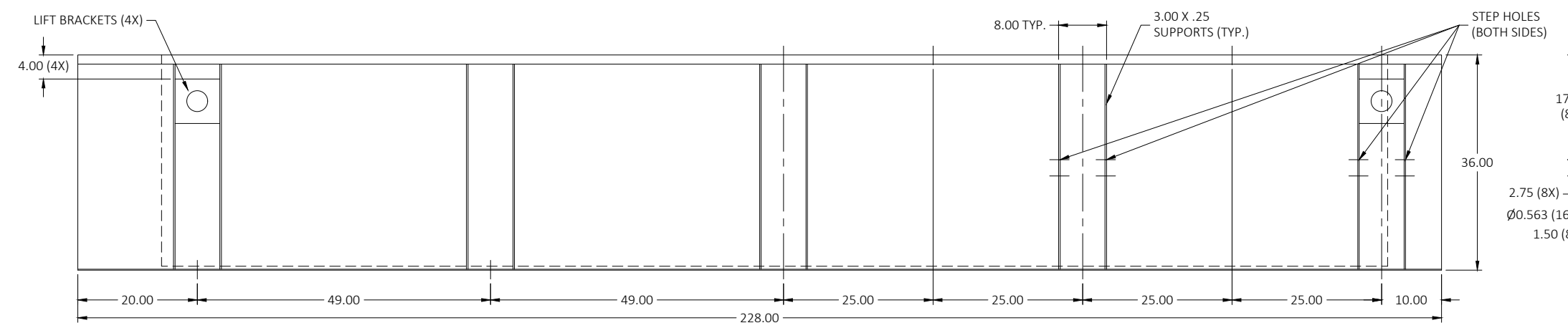
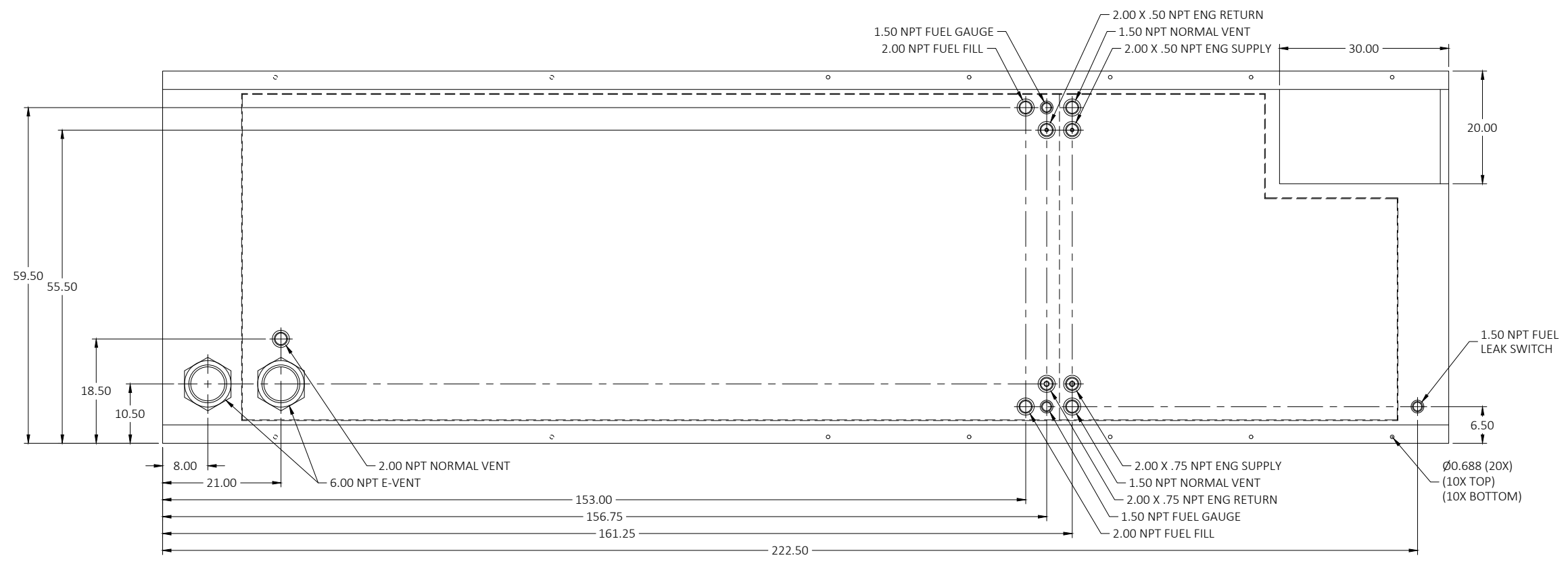


- NOTES:
1. MATERIAL: PER UL/ULC REQUIREMENTS
 2. SECONDARY CONTAINMENT TANK
 3. TANK TO INCLUDE:
 - FUEL SUPPLY/RETURN DIP TUBES
 - LIFTING/TIE-DOWN BRACKETS

MATERIAL: **SEE NOTES** FINISH: **BLACK HAMMERED**

R06	CHANGED E-VENTS TO 5.00 & ADDED STEP HOLES	02-11-22	CRC
LEVEL:	DESCRIPTION:	DATE:	BY:
REVISIONS:			
<small>THE INFORMATION CONTAINED IN THIS DRAWING IS THE SOLE PROPERTY OF BLUE STAR POWER SYSTEMS, INC. ANY REPRODUCTION, IN PART OR AS A WHOLE, WITHOUT THE WRITTEN PERMISSION IS PROHIBITED.</small>			
<h1 style="margin: 0;">BLUE STAR</h1> <h2 style="margin: 0;">Power Systems Inc.</h2> <small>2250 CARLSON DRIVE, NORTH MANKATO, MINNESOTA 56003 1 507 345 1776</small>			
TANK SB 1080GL DW SC UL/ULC W/ STUB-UP			
	NAME	DATE	SIZE PART NUMBER:
	DRAWN BY: CRC	12-07-22	B 18010
DO NOT SCALE DRAWING	APPROVED: CRC	12-07-22	SCALE: NONE APPROX. WEIGHT: 2,900 LBS SHEET 1 OF 1

72HR / 1,620GL FUEL TANK
 JD250-02, JD275-02, JD300-02
 PD250-01, PD300-01
 VD230-01, VD250-01, VD250-03,
 VD275-01, VD300-01
 VD250-02FT4, VD300-02FT4
 LV0 / LV1 / LV2 / LV3



- NOTES:
 1. MATERIAL: PER VENDOR'S UL/ULC REQUIREMENTS
 2. SECONDARY CONTAINMENT TANK
 3. TANK TO INCLUDE:
 -FUEL SUPPLY/RETURN DIP TUBES
 -LIFTING/TIE-DOWN BRACKETS

MATERIAL: SEE NOTES FINISH: BLACK HAMMERED

REMOVE ALL BURRS AND SHARP EDGES
 TOLERANCE UNLESS OTHER SPECIFIED:
 FRACTIONAL: ± 1/32
 ANGULAR: ± 1°
 X.X = ± .1
 X.XX = ± .03
 X.XXX = ± .010

R04	CHANGED LEFT SUPPLY/RETURN TO 2.00 X .75	04-01-21	CRC
LEVEL:	DESCRIPTION:	DATE:	BY:
REVISIONS:			
THE INFORMATION CONTAINED IN THIS DRAWING IS THE SOLE PROPERTY OF BLUE STAR POWER SYSTEMS, INC. ANY REPRODUCTION, IN PART OR AS A WHOLE, WITHOUT THE WRITTEN PERMISSION IS PROHIBITED.			
2250 CARLSON DRIVE, NORTH MANKATO, MINNESOTA 56003 1 507 345 1776			
TANK SB 1620GL DW SC UL/ULC W/ STUB-UP			
	NAME	DATE	SIZE
	CRC	12-07-22	B
	DATE	SCALE	PART NUMBER:
	12-07-22	NONE	20773
DO NOT SCALE DRAWING	APPROVED:	SCALE:	APPROX. WEIGHT:
	CRC	NONE	4,300 LBS
			SHEET 1 OF 1