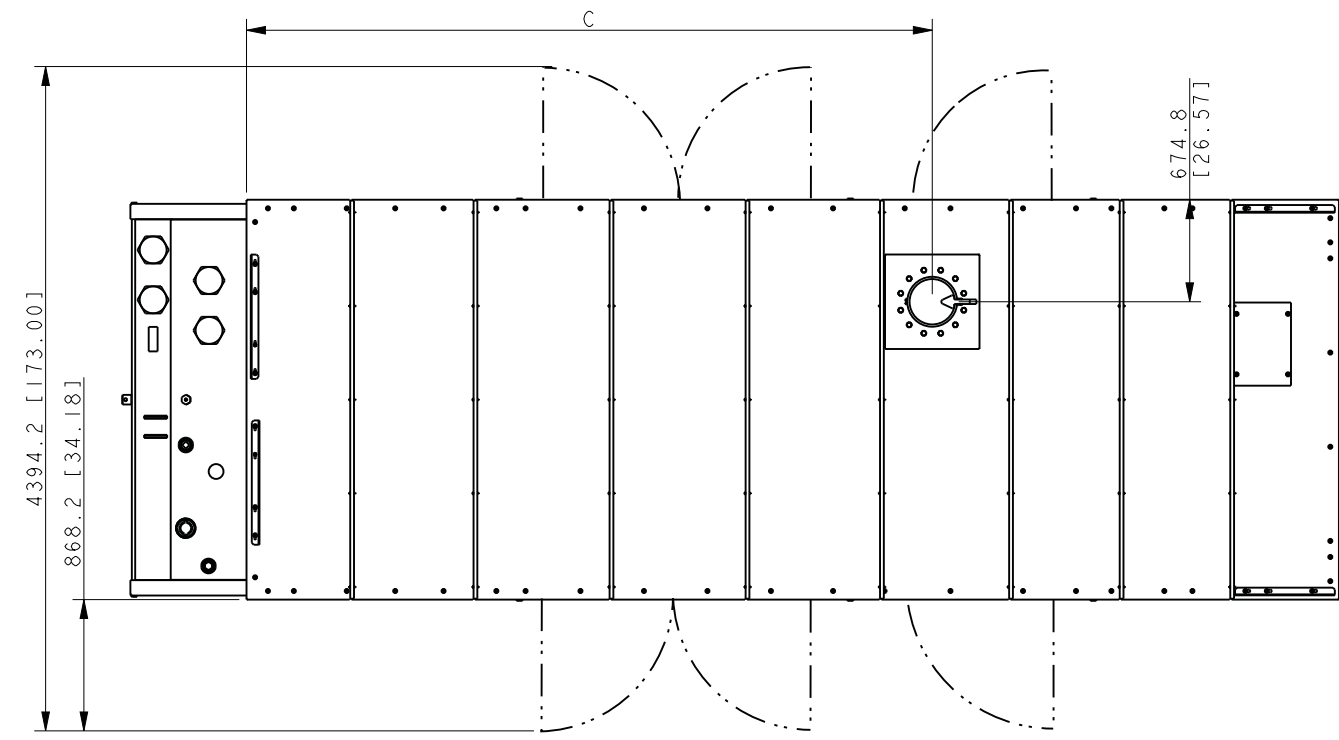
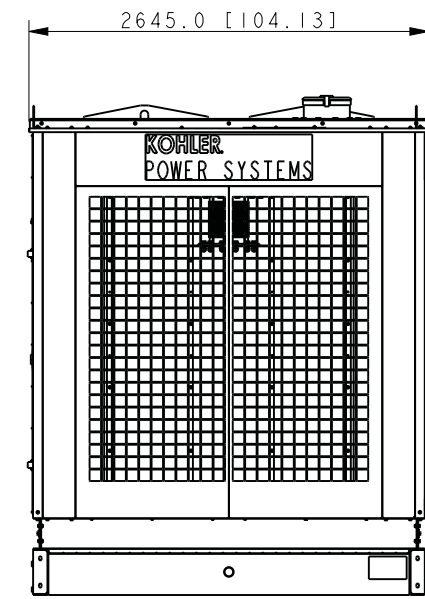
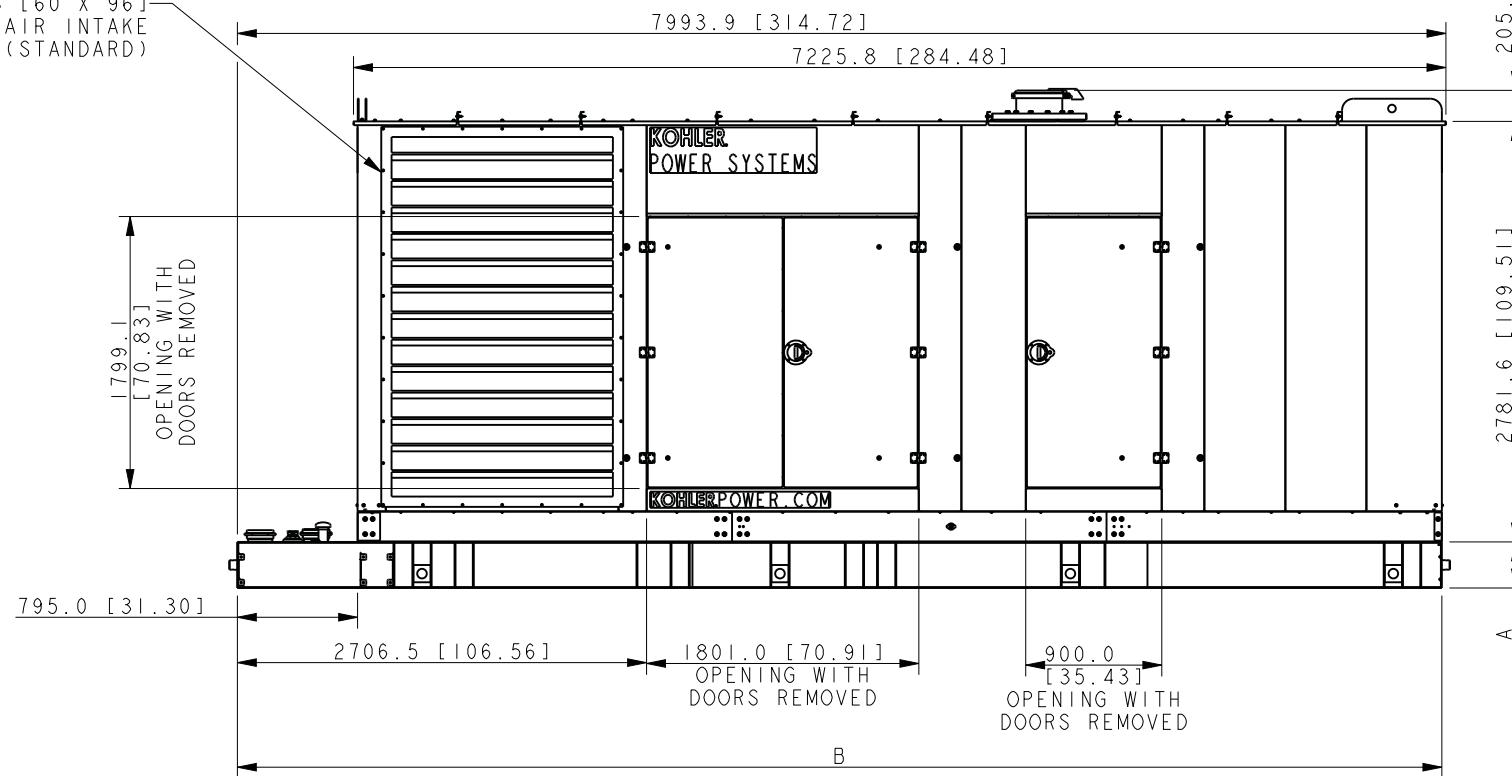
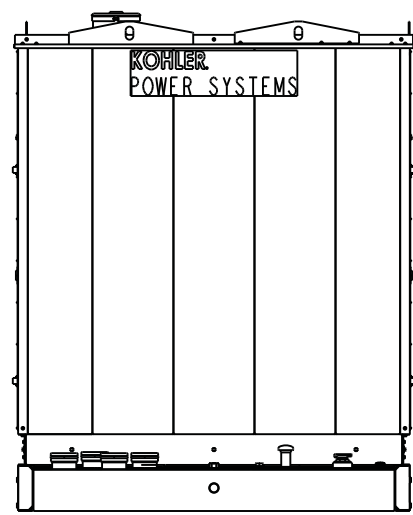


MODEL	DIM C MM [INCH]
700/800 REOZDE	4724.2 [186.0]
750/800 REOZMD	4574.5 [180.1]
900/1000 REOZDE /MD	4536.4 [178.6]



1524 X 2438 [60 X 96]  
FIXED AIR INTAKE  
LOUVER (STANDARD)



\*WEIGHT INCLUDES GENERATOR (WET), ENCLOSURE & SILENCER.  
NOTE: DIMENSIONS IN [ ] ARE ENGLISH EQUIVALENTS.

TANK INFORMATION				
LITERS [GALLONS] MIN HOURS	GENSETS	DIM A MM [INCH]	DIM B MM [INCH]	TANK WEIGHT KG [LBS] (NO FUEL)
LIFT BASE ONLY	700-1000REOZDE/700-1000REOZMD	254 [10.0]	7173 [282.4]	862 [1900]
3682 [973] 12 HOURS	700-1000REOZDE/700-1000REOZMD	304.8 [12.0]	7967 [313.6]	3512 [7743]
6679 [1791] 24 HOURS	700-1000REOZDE / 750-800REOZMD	508.0 [20.0]	7967 [313.6]	3938 [8681]
6679 [1791] 24 HOURS	900-1000REOZMD	508.0 [20.0]	7967 [313.6]	3938 [8681]
8215 [2170] 36 HOURS	900-1000REOZMD	609.6 [24.0]	7967 [313.6]	4139 [9125]
8215 [2170] 36 HOURS	700-800REOZDE	609.6 [24.0]	7967 [313.6]	4139 [9125]
10824 [2859] 36 HOURS	900-1000REOZDE / 750-1000REOZMD	914.4 [36.0]	7967 [313.6]	4500 [9920]
10824 [2859] 48 HOURS	700-800REOZDE	914.4 [36.0]	7967 [313.6]	4500 [9920]
13970 [3690] 48 HOURS	900-1000REOZDE / 750-1000REOZMD	914.4 [36.0]	7967 [313.6]	4832 [10653]
16193 [4278] 72 HOURS	700-800REOZDE	914.4 [36.0]	9567 [376.6]	5498 [12120]
20914 [5525] 72 HOURS	900-1000REOZDE / 750-1000REOZMD	914.6 [36.0]	11430 [450.0]	6322 [13938]

	700/800 REOZDE	900/1000 REOZDE	750/800 REOZMD	900/1000 REOZMD
STEEL WEATHER ENCLOSURE WEIGHT KG [LBS]	8818 [19440]	10342 [22800]	9281 [20460]	12501 [27560]
ALUM. WEATHER ENCLOSURE WEIGHT KG [LBS]	8636 [19040]	10160 [22400]	9099 [20060]	12320 [27160]

TANK/LIFT BASE WEIGHT  
+ENCLOSURE WEIGHT  
=TOTAL WEIGHT  
**700-1000 KW WEATHER ENCLOSURE  
WITH SUB BASE TANK  
OR LIFTING BASE OPTION**

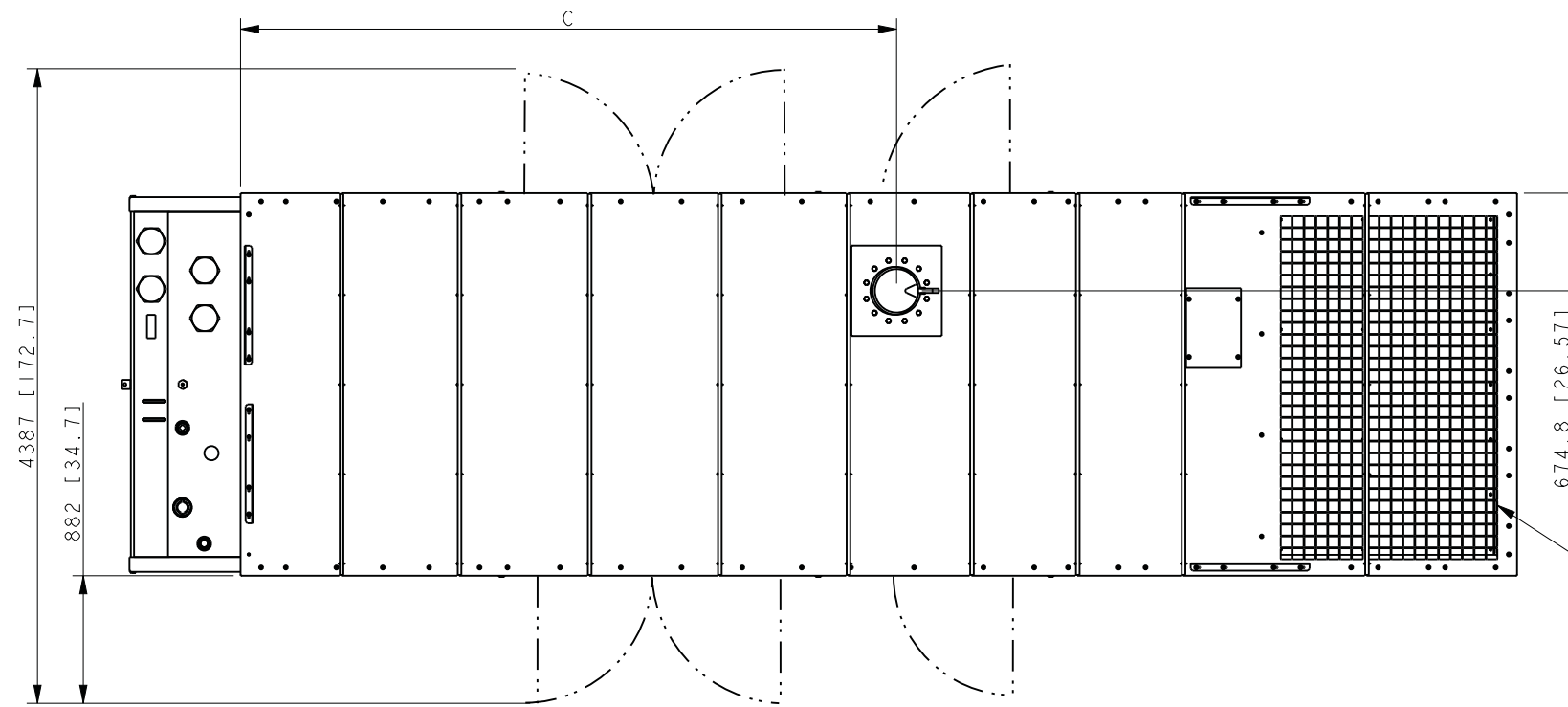
REV	DATE	ON COMPOSITE DWGS. SEE PART NO. FOR REVISION LEVEL	BY
E	03-19-14	SEE SHEET 4 [CT75098]	SSH
F	6-24-14	SEE SHEET 6 FOR CHANGE [CT85282]	JMR
G	10-09-14	SEE SHEET 6 FOR CHANGE [CT92730]	JMR
H	12-11-14	SEE SHEET 3 [CT100596]	PRM
J	4-21-15	(A-8) 700-1000REOZMD ADDED (C, D-5) DOOR LOCATION CORRECTED, SEE SHEETS 2 & 3 [CT111226]	SAM
K	7-22-15	SEE SHEET 4 [CT119088]	SAK
L	10-27-15	SEE SHEETS 2 AND 3 OF 6. (D-6) VIEW OF E-VENTS UPDATED. [CT128608]	GFR

**KOHLER CO.** METRIC PRO-E  
POWER SYSTEMS, KOHLER, WI 53044 U.S.A.  
THIS DRAWING IN DESIGN AND DETAIL IS KOHLER CO. PROPERTY AND MUST NOT BE USED EXCEPT IN CONNECTION WITH KOHLER CO. WORK. ALL RIGHTS OF DESIGN OR INVENTION ARE RESERVED.

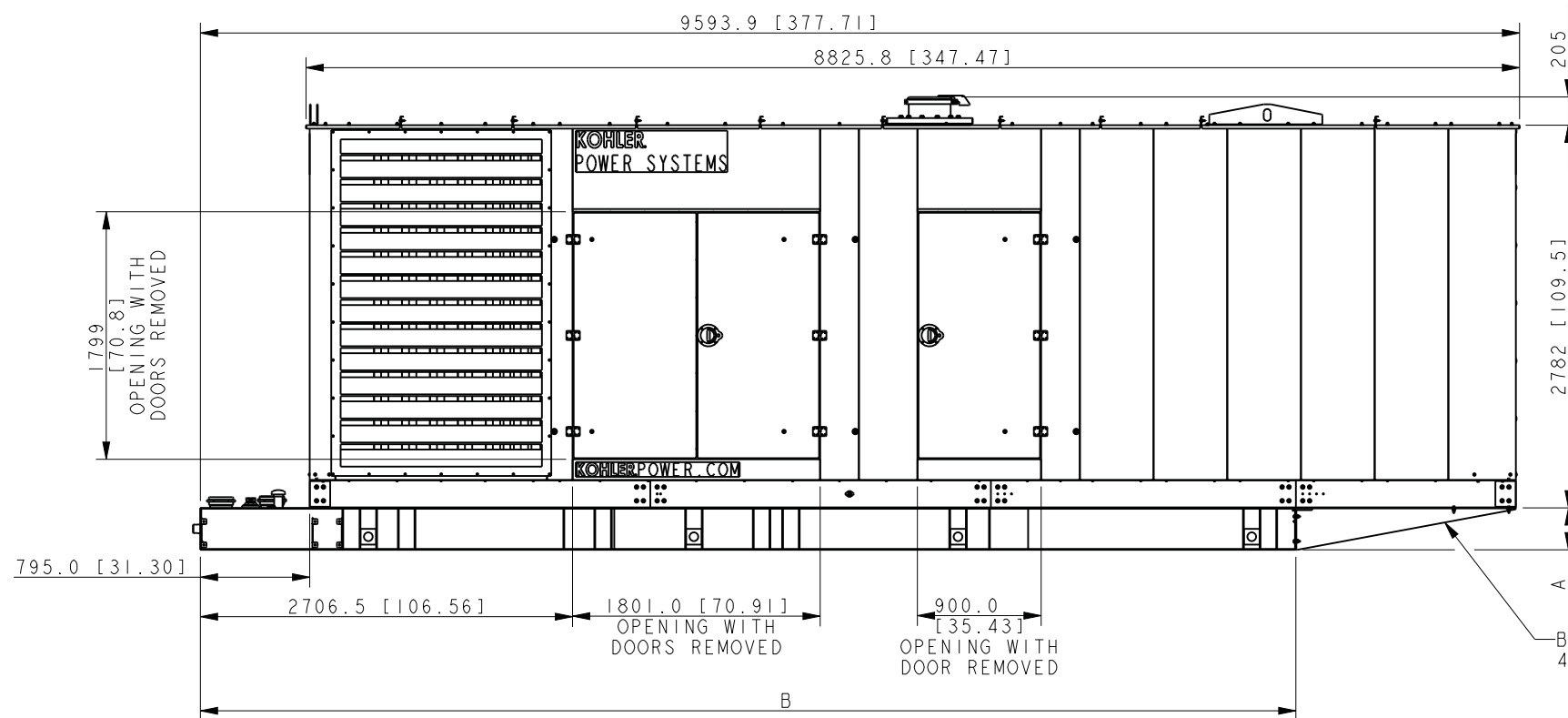
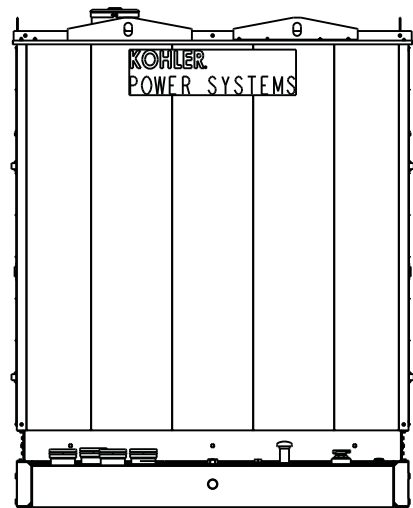
TITLE: **DIMENSION PRINT**

SCALE: 0.04 CAD NO. SHEET 1 of 6  
DWG NO. **ADV-8249** D

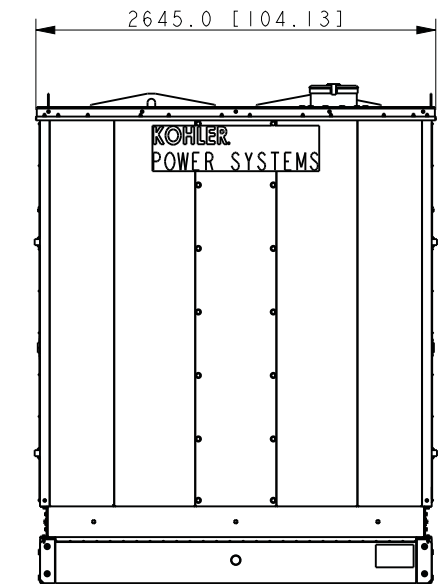
MODEL	DIM C MM [INCH]
700/800 REOZDE	4724.2 [186.0]
750/800 REOZMD	4574.5 [180.1]
900/1000 REOZDE /MD	4536.4 [178.6]



PUNCHED RADIATOR DISCHARGE OPENING (TOP)



BUTTRESS KIT NOT USED ON 4278 AND 5525 GAL. TANKS



\*WEIGHT INCLUDES GENERATOR (WET), ENCLOSURE & SILENCER.  
NOTE: DIMENSIONS IN [ ] ARE ENGLISH EQUIVALENTS.

TANK INFORMATION				
LITERS [GALLONS] MIN HOURS	GENSETS	DIM A MM [INCH]	DIM B MM [INCH]	TANK WEIGHT KG [LBS] (NO FUEL)
LIFT BASE ONLY	700-1000REOZDE / MD	254 [10.0]	8773 [345.4]	934 [2060]
3682 [973] 12 HOURS	700-1000REOZDE / MD	304.8 [12.0]	7967 [313.6]	3512 [7743]
6679 [1791] 24 HOURS	700-1000REOZDE / 750-800REOZMD	508.0 [20.0]	7967 [313.6]	3938 [8681]
8215 [2170] 24 HOURS	900-1000REOZMD	609.6 [24.0]	7967 [313.6]	4139 [9125]
8215 [2170] 36 HOURS	700-800REOZDE	609.6 [24.0]	7967 [313.6]	4139 [9125]
10824 [2859] 36 HOURS	900-1000REOZDE / 750-1000REOZMD	914.4 [36.0]	7967 [313.6]	4500 [9920]
10824 [2859] 48 HOURS	700-800REOZDE	914.4 [36.0]	7967 [313.6]	4500 [9920]
13970 [3690] 48 HOURS	900-1000REOZDE / 750-1000REOZMD	914.4 [36.0]	7967 [313.6]	4832 [10653]
16193 [4278] 72 HOURS	700-800REOZDE	914.4 [36.0]	9567 [376.6]	5498 [12120]
20914 [5525] 72 HOURS	900-1000REOZDE / 750-1000REOZMD	914.6 [36.0]	11430 [450.0]	6322 [13938]

	700/800 REOZDE	900/1000 REOZDE	750/800 REOZMD	900/1000 REOZMD
STEEL SOUND ENCLOSURE WEIGHT KG [LBS]	8981 [19800]	10523 [23200]	9435 [20800]	12655 [27900]
ALUM. SOUND ENCLOSURE WEIGHT KG [LBS]	8754 [19300]	10297 [22700]	9208 [20300]	12428 [27400]

TANK/LIFT BASE WEIGHT  
+ENCLOSURE WEIGHT  
=TOTAL WEIGHT

700-1000 KW SOUND ENCLOSURE  
WITH SUB BASE TANK  
OR LIFTING BASE OPTION

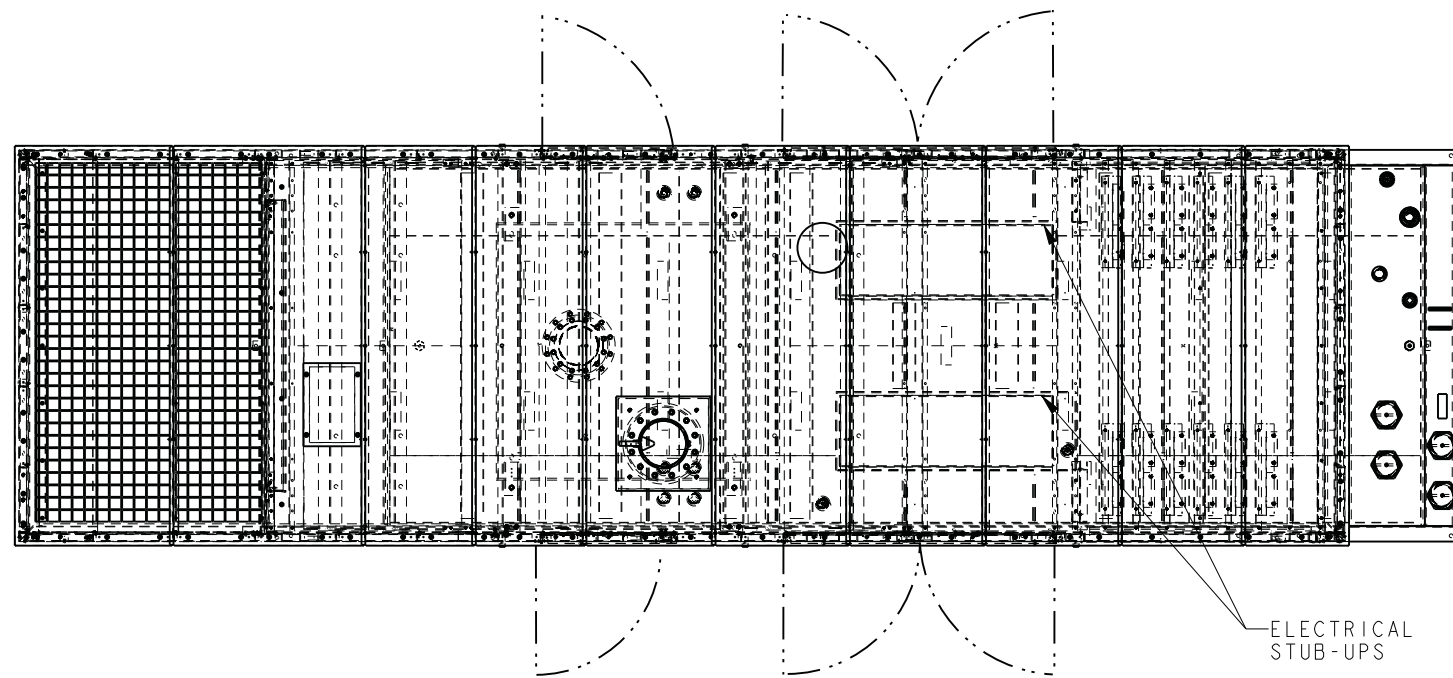
REV	DATE	ON COMPOSITE DWGS. SEE PART NO. FOR REVISION LEVEL	BY
E	03-19-14	SEE SHEET 4 [CT75098]	SSH
F	6-24-14	SEE SHEET 6 FOR CHANGE [CT85282]	JMR
G	10-09-14	SEE SHEET 6 FOR CHANGE [CT92730]	JMR
H	12-11-14	SEE SHEET 3 [CT100596]	PRM
J	4-21-15	(C, D-5) DOOR LOCATION CORRECTED, SEE SHEETS 1 & 3 [CT111226]	SAM
K	7-22-15	SEE SHEET 4 [CT119088]	SAK
L	10-27-15	SEE SHEETS 1 AND 3 OF 6. (D-6) VIEW OF E-VENTS UPDATED. [CT128608]	GFR

**KOHLER CO.** METRIC PRO-E  
POWER SYSTEMS, KOHLER, WI 53044 U.S.A.  
THIS DRAWING IN DESIGN AND DETAIL IS KOHLER CO. PROPERTY AND MUST NOT BE USED EXCEPT IN CONNECTION WITH KOHLER CO. WORK. ALL RIGHTS OF DESIGN OR INVENTION ARE RESERVED.

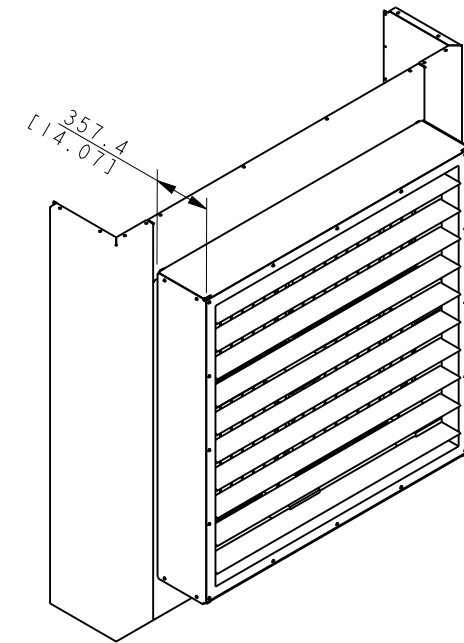
TITLE: **DIMENSION PRINT**

SCALE: 0.04 CAD NO. SHEET 2 of 6  
DWG NO. **ADV-8249**

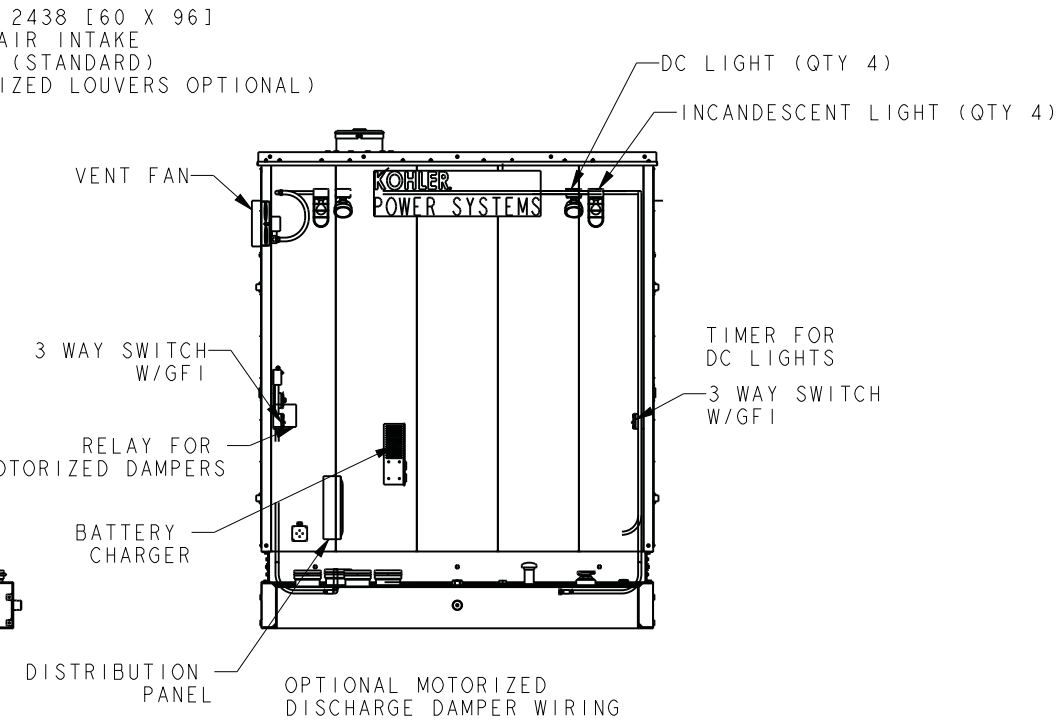
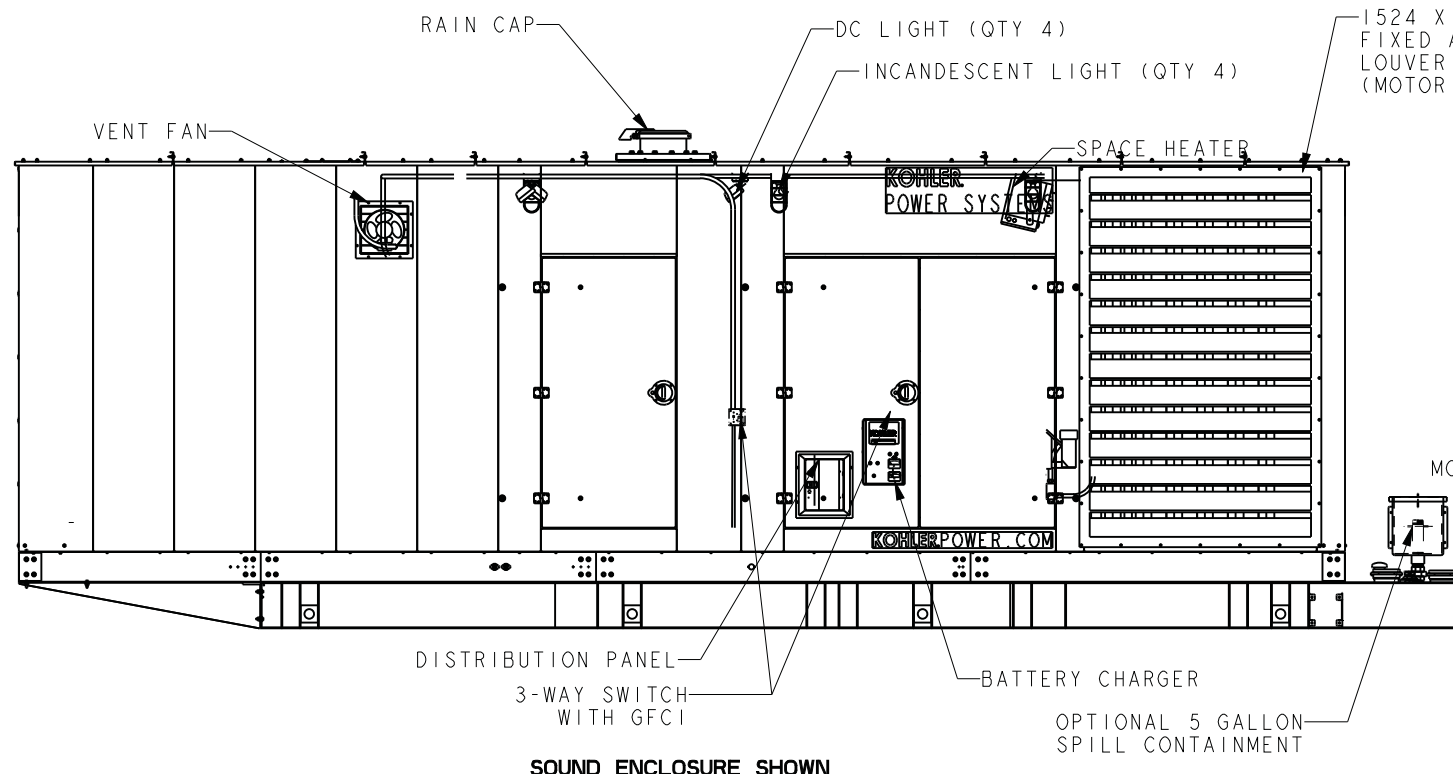
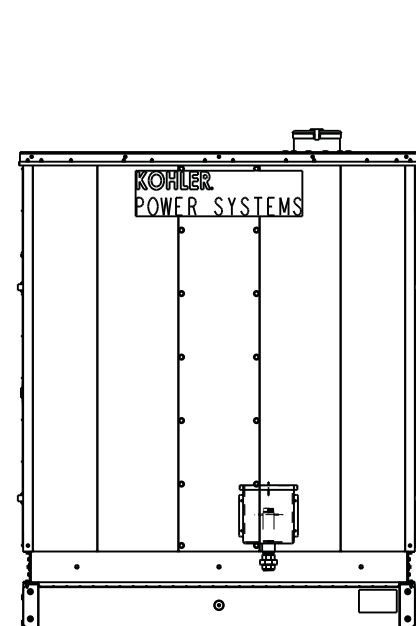
8 7 6 5 4 3 2 1



OPTIONAL MOTORIZED OR GRAVITY DISCHARGE DAMPER (SHOWN ON WEATHER ENCLOSURE)



SCALE 0.05



NOTE: DIMENSIONS IN [ ] ARE ENGLISH EQUIVALENTS.

**ELECTRICAL & ENCLOSURE ACCESSORY OPTIONS**

REV	DATE	ON COMPOSITE DWGS. SEE PART NO. FOR REVISION LEVEL	BY	UNLESS OTHERWISE SPECIFIED - 1) DIMENSIONS ARE IN MILLIMETERS 2) TOLERANCES ARE:
F	6-24-14	SEE SHEET 6 FOR CHANGE [CT85282]	JMR	X.XX ± 0.25
G	10-09-14	SEE SHEET 6 FOR CHANGE [CT92730]	JMR	X.X ± 1.0
H	12-11-14	(B-5) SIDE VIEW UPDATED FOR BETTER VISIBILITY OF ELECTRICAL ACCESSORIES [CT100596]	PRM	X ± 1.5
J	4-21-15	(C, D-5) DOOR LOCATION CORRECTED, SEE SHEETS 2 & 3 [CT111226]	SAM	ANGLES ± 0° 30'
K	7-22-15	SEE SHEET 4 [CT119088]	SAK	THIRD ANGLE PROJECTION
L	10-27-15	SEE SHEETS 1 AND 2 OF 6. (C-3) VIEW OF E-VENTS UPDATED. [CT128608]	GFR	APPROVALS

**KOHLER CO. METRIC PRO-E**

POWER SYSTEMS, KOHLER, WI 53044 U.S.A.

THIS DRAWING IN DESIGN AND DETAIL IS KOHLER CO. PROPERTY AND MUST NOT BE USED EXCEPT IN CONNECTION WITH KOHLER CO. WORK. ALL RIGHTS OF DESIGN OR INVENTION ARE RESERVED.

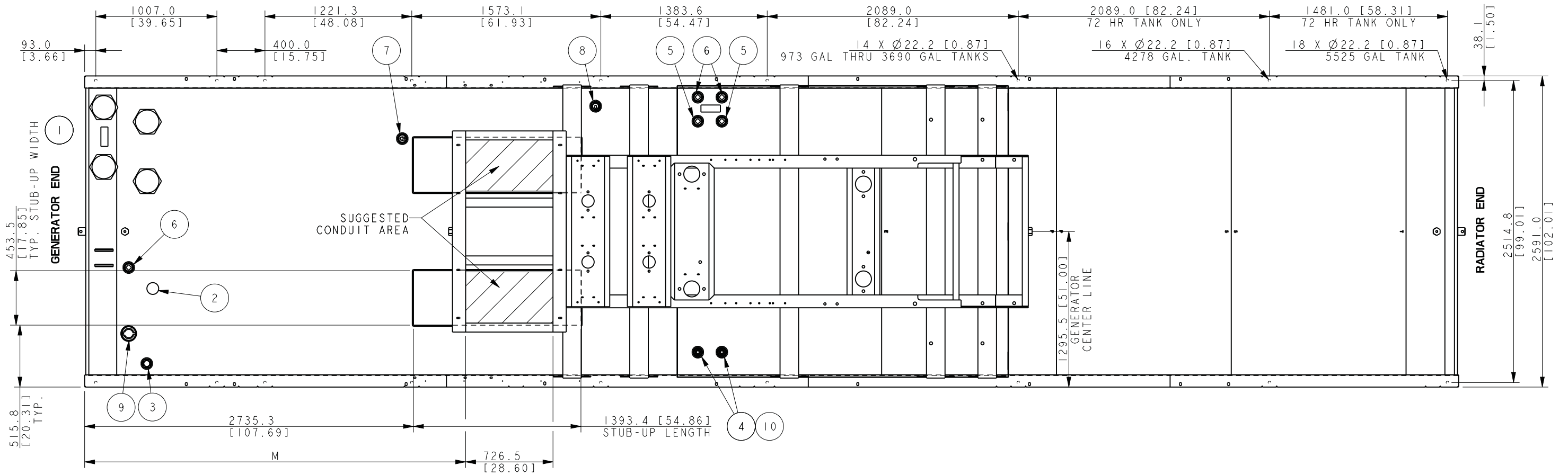
TITLE: **DIMENSION PRINT**

SCALE 0.04 CAD NO. SHEET 3 of 6

DWG NO. **ADV-8249**

D

**MOUNTING HOLE LOCATIONS  
5525 GAL. 72 HR TANK SHOWN**



CONDUIT LOCATION	700 / 800 REOZDE		900 / 1000 REOZDE			750 / 800 REOZMD			900 / 1000 REOZMD			
	5M4032, 4034, 4164, 4276	5M4036, 4038, 4166, 4278	5M4044	5M4036, 4038, 4168, 4280	7M4046	7M4170, 4282, 4284	5M4036, 5M4038, 5M4166, 5M4168, 5M4278, 5M4280	5M4276, 5M4032, 5M4034	5M4036, 5M4038, 5M4168, 5M4280	7M4170, 7M4282, 7M4284	5M4044	7M4046
"M"	3387.6 [133.37]	3210.4 [126.39]	2811.1 [110.67]	2870.3 [113.0]	2772.4 [109.15]	2963.8 [116.8]	3169.5 [124.78]	2991.5 [117.78]	2908.5 [114.5]	2988.6 [117.66]	2853.5 [112.34]	2798.5 [110.18]

ITEM	DESCRIPTION
10	CHECK VALVE W/CLOSE NIPPLE (1"NPT)
9	FILL CAP, 2" LOCKABLE
8	FUEL LEVEL SENDING UNIT
7	SWITCH ASSY FUEL IN BASIN TOP MTD.
6	2" NPT OPTIONAL FUEL LEVEL SWITCHES
5	2"NPT FITTING, ALT DIP TUBE LOCATION
4	DIP TUBE ASSY (1"NPT)
3	GAUGE, FUEL LEVEL, MECHANICAL
2	VENT, NORMAL 2" W/ RISER
1	CAP, VENT, EMERGENCY

STANDARD TANK

REV	DATE	ON COMPOSITE DWGS. SEE PART NO. FOR REVISION LEVEL	BY
E	03-19-14	(B-3) 117.78 WAS 177.78 [CT75098]	SSH
F	6-24-14	SEE SHEET 6 FOR CHANGE [CT85282]	JMR
G	10-09-14	SEE SHEET 6 FOR CHANGE [CT92730]	JMR
H	12-11-14	SEE SHEET 3 [CT100596]	PRM
J	4-21-15	SEE SHEETS 1, 2 AND 3 [CT111226]	SAM
K	7-22-15	(D-2, -3, -4) 18X Ø22.2 [0.87] WAS Ø25.0 [0.98], 16X Ø22.2 [0.87] WAS Ø25.0 [0.98] & 14X Ø22.2 [0.87] WAS Ø25.0 [0.98] [CT119088]	SAK
L	10-27-15	SEE SHEETS 1, 2 AND 3 OF 6. [CT128608]	GFR

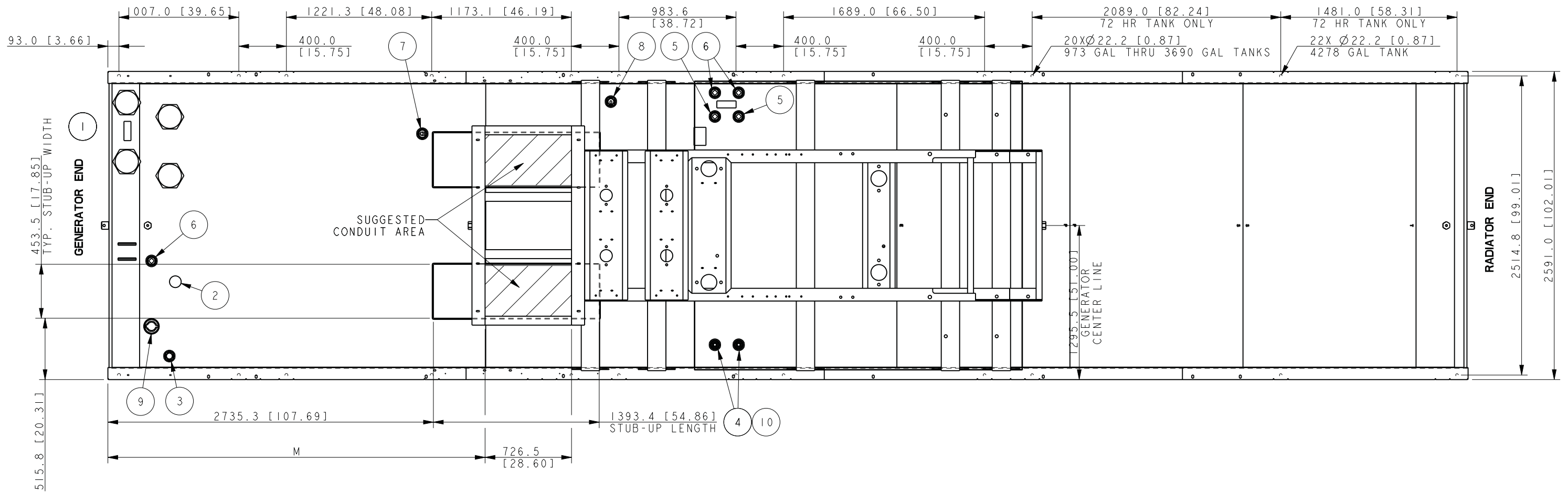
**KOHLER CO. METRIC PRO-E**  
POWER SYSTEMS, KOHLER, WI 53044 U.S.A.  
THIS DRAWING IN DESIGN AND DETAIL IS KOHLER CO. PROPERTY AND MUST NOT BE USED EXCEPT IN CONNECTION WITH KOHLER CO. WORK. ALL RIGHTS OF DESIGN OR INVENTION ARE RESERVED.

**TITLE**  
**DIMENSION PRINT**

SCALE 0.04 CAD NO. SHEET 4 of 6  
DWG NO. **ADV-8249**

APPROVALS  
DATE  
DRAWN JMR 6-28-11  
CHECKED AJD 6-28-11  
APPROVED AJD 6-28-11

MOUNTING HOLE LOCATIONS SEISMIC (IBC) RATED TANKS  
5525 GAL. 72 HR (IBC) RATED TANK SHOWN



CONDUIT LOCATION	700 / 800 REOZDE		900 / 1000 REOZDE			750 / 800 REOZMD			900 / 1000 REOZMD			
	5M4032, 4034, 4164, 4276	5M4036, 4038, 4166, 4278	5M4044	5M4036, 4038, 4168, 4280	7M4046	7M4170, 4282, 4284	5M4036, 5M4038, 5M4166, 5M4168, 5M4278, 5M4280	5M4276, 5M4032, 5M4034	5M4036, 5M4038, 5M4168, 5M4280	7M4170, 7M4282, 7M4284	5M4044	7M4046
"M"	3387.6 [133.37]	3210.4 [126.39]	2811.1 [110.67]	2870.3 [113.0]	2772.4 [113.1]	2963.8 [116.8]	3169.5 [124.78]	2991.5 [117.78]	2908.5 [114.5]	2988.6 [117.66]	2853.5 [112.34]	2798.5 [110.18]

ITEM	DESCRIPTION
10	CHECK VALVE W/CLOSE NIPPLE (1"NPT)
9	FILL CAP, 2" LOCKABLE
8	FUEL LEVEL SENDING UNIT
7	SWITCH ASSY FUEL IN BASIN TOP MTD.
6	2" NPT OPTIONAL FUEL LEVEL SWITCHES
5	2"NPT FITTING, ALT DIP TUBE LOCATION
4	DIP TUBE ASSY (1"NPT)
3	GAUGE, FUEL LEVEL, MECHANICAL
2	VENT, NORMAL 2" W/ RISER
1	CAP, VENT, EMERGENCY

IBC RATED TANK

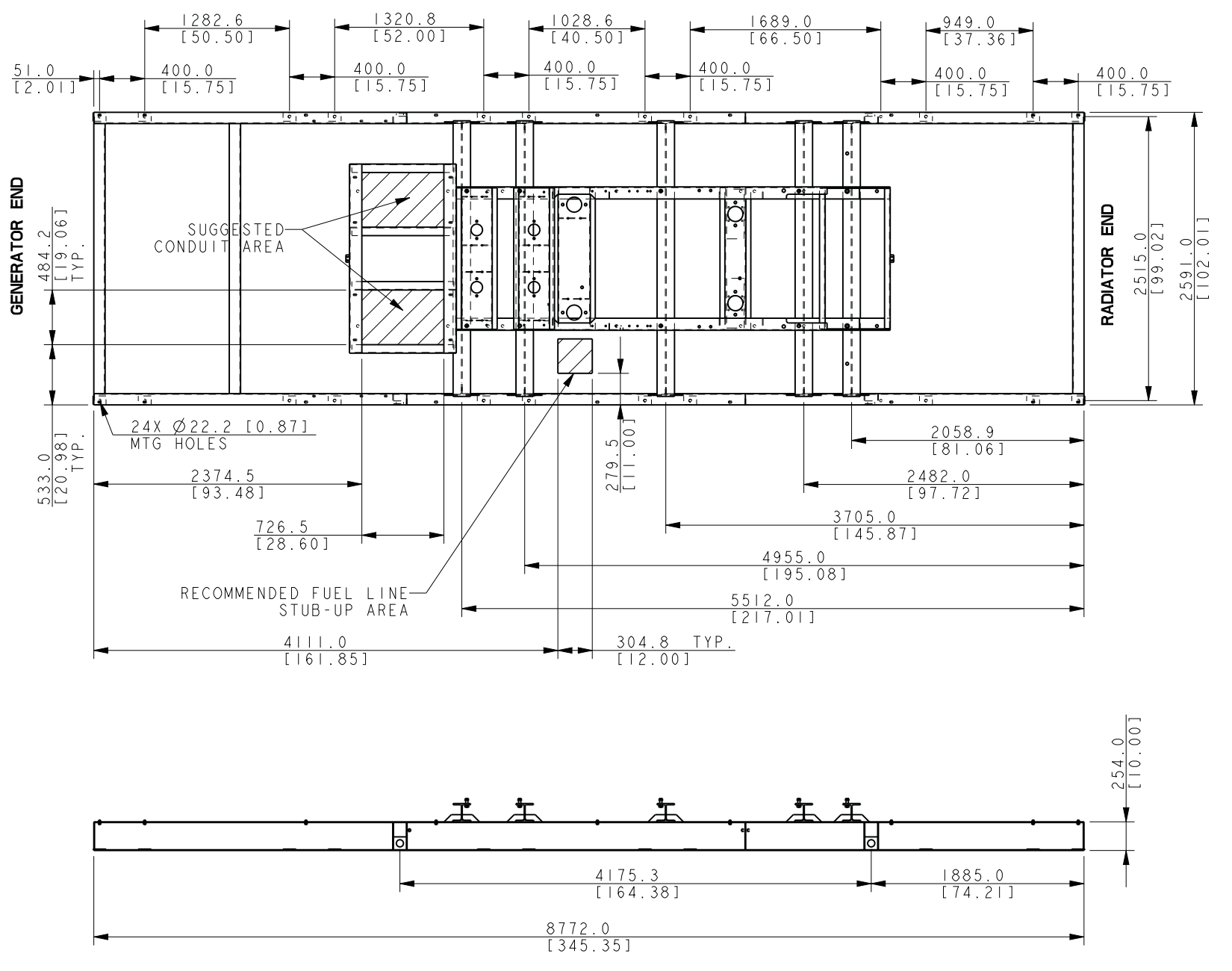
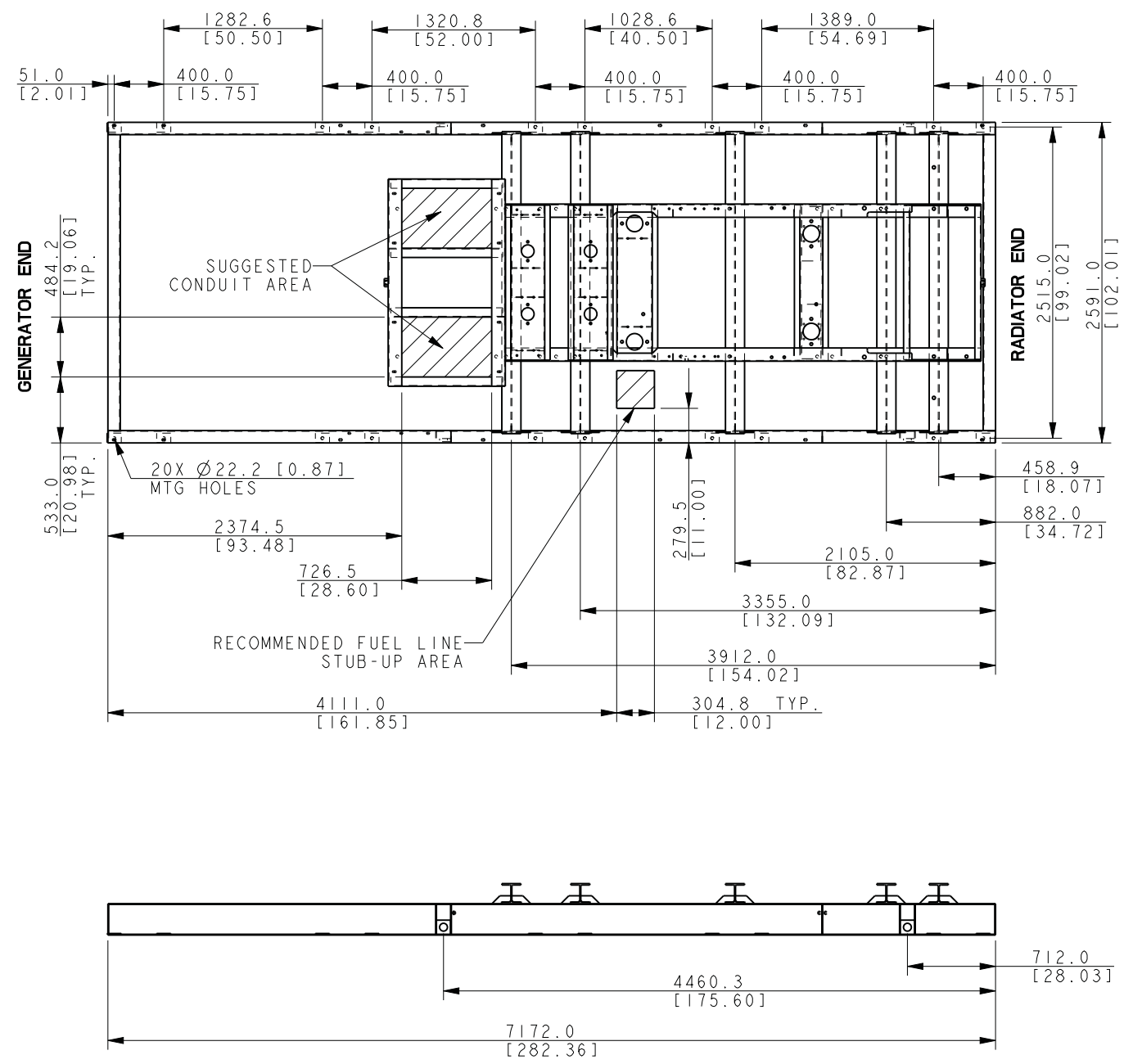
REV	DATE	ON COMPOSITE DWGS. SEE PART NO. FOR REVISION LEVEL	BY
C	3-29-12	SEE SHEET 4 [CT09114]	SAM
D	01-24-14	(B-4) COLUMNS 750/800 & 900/1000 REOZMD ADDED [CT70144]	KMP
E	03-19-14	SEE SHEET 4 [CT75098]	SSH
F	6-24-14	SEE SHEET 6 FOR CHANGE [CT85282]	JMR
G	10-09-14	SEE SHEET 6 FOR CHANGE. [CT92730]	JMR
H	12-11-14	SEE SHEET 3 [CT100596]	PRM
J	4-21-15	SEE SHEETS 1, 2 AND 3 [CT111226]	SAM
K	7-22-15	SEE SHEET 4 [CT119088]	SAK
L	10-27-15	SEE SHEETS 1, 2 AND 3 OF 6. [CT128608]	GFR

UNLESS OTHERWISE SPECIFIED -  
1) DIMENSIONS ARE IN MILLIMETERS  
2) TOLERANCES ARE:  
X.XX ± 0.25  
X.X ± 1.0  
X ± 1.5  
ANGLES ± 0° 30' MAX.

**KOHLER CO.** METRIC PRO-E  
POWER SYSTEMS, KOHLER, WI 53044 U.S.A.  
THIS DRAWING IN DESIGN AND DETAIL IS KOHLER CO. PROPERTY AND MUST NOT BE USED EXCEPT IN CONNECTION WITH KOHLER CO. WORK. ALL RIGHTS OF DESIGN OR INVENTION ARE RESERVED.

TITLE: **DIMENSION PRINT**

SCALE: 0.40 CAD NO. SHEET 5 of 6  
DWG NO. **ADV-8249**



LIFTING BASE FOR  
SOUND ENCLOSURES

REV	DATE	ON COMPOSITE DWGS. SEE PART NO. FOR REVISION LEVEL	BY	UNLESS OTHERWISE SPECIFIED - 1) DIMENSIONS ARE IN MILLIMETERS 2) TOLERANCES ARE:	APPROVALS	DATE
F	6-24-14	LIFTING BASE VIEWS REDRAWN TO SHOW SUGGESTED CONDUIT AREAS. [CT85282]	JMR	X.XX ± 0.25 X.X ± 1.0 X ± 1.5		6-28-11
G	10-09-14	ADDED RECOMMENDED FUEL LINE STUB UP AREA TO LIFTING BASE DWG VIEWS. [CT92730]	JMR	ANGLES ± 0° 30° MAX.		6-28-11
H	12-11-14	SEE SHEET 3 [CT100596]	PRM	THIRD ANGLE PROJECTION		
J	4-21-15	SEE SHEETS 1, 2 AND 3 [CT111226]	SAM			
K	7-22-15	SEE SHEET 4 [CT119088]	SAK			
L	10-27-15	SEE SHEETS 1, 2 AND 3 OF 6. [CT128608]	GFR			

**KOHLER CO. METRIC PRO-E**  
POWER SYSTEMS, KOHLER, WI 53044 U.S.A.  
THIS DRAWING IN DESIGN AND DETAIL IS KOHLER CO. PROPERTY AND MUST NOT BE USED EXCEPT IN CONNECTION WITH KOHLER CO. WORK. ALL RIGHTS OF DESIGN OR INVENTION ARE RESERVED.

TITLE: **DIMENSION PRINT**

SCALE: 0.04 CAD NO. SHEET 6 of 6  
DWG NO. **ADV-8249**