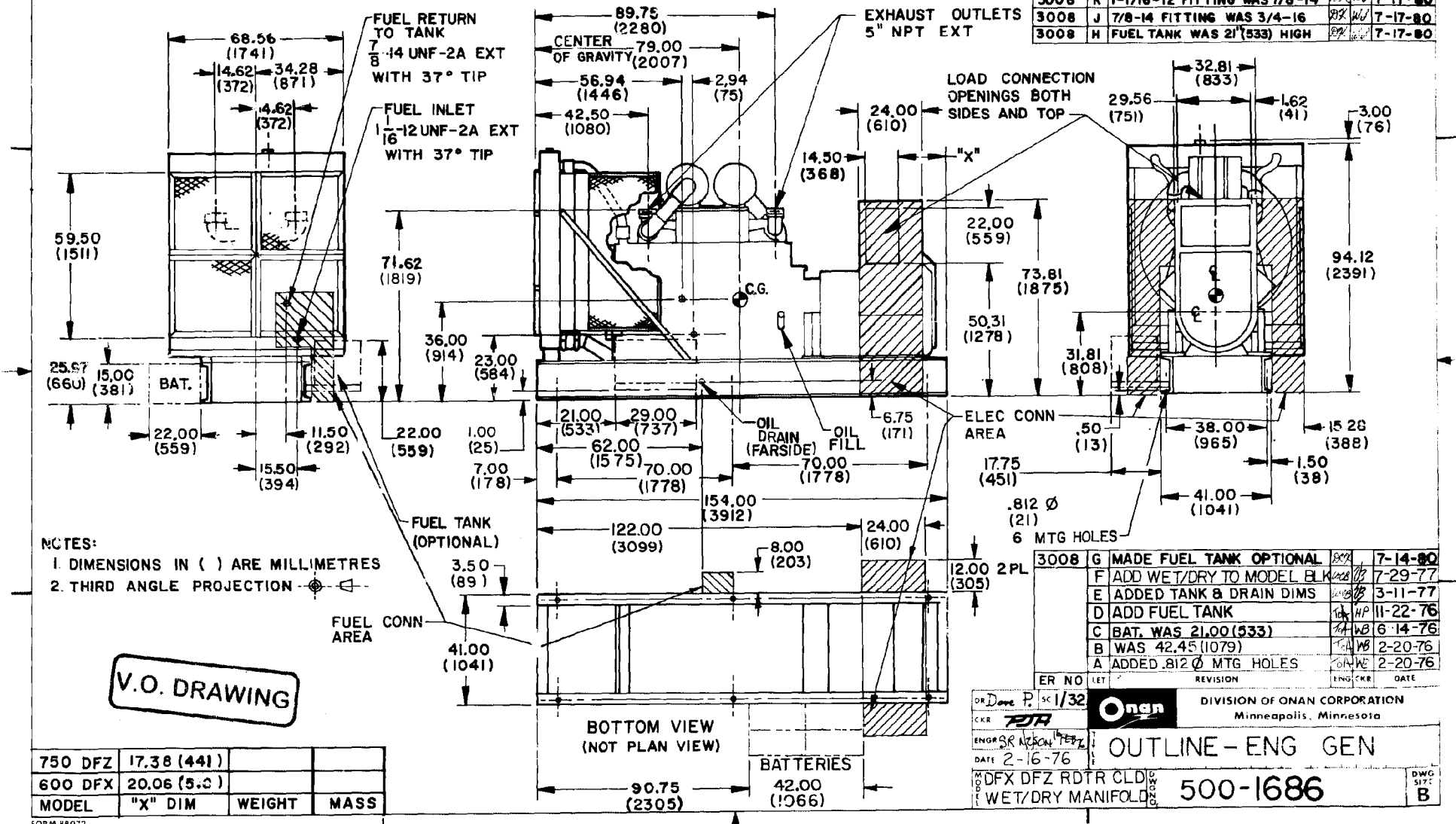


MICROFILMED
300-1686

4790	L	ADD C.G. & CONN AREAS	1/28/77	2-23-81
3008	K	1-1/16-12 FITTING WAS 7/8-14	2/28/77	7-17-80
3008	J	7/8-14 FITTING WAS 3/4-16	2/28/77	7-17-80
3008	H	FUEL TANK WAS 21" (533) HIGH	2/28/77	7-17-80



NOTES:
1. DIMENSIONS IN () ARE MILLIMETRES
2. THIRD ANGLE PROJECTION

V.O. DRAWING

750 DFZ	17.38 (441)		
600 DFX	20.06 (513)		
MODEL	"X" DIM	WEIGHT	MASS

3008	G	MADE FUEL TANK OPTIONAL	2/28/77	7-14-80
	F	ADD WET/DRY TO MODEL BLK	2/28/77	7-29-77
	E	ADDED TANK & DRAIN DIMS	2/28/77	3-11-77
	D	ADD FUEL TANK	1/18/77	11-22-76
	C	BAT. WAS 21.00 (533)	1/18/77	6-14-76
	B	WAS 42.45 (1079)	1/18/77	2-20-76
	A	ADDED .812 Ø MTG HOLES	2/20/76	2-20-76

DR Done P. 1/32
 CKR **Onan** DIVISION OF ONAN CORPORATION
 Minneapolis, Minnesota
 ENGR SR W/CON TELZ
 DATE 2-16-76
 OUTLINE - ENG GEN
 500-1686
 DWG 517 B