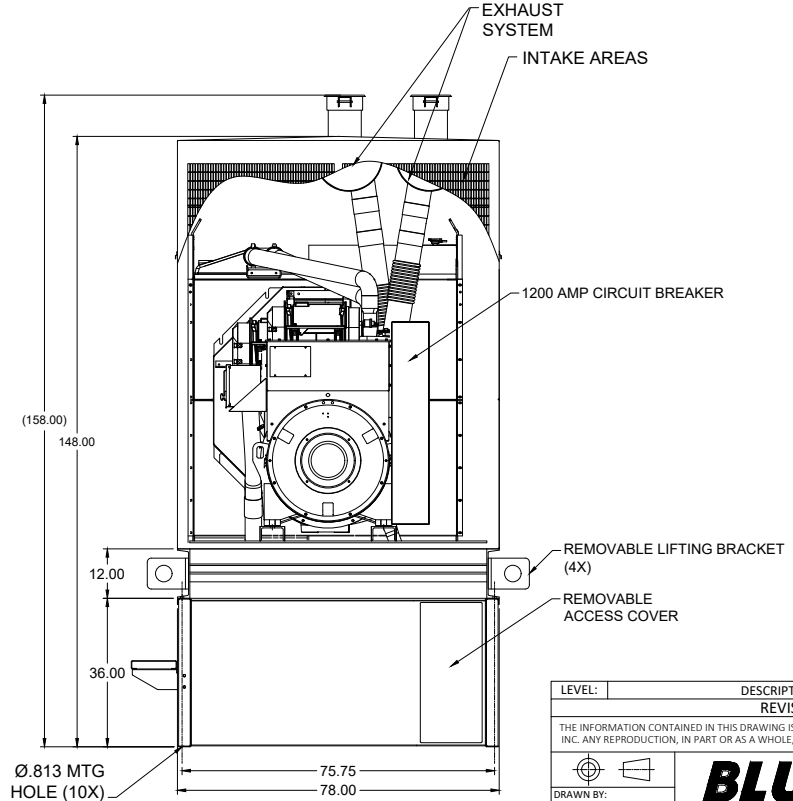
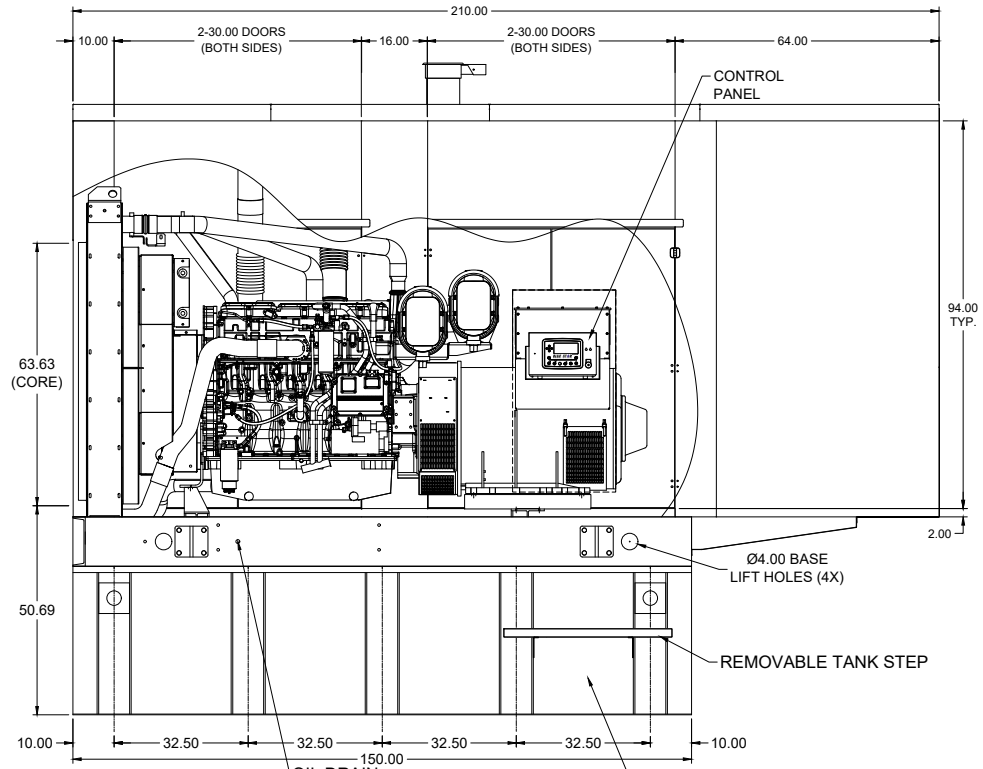
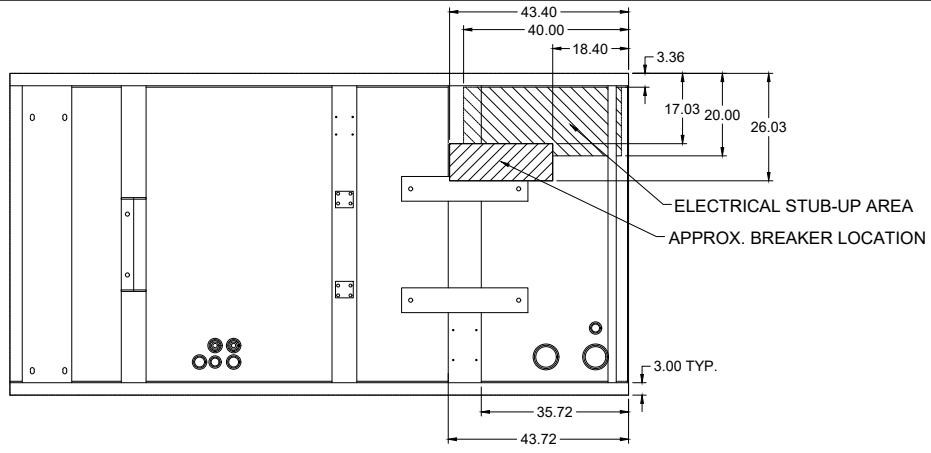


DRAWING: PD750-01-122-01

APPROXIMATE SHIP WEIGHT:
18,400 LBS.



- NOTES:
1. BREAKER DIMENSIONS ARE APPROXIMATE
2. RADIATOR CORE WIDTH: 64.25"
3. FUEL SUPPLY: 3/8" FUEL RETURN: 1/4"
4. SOUND ATTENUATION FOAM INCLUDED LEVEL 2 & 3 ENCLOSURES ONLY
5. (XX.XX) DIMENSIONS ARE FOR REFERENCE ONLY

LEVEL:	DESCRIPTION:	DATE:	BY:
REVISIONS:			
THE INFORMATION CONTAINED IN THIS DRAWING IS THE SOLE PROPERTY OF BLUE STAR POWER SYSTEMS, INC. ANY REPRODUCTION, IN PART OR AS A WHOLE, WITHOUT THE WRITTEN PERMISSION IS PROHIBITED.			
BLUE STAR Power Systems Inc.		2250 CARLSON DRIVE, NORTH MANKATO, MINNESOTA 56003 1 507 345 1776	
DRAWN BY: JDE	ENGINE: 2806C-E18TTAG7	BASE: 29400 (2-0800)	TANK: 23585(3-1129)
DATE: 10/21/2022	GENERATOR: S6L1D-C	HSG: WPE-107	SIZE: B
		SCALE: NONE	SHEET: 1 OF 1