

BLUE STAR

Power Systems Inc.

Diesel Product Line

208-600 Volt

PD750-01

60 Hz / 1800 RPM

750 kWe

Standby

Ratings

	208V	240V	480V	600V
Phase	3	3	3	3
PF	0.8	0.8	0.8	0.8
Hz	60	60	60	60
Generator Model	S6L1D-D	S6L1D-D	S6L1D-C	S6L1D-C
Connection	12 LEAD WYE	12 LEAD DELTA	12 LEAD WYE	4 LEAD WYE
kWe	750	750	750	750
AMPS	2605	2258	1129	903
Temp Rise	125°C / 40°C	125°C / 40°C	125°C / 40°C	125°C / 40°C

Standard Equipment

- | | | |
|---|---|---|
| <p>Engine</p> <ul style="list-style-type: none"> - Radiator Cooled Unit Mounted (50°C) - Radiator Duct Flange (OPU Only) - Blower Fan & Fan Drive - Starter & Alternator - Oil Pump & Filter - Oil Drain Extension w/Valve - Governor - Electronic Isochronous - 24V Battery System & Cables - Air Cleaner (Dry Single Stage) - Critical Grade Silencer Mounted - Flexible Fuel Connector - EPA Certified Tier 2 | <p>Generator</p> <ul style="list-style-type: none"> - Brushless Single Bearing - Automatic Voltage Regulator - ± 0.50% Voltage Regulation - 4 Pole, Rotating Field - 125°C Standby Temperature Rise - 100% of Rated Load - One Step - 5% Maximum Harmonic Content - NEMA MG 1, IEEE and ANSI Standards Compliance for Temperature Rise | <p>Additional</p> <ul style="list-style-type: none"> - Single Source Supplier - UL 2200 & cUL Listed - CSA Certified - Seismic Certified to IBC 2021 - NFPA 110 / CSA C282 Compliant - Microprocessor Based Digital Control Panel Mounted in NEMA 12 Enclosure - Base - Structural Steel - Main Line Circuit Breaker Mounted & Wired - Battery Charger 24V 5 Amp - Jacket Water Heater 5000W 240V w/Isolation Valves - Vibration Isolation Mounts (Pad Type) - 2 Year / 2000 Hour Standby Warranty - Standard Colors - White / Gray |
|---|---|---|

Application Data

Engine

Manufacturer:	Perkins	Displacement - Cu. In. (lit):	1,105 (18.1)
Model:	2806C-E18TTAG7	Bore - in. (cm) x Stroke - in. (cm):	5.71 (14.5) x 7.20 (18.3)
Type:	4-Cycle	Compression Ratio:	14:1
Aspiration:	Turbo Charged, CAC	Rated RPM:	1800
Cylinder Arrangement:	6 Cylinder Inline	Max HP Stby (kW _m):	1,101 (821)

Exhaust System

Standby

Gas Temp. (Stack): °F (°C)	918 (492)
Gas Volume at Stack Temp: CFM (m ³ /min)	5,866 (166)
Maximum Allowable Exhaust Restriction: in. H ₂ O (kPa)	40.0 (10.0)

Cooling System

Ambient Capacity of Radiator: °F (°C)	122 (50.0)
Maximum Allowable Static Pressure on Rad. Exhaust: in. H ₂ O (kPa)	0.50 (0.12)
Water Pump Flow Rate: GPM (lit/min)	128 (485)
Heat Rejection to Coolant: BTUM (kW)	13,086 (229)
Heat Rejection to CAC: BTUM (kW)	16,229 (284)
Heat Radiated to Ambient: BTUM (kW)	14,877 (260)

Air Requirements

Aspirating: CFM (m ³ /min)	2,509 (71.0)
Air Flow Required for Rad. Cooled Unit: CFM (m ³ /min)	31,767 (899)
Air Flow Required for Heat Exchanger/Rem. Rad. CFM (m ³ /min)	Consult Factory For Remote Cooled Applications

Fuel Consumption

At 100% of Power Rating: gal/hr (lit/hr)	54.3 (205)
At 75% of Power Rating: gal/hr (lit/hr)	43.0 (163)
At 50% of Power Rating: gal/hr (lit/hr)	30.2 (114)

Fluids Capacity

Total Oil System: gal (lit)	18.0 (68.0)
Engine Jacket Water Capacity: gal (lit)	5.49 (20.8)
System Coolant Capacity: gal (lit)	29.1 (110)

Deration Factors: Rated Power is available up to 1640 ft (500 m) at ambient temperatures to 86°F (30°C). Consult factory for site conditions above these parameters.

DCP7310 Control Panel

Standard Features

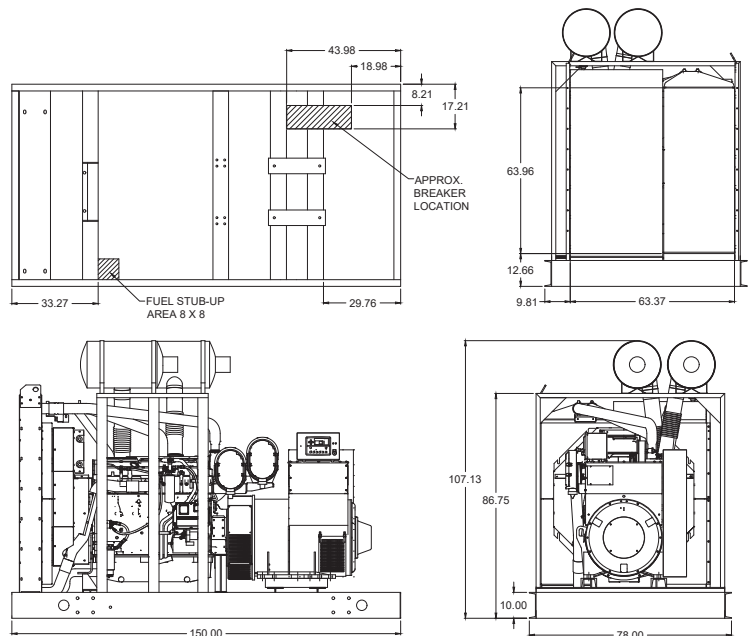
- Digital Metering
- Engine Parameters
- Generator Protection Functions
- Engine Protection
- CAN Bus (J1939) ECU Communications
- Windows-Based Software
- Multilingual Capability
- Remote Communications to DSE2548 Remote Annunciator
- 8 Programmable Contact Inputs
- 10 Contact Outputs
- RS485 Communicator Interface
- cULus Listed, CE Approved
- Event Recording
- IP 65 rating (with supplied gasket) offers increased resistance to water ingress
- NFPA 110 Level 1 Compatible



Weights / Dimensions / Sound Data

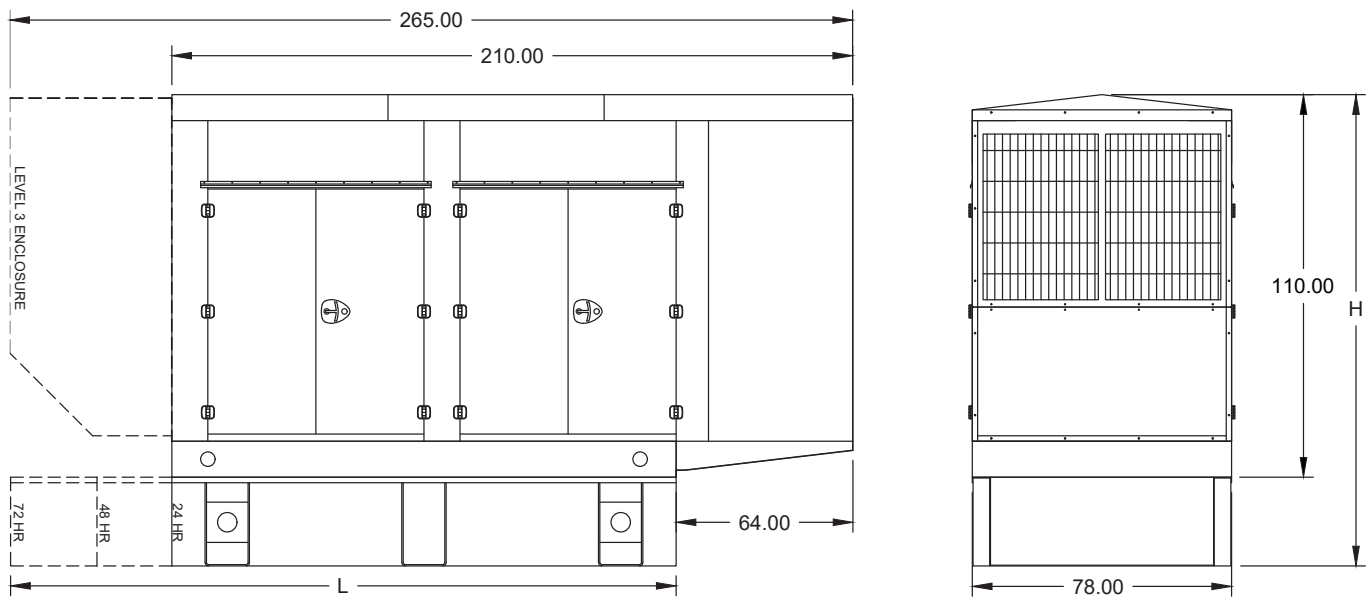
	L x W x H	Weight lbs
OPU	150 x 78 x 108 in	12,200
Level 1	210 x 78 x 110 in	14,100
Level 2	210 x 78 x 110 in	14,175
Level 3	265 x 78 x 110 in	14,675

Please allow 6-12 inches for height of exhaust stack.



*Please consult factory for 208V & 240V 3 Phase Drawings

Enclosures & Fuel Tanks



*Please consult factory for 208V & 240V 3 Phase Drawings

- All enclosure models are 200 MPH wind rating certified in accordance with IBC2021 and ASCE/SEI 7-16 standards.
- Level 2 & 3 enclosures include sound attenuation foam
- Level 3 enclosure includes frontal sound & exhaust hood.
- Enclosure height does not include exhaust stack.

	24 Hour 1300 Gallon	48 Hour 2600 Gallon	72 Hour 4000 Gallon
L	150.00	300.00	420.00
H	146.00	146.00	146.00

Notes

- All specification sheet dimensions are represented in inches.
- All drawings based on standard 480 volt standby generator. Lengths may vary with other voltages. All drawings and dimensions subject to change without notice.
- All enclosures and fuel tanks are based on the standard unit configuration. Any requested deviation can change dimensions.
- Sound data is measured at 23 feet (7 meters) in accordance with ISO 8528-10.
- All materials and specifications subject to change without notice.

American Owned



American Made

Blue Star Power Systems, Inc.

2250 Carlson Drive

North Mankato, Minnesota 56003

Phone + 1 507 345 1776

bluestarps.com

quote.bluestarps.com

sales@bluestarps.com