

CSDG - C150N6

CUMMINS / C150N6 150



**Sales and
Service**

Cummins Sales and Service

CSDG - C150N6

For assistance, questions or concerns on any material contained within this submittal packet contact one of the following people:

NOTICE

A COPY OF THIS GENERATOR SET SUBMITTAL MUST BE RETURNED TO OUR OFFICE, APPROVED IN ITS ENTIRETY AND BEARING THE DATE OF APPROVAL, STAMP OR SIGNATURE AND TITLE OF THE APPROVING AUTHORITY, BEFORE ANY ITEM WILL BE RELEASED FOR MANUFACTURE OR SHIPMENT. WE ASSUME NO RESPONSIBILITY FOR DELAYS IN OUR FORECASTED SHIPPING SCHEDULES ON ANY ITEM ON WHICH SUBMITTAL APPROVAL IS BEYOND THIRTY (30) DAYS FROM THE SUBMISSION DATE ON THE COVER PAGE.

THIS SUBMITTAL IS BASED UPON OUR INTERPRETATION OF THE PROJECT REQUIREMENTS AND/OR SPECIFICATIONS AND IS IN ACCORDANCE WITH YOUR ORDER AND PRODUCT AVAILABILITY OF FROM OUR VENDORS. PLEASE REVIEW THE ENCLOSED DATA COMPLETELY AND CAREFULLY. SHOULD ADDITIONAL INFORMATION OR CLARIFICATION BE REQUIRED PLEASE FORWARD A SUBMITTAL COPY, COMPLETE WITH YOUR NOTATIONS, TO OUR OFFICE WITHIN THIRTY (30) DAYS FOR A PROMPT RESPONSE AND/OR RESUBMITTAL.

CONSIDERABLE ATTENTION IS GIVEN TO THE PREPARATION OF THIS SUBMITTAL TO ENSURE IT IS COMPLETE, CONCISE AND CORRECT AS IS POSSIBLE. PLEASE REVIEW IT CAREFULLY AND THOROUGHLY.



Table of Contents

CSDG - C150N6

	Page
Cover Letter	1
Contacts	2
Notice Letter	3
Table of Contents	4
Bill of Materials	5
Generator Specification Sheet	6-10
Generator Data Sheet	11-13
Generator PowerCommand Control - PCC 2.3	14-20
Generator Alternator Data Sheet	21-22
Prototype Test Certificate	23
Prototype Test Summary Report	24
Generator Open Unit Drawing	25-26
Generator Circuit Breaker Specification Sheet	27-29
Generator Circuit Breaker Drawing	30-32
Generator Accessories Option Drawing	33
Generator Enclosure Sound Data Sheet	34
Generator Enclosure Drawing	35
Generator Aux 101 Specification Sheet	36-38
Generator Battery Charger Specification Sheet	39-40
Generator - ATS - Accessories Wiring Diagram	41
Generator Warranty Statement - Base	42-43



Bill of Materials

Feature Code	Description	Qty
C150N6 US-Stat C150 N6 A331-2 L155-2 L090-2 L193-2 L224-2 L225-2 B240-2 R098-2 B946-2 F065-2 F216-2 P176-2 F252-2 F179-2 H609-2 H703-2 H012-2 KS53-2 H536-2 KV03-2 KX32-2 KB72-2 A366-2 C284-2 A422-2 D041-2 A333-2 BB89-2 E125-2 H389-2 E089-2 H669-2 E153-2 H706-2 L028-2 L050-2 A322-2 H268-2	C150N6, 150kW, 60Hz, Standby, Natural Gas/Propane Genset U.S. EPA, Stationary Emergency Application C150N6, 150kW, 60Hz, Standby, Natural Gas/Propane Genset Duty Rating-Standby Power (ESP) Emissions Certification-SI, EPA, Emergency, Stationary, 40CFR60 Listing-UL 2200 NFPA 110 Type 10 Level 1 Capable IBC Seismic Certification OSHPD Seismic Certification Exciter/Reg-Torque Match Voltage-120/208, 3 Phase, Wye, 4 Wire Alternator-60Hz, 12L, 208/120V, 120C, 40C Ambient Battery Rack Aluminum Weather Protective Enclosure, with Exhaust System Enclosure Color-Green, Aluminum Enclosure-Wind Load 180 MPH, ASCE7-10 Skidbase-Housing Ready Control Mounting-Left Facing PowerCommand 2.3 Controller Gauge-Oil Pressure Signals-Auxiliary, 8 Inputs/8 Outputs Control Display Language-English Load Connection-Single Circuit Breaker, Location A, 200A-600A, 3P, LSI, 600 Volts AC, 80%, UL Bottom Entry, Right Engine Governor-Electronic, Isochronous Single Gas Fuel-NG or LP Vapor Engine Starter-12 Volt DC Motor Engine Air Cleaner-Normal Duty Battery Charging Alternator Battery Charger-6 Amp, Regulated Engine Cooling-Radiator, High Ambient Air Temperature, Ship Fitted Shutdown-Low Coolant Level Extension-Coolant Drain Engine Coolant-50% Antifreeze, 50% Water Mixture Coolant Heater Engine Oil Genset Warranty-2 Years Base Literature-English Packing-Skid, Poly Bag Extension-Oil Drain	1



Spark-ignited generator set

125 & 150 kW standby
EPA emissions



Description

Cummins Power Generation generator sets are fully integrated power generation systems providing optimum performance, reliability and versatility for stationary standby applications.

Features

Gas engine - Rugged 6-cylinder Cummins QSJ8.9G spark-ignited engine delivers reliable power. The electronic air/fuel ratio control provides optimum engine performance and fast response to load changes.

Alternator - Several alternator sizes offer selectable motor starting capability with low reactance 2/3 pitch windings, low waveform distortion with non-linear loads and fault clearing short-circuit capability.

Control system - The PowerCommand® 2.3 electronic control is standard equipment and provides total generator set system integration including automatic remote starting/stopping, precise frequency and voltage regulation, alarm and status message display, output metering, auto-shutdown at fault detection and NFPA 110 Level 1 compliance. The PowerCommand® 3.3 control is also available as an option.

Cooling system - Standard cooling package provides reliable running at up to 50° C (122° F) ambient temperature.

Enclosures - The aesthetically appealing enclosure incorporates special designs that deliver one of the quietest generators of its kind. Aluminum material plus durable powder coat paint provides the best anti-corrosion performance. The generator set enclosure has been evaluated to withstand 180 MPH wind loads in accordance with ASCE7-10. The design has hinged doors to provide easy access for service and maintenance.

NFPA - The generator set accepts full rated load in a single step in accordance with NFPA 110 for Level 1 systems.

Warranty and service - Backed by a comprehensive warranty and worldwide distributor and dealer network.

Model	Natural Gas		Propane		Data sheets
	Standby (60 Hz)		Standby (60 Hz)		
	kW	kVA	kW	kVA	60 Hz
C125N6	125	156	125	156	NAD-6303
C150N6	150	188	150	188	NAD-6304

Generator set specifications

Governor regulation class	ISO 8528 Part 1 Class G3*
Voltage regulation, no load to full load	± 1.0%
Random voltage variation	± 1.0%
Frequency regulation	Isochronous
Random frequency variation	± 0.25% @ 60 Hz
Radio frequency emissions compliance	FCC code title 47 part 15 class B

* - with heavy-duty engine air cleaner option installed

Engine specifications

Design	Turbocharged and Aftercooled
Bore	114.1 mm (4.49 in)
Stroke	144.5 mm (5.69 in)
Displacement	8.9 liters (543 in ³)
Cylinder block	Cast iron, in-line 6 cylinder
Battery capacity	850 amps at ambient temperature of 0° F to 32° F (-18° C to 0° C)
Battery charging alternator	100 amps
Starting voltage	12-volt, negative ground
Lube oil filter type(s)	Spin-on
Standard cooling system	125 kW - 50° C (122° F) ambient cooling system 150 kW - 45° C (113° F) ambient cooling system
Rated speed	1800 rpm

Alternator specifications

Design	Brushless, 4 pole, drip proof, revolving field
Stator	2/3 pitch
Rotor	Direct coupled, flexible disc
Insulation system	Class H per NEMA MG1-1.65
Standard temperature rise	120° C (248° F) standby
Exciter type	Torque match (shunt) with PMG as option
Alternator cooling	Direct drive centrifugal blower
AC waveform total harmonic distortion	< 5% no load to full linear load, < 3% for any single harmonic
Telephone influence factor (TIF)	< 50 per NEMA MG1-22.43
Telephone harmonic factor (THF)	< 3%

Available voltages

1-phase	3-phase
• 120/240	• 120/208
• 120/240	• 277/480
• 277/480	• 347/600
• 347/600	• 127/220

Generator set options

Fuel system

- Single fuel - natural gas or propane vapor, field selectable
- Dual fuel – natural gas and propane vapor auto changeover
- Low fuel gas pressure warning

Engine

- Normal or Heavy-duty engine air cleaner
- Shut down – low oil pressure
- Extension – oil drain
- Engine oil heater

Alternator

- 120° C temperature rise alternator
- 105° C temperature rise alternator
- PMG
- Alternator heater, 120V
- Reconnectable full 1 phase output alternator

Control

- PC2.3 with AmpSentry
- PC3.3 with Paralleling
- AC output analog meters
- Stop switch – emergency
- Auxiliary output relays (2)
- Auxiliary configurable signal inputs (8) and relay outputs (8)

Electrical

- One, two or three circuit breaker configurations
 - 80% rated circuit breakers
- 100% rated LSI circuit breakers

Enclosure

- Aluminum enclosures with muffler installed – green color
- Weather
 - Sound Level 1
 - Sound Level 2

Cooling system

- Shutdown – low coolant level
- Warning – low coolant level
- Extension – coolant drain
- Coolant heater options:
 - < 4° C (40° F) - Cold weather
 - < -17° C (0° F) - Extreme cold

Exhaust system

- Exhaust connector NPT
- Exhaust muffler mounted

Generator set application

- Base barrier – elevated genset
- Battery rack, single or dual battery
- Radiator outlet duct adapter

Warranty

- Base warranty – 2 year / 1000 hours, standby
- 3-year standby warranty options
- 5-year standby warranty options

Generator set accessories

- Coolant heaters – 1000W / 1500W
- Battery rack, single or dual battery
- Battery heater kit
- Engine oil heater
- Remote control displays
- Auxiliary output relays (2)
- Auxiliary configurable signal inputs (8) and relay outputs (8)
- Annunciator – RS485

- Remote monitoring device – PowerCommand 500 550
- Battery charger – stand-alone, 12V
- Circuit breakers
- Enclosure Sound Level 1 to Sound Level 2 upgrade kit
- Base barrier – elevated generator set
- Mufflers – industrial, residential, or critical
- Alternator PMG
- Alternator heater

Our energy working for you.™

©2019 Cummins | NAS-6298-EN (06/19) A057Y417

power.cummins.com

Control system PowerCommand 2.3



An integrated generator set control system providing voltage regulation, engine protection and operator interface.

Power management - Provides battery monitoring and testing features and smart-starting control system.

InPower™ – PC-based service tool available for detailed diagnostics.

PCCNet RS485 - Network interface (standard) to devices such as remote annunciator for NFPA 110 applications.

Control boards - Potted for environmental protection.

Ambient operation - Suitable for operation in ambient temperatures from -40° C to +70° C and altitudes to 13,000 feet (5,000 meters).

AC Protection

- AmpSentry protective relay
- Over current warning and shutdown
- Over and under voltage shutdown
- Over and under frequency shutdown
- Over excitation (loss of sensing) fault
- Field overload
- Overload warning
- Reverse kW shutdown
- Reverse VAR shutdown
- Short circuit protection

Engine protection

- Overspeed shutdown
- Low oil pressure warning and shutdown
- High coolant temperature warning and shutdown
- Low coolant level warning or shutdown
- Low coolant temperature warning
- High, low and weak battery voltage warning
- Fail to start (overcrank) shutdown
- Fail to crank shutdown
- Redundant start disconnect
- Cranking lockout
- Sensor failure indication
- Low fuel level warning or shutdown
- Emergency stop
- Fuel-in-rupture-basin warning or shutdown

Operator/display panel

- Manual off switch
- 320 x 240 Pixels graphic LED backlight LCD with push button access for viewing engine and alternator data and providing setup, controls, and adjustments (English, Spanish, or French).
- LED lamps indicating genset running, not in auto, common warning, common shutdown, manual run mode and remote start
- Suitable for operation in ambient temperatures from -20° C to +70° C

Alternator data

- Line-to-line and Line-to-neutral AC volts
- 3-phase AC current
- Frequency
- Total kVA

Engine data

- DC voltage
- Lube oil pressure
- Coolant temperature
- Engine speed

Other data

- Generator set model data
- Start attempts, starts, running hours
- Fault history
- RS485 Modbus® interface
- Data logging and fault simulation (requires InPower service tool)

Digital governing (optional)

- Integrated digital electronic isochronous governor
- Temperature dynamic governing

Digital voltage regulation

- Integrated digital electronic voltage regulator
- 2-phase line-to-line sensing
- Configurable torque matching

Control functions

- Time delay start and cooldown
- Cycle cranking
- PCCNet interface
- (2) Configurable inputs
- (2) Configurable outputs
- Remote emergency stop
- Automatic transfer switch (ATS) control
- Generator set exercise, field adjustable

Options

- Auxiliary output relays (2)
- Remote annunciator with (3) configurable inputs and (4) configurable outputs
- PMG alternator excitation
- PowerCommand 500/550 for remote monitoring and alarm notification (accessory)
- Auxiliary, configurable signal inputs (8) and configurable relay outputs (8)
- Digital governing
- AC output analog meters (bargraph)
 - Color-coded graphical display of:
 - 3-phase AC voltage
 - 3-phase current
 - Frequency
 - kVA
- Remote operator panel

Ratings definitions

Emergency standby power (ESP):

Applicable for supplying power to varying electrical load for the duration of power interruption of a reliable utility source. Emergency Standby Power (ESP) is in accordance with ISO 8528. Fuel Stop power in accordance with ISO 3046, AS 2789, DIN 6271 and BS 5514.

Limited-time running power (LTP):

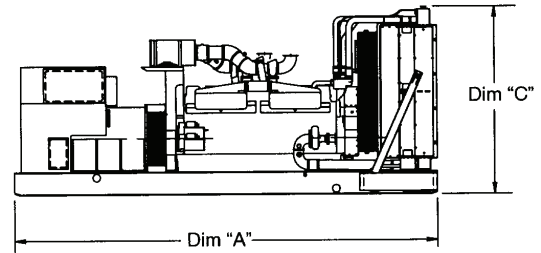
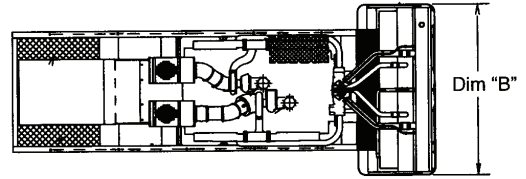
Applicable for supplying power to a constant electrical load for limited hours. Limited Time Running Power (LTP) is in accordance with ISO 8528.

Prime power (PRP):

Applicable for supplying power to varying electrical load for unlimited hours. Prime Power (PRP) is in accordance with ISO 8528. Ten percent overload capability is available in accordance with ISO 3046, AS 2789, DIN 6271 and BS 5514.

Base load (continuous) power (COP):

Applicable for supplying power continuously to a constant electrical load for unlimited hours. Continuous Power (COP) in accordance with ISO 8528, ISO 3046, AS 2789, DIN 6271 and BS 5514.



This outline drawing is for reference only. See respective model data sheet for specific model outline drawing number.

Do not use for installation design





Model	Dim "A" mm (in.)	Dim "B" mm (in.)	Dim "C" mm (in.)	Set Weight* wet kg (lbs.)
Open Set				
C125N6	2867 (113)	1016 (40)	1415 (56)	1580 (3483)
C150N6	2867 (113)	1016 (40)	1415 (56)	1580 (3483)
Weather Protective Enclosure				
C125N6	2867 (113)	1016 (40)	1836 (72)	1661 (3662)
C150N6	2867 (113)	1016 (40)	1836 (72)	1661 (3662)
Sound Attenuated Enclosure Level 1				
C125N6	3621 (143)	1016 (40)	1836 (72)	1776 (3915)
C150N6	3621 (143)	1016 (40)	1836 (72)	1776 (3915)
Sound Attenuated Enclosure Level 2				
C125N6	4061 (160)	1016 (40)	1836 (72)	1791 (3940)
C150N6	4061 (160)	1016 (40)	1836 (72)	1791 (3940)

* Weights above are average. Actual weight varies with product configuration

see below drawings for overall shipping weight and dimensions

Codes and standards

Codes or standards compliance may not be available with all model configurations – consult factory for availability.

 <p>The Prototype Test Support (PTS) program verifies the performance integrity of the generator set design. Cummins Power Generation products bearing the PTS symbol meet the prototype test requirements of NFPA 110 for Level 1 systems.</p>	 <p>This generator set is designed in facilities certified to ISO 9001 and manufactured in facilities certified to ISO 9001 or ISO 9002.</p>
<p>International Building Code</p> <p>The generator set is certified to International Building Code (IBC) 2012.</p>	 <p>The generator set is available Listed to UL 2200, Stationary Engine Generator Assemblies.</p>
	 <p>All low voltage models are CSA certified to product class 4215-01.</p>
	<p>U.S. EPA</p> <p>Engine certified to U.S. EPA SI Stationary Emission Regulation 40 CFR, Part 60.</p>

Warning: Back feed to a utility system can cause electrocution and/or property damage. Do not connect to any building's electrical system except through an approved device or after building main switch is open.

North America
1400 73rd Avenue N.E.
Minneapolis, MN 55432
USA

Phone 763 574 5000
 Fax 763 574 5298

Our energy working for you.™

©2019 Cummins All rights reserved.
 Cummins is a registered trademarks of Cummins Inc. PowerCommand, AmpSentry, InPower and "Our energy working for you." are trademarks of Cummins. Other company, product, or service names may be trademarks or service marks of others. Specifications are subject to change without notice.
 NAS-6298-EN (06/19) A057Y417



Generator Set Data Sheet



Model: C150N6
Frequency: 60 Hz
Fuel type: Natural gas
kW rating: 150 Natural gas standby

Emissions level: EPA Emissions

Fuel consumption	Natural gas Standby				Propane Standby			
	kW (kVA)				kW (kVA)			
Ratings	150 (188)				150 (188)			
Load	1/4	1/2	3/4	Full	1/4	1/2	3/4	Full
scfh	718.7	1111.3	1487.2	1915.0	288.4	438.5	596.3	783.0
m ³ /hr	20.35	31.47	42.12	54.3	8.17	12.42	16.89	22.2

Engine	Natural gas Standby Rating	Propane Standby Rating
Engine model	QSJ8.9G	
Configuration	Cast Iron, In line, 6 cylinders	
Aspiration	Turbocharged and aftercooled	
Gross engine power output, kWm (bhp)	179 (240)	
Bore, mm (in)	114.1 (4.49)	
Stroke, mm (in)	144.5 (5.69)	
Rated speed, rpm	1800	
Compression ratio	9.7:1	
Lube oil capacity, L (qt)	20.8 (22)	

Fuel supply pressure	
Minimum operating pressure, kPa (in H ₂ O)	1.5 (6)
Maximum operating pressure, kPa (in H ₂ O)	3.5 (13)

Air	Natural gas Standby Rating	Propane Standby Rating
Combustion air, m ³ /min (scfm)	13.7 (483)	13.9 (490)
Maximum normal duty air cleaner restriction, kPa (in H ₂ O)	0.37 (1.5)	
Maximum heavy-duty air cleaner restriction, kPa (in H ₂ O)	3.7 (15.0)	

Our energy working for you.™

©2019 Cummins NAS-6303-EN (06/19) A058H646

power.cummins.com

Exhaust	Natural gas	Propane
	Standby Rating	Standby Rating
Exhaust flow at set rated load, m ³ /min (cfm)	40.8 (1440)	42.7 (1509)
Exhaust temperature at set rated load, °C (°F)	641.1 (1186)	668.9 (1236)
Maximum back pressure, kPa (inH ₂ O)	9 (36.1)	

Standard set-mounted radiator cooling	Natural gas	Propane
	Standby Rating	Standby Rating
Ambient design, °C (°F)	45 (113)	
Fan load, kWm (HP)	10.3 (13.8)	
Coolant capacity (with radiator), L (US gal)	26 (6.9)	
Cooling system air flow, m ³ /min (scfm)	249.2 (8800)	
Maximum cooling air flow static restriction, kPa (inH ₂ O)	0.125 (0.5)	

Weights	Natural gas	Propane
	Unit wet weight kg (lb)	1776 (3915)

Note: Weights represent a set with standard features. See outline drawing for weights of other configurations

see below drawings for overall shipping weight and dimensions

Derating factors

Natural gas	
Standby	Engine power available up to 775 m (2540 ft.) and ambient temperatures up to 40° C (104° F). Above these conditions, derate at 4.25% per 300 m (985 ft.) and 2% per 10° C (18° F).
Propane	
Standby	Engine power available up to 775 m (2540 ft.) and ambient temperatures up to 40° C (104° F). Above these conditions, derate at 4.25% per 300 m (985 ft.) and 2% per 10° C (18° F).

Ratings definitions

Emergency standby power (ESP)	Limited-time running power (LTP)	Prime power (PRP)	Base load (continuous) power (COP)
Applicable for supplying power to varying electrical load for the duration of power interruption of a reliable utility source. Emergency Standby Power (ESP) is in accordance with ISO 8528. Fuel Stop power in accordance with ISO 3046, AS 2789, DIN 6271 and BS 5514.	Applicable for supplying power to a constant electrical load for limited hours. Limited Time Running Power (LTP) is in accordance with ISO 8528.	Applicable for supplying power to varying electrical load for unlimited hours. Prime Power (PRP) is in accordance with ISO 8528. Ten percent overload capability is available in accordance with ISO 3046, AS 2789, DIN 6271 and BS 5514.	Applicable for supplying power continuously to a constant electrical load for unlimited hours. Continuous Power (COP) is in accordance with ISO 8528, ISO 3046, AS 2789, DIN 6271 and BS 5514.

Alternator data

Standard alternators	Single phase table	Three phase table					Full single phase output, reconnectable
Maximum temperature rise above 40° C ambient	120° C	120° C	120° C	120° C	120° C	120° C	120° C
Feature code	BB88-2	B986-2	B946-2	B943-2	B952-2	BB86-2	BB88-2
Alternator data sheet number	ADS-212	ADS-210	ADS-210	ADS-209	ADS-209	ADS-209	ADS-212
Voltage ranges	120/240	120/240	120/208	277/480	347/600	127/220	120 - 480
Voltage feature code	R104-2	R106-2	R098-2	R002-2	R114-2	R020-2	Varies by voltage
Surge kW	152	156	156	156	156	156	Varies by voltage
Full load current amps at standby rating	625	452	521	226	181	493	Varies by voltage

Optional alternators for improved starting capability	Single phase table	Three phase table					Full single phase output, reconnectable
Maximum temperature rise above 40° C ambient	105° C	105° C	105° C	105° C	105° C	105° C	105° C
Feature code	BB87-2	BB94-2	BB93-2	BB95-2	BB92-2	BB85-2	BB87-2
Alternator data sheet number	ADS-212	ADS-210	ADS-210	ADS-209	ADS-209	ADS-210	ADS-212
Voltage ranges	120/240	120/240	120/208	277/480	347/600	127/220	120 – 480
Voltage feature code	R104-2	R106-2	R098-2	R002-2	R114-2	R020-2	Varies by voltage
Surge kW	153	157	156	157	157	156	Varies by voltage
Full load current amps at standby rating	625	452	521	226	181	493	Varies by voltage

Formulas for calculating full load currents:

Three phase output

$$\frac{\text{kW} \times 1000}{\text{Voltage} \times 1.73 \times 0.8}$$

Single phase output

$$\frac{\text{kW} \times \text{SinglePhaseFactor} \times 1000}{\text{Voltage}}$$

Warning: Back feed to a utility system can cause electrocution and/or property damage. Do not connect to any buildings electrical system except through an approved device or after building main switch is open.

North America
1400 73rd Avenue N.E.
Minneapolis, MN 55432
USA

Phone 763 574 5000
 Fax 763 574 5298

Our energy working for you.™

©2019 Cummins All rights reserved.
 Cummins is a registered trademarks of Cummins Inc. PowerCommand, AmpSentry, InPower and "Our energy working for you." are trademarks of Cummins. Other company, product, or service names may be trademarks or service marks of others. Specifications are subject to change without notice.
 NAS-6304-EN (06/19) A058H646



power.cummins.com



PowerCommand®

2.3 Control System



Control System Description

The PowerCommand control system is a microprocessor-based generator set monitoring, metering and control system designed to meet the demands of today's engine driven generator sets. The integration of all control functions into a single control system provides enhanced reliability and performance, compared to conventional generator set control systems. These control systems have been designed and tested to meet the harsh environment in which gensets are typically applied.

Features

- 320 x 240 pixels graphic LED backlight LCD.
- Multiple language support.
- AmpSentry™ protective relay - true alternator overcurrent protection.
- Real time clock for fault and event time stamping.
- Exerciser clock and time of day start/stop.
- Digital voltage regulation. Three phase full wave FET type regulator compatible with either shunt or PMG systems.
- Generator set monitoring and protection.
- 12 and 24 VDC battery operation.
- Modbus® interface for interconnecting to customer equipment.
- Warranty and service. Backed by a comprehensive warranty and worldwide distributor service network.
- Certifications - suitable for use on generator sets that are designed, manufactured, tested and certified to relevant UL, NFPA, ISO, IEC, Mil Std., CE and CSA standards.

PowerCommand Digital Genset Control PCC 2300



Description

The PowerCommand generator set control is suitable for use on a wide range of generator sets in non-paralleling applications. The PowerCommand control is compatible with shunt or PMG excitation style. It is suitable for use with reconnectable or non-reconnectable generators, and it can be configured for any frequency, voltage and power connection from 120-600 VAC Line-to-Line.

Power for this control system is derived from the generator set starting batteries. The control functions over a voltage range from 8 VDC to 30 VDC.

Features

- 12 and 24 VDC battery operation.
- Digital voltage regulation - Three phase full wave FET type regulator compatible with either shunt or PMG systems. Sensing is three phase.
- Full authority engine communications (where applicable) - Provides communication and control with the Engine
- due to thermal Control Module (ECM).
- AmpSentry™ protection provides industry-leading alternator overcurrent protection:
 - Time-based generator protection applicable to both line-to-line and line-to-neutral, that can detect an unbalanced fault condition and swiftly react appropriately. Balanced faults can also be detected by AmpSentry and appropriate acted upon.
- Reduces the risk of Arc Flash overload or electrical faults by inverse time protection
- Common harnessing - with higher feature Cummins controls. Allows for easy field upgrades.
- Generator set monitoring - Monitors status of all critical engine and alternator functions.
- Digital genset metering (AC and DC).
- Genset battery monitoring system to sense and warn against a weak battery condition.
- Configurable for single or three phase AC metering.
- Engine starting - Includes relay drivers for starter, Fuel Shut Off (FSO), glow plug/spark ignition power and switch B+ applications.
- Generator set protection – Protects engine and alternator.
- Real time clock for fault and event time stamping.
- Exerciser clock and time of day start/stop.
- Advanced serviceability - using InPower™, a PC-based software service tool.

- Environmental protection - The control system is designed for reliable operation in harsh environments. The main control board is a fully encapsulated module that is protected from the elements.
- Modbus interface for interconnecting to customer equipment.
- Configurable inputs and outputs - Four discrete inputs and four dry contact relay outputs.
- Warranty and service - Backed by a comprehensive warranty and worldwide distributor service network.
- Certifications - Suitable for use on generator sets that are designed, manufactured, tested and certified to relevant UL, NFPA, ISO, IEC, Mil Std., CE and CSA standards.

Base Control Functions

HMI Capability

Operator adjustments - The HMI includes provisions for many set up and adjustment functions.

Generator set hardware data - Access to the control and software part number, generator set rating in kVA and generator set model number is provided from the HMI or InPower.

Data logs - Includes engine run time, controller on time, number of start attempts, total kWh, and load profile (control logs data indicating the operating hours at percent of rated kW load, in 5% increments. The data is presented on the operation panel based on total operating hours on the generator.)

Fault history - Provides a record of the most recent fault conditions with control date and time stamp. Up to 32 events are stored in the control non-volatile memory.

Alternator data

- Voltage (single or three phase Line-to-Line and Line-to-Neutral)
- Current (single or three phase)
- kW, kVar, power factor, kVA (three phase and total)
- Frequency

AmpSentry: 3x current regulation for downstream tripping/motor inrush management. Thermal damage curve (3-phase short) or fixed timer (2 sec for 1- Phase Short or 5 sec for 2-Phase short).

Engine data

- Starting battery voltage
- Engine speed
- Engine temperature
- Engine oil pressure
- Engine oil temperature
- Intake manifold temperature
- Comprehensive Full Authority Engine (FAE) data (where applicable)

Service adjustments - The HMI includes provisions for adjustment and calibration of generator set control functions. Adjustments are protected by a password. Functions include:

Service adjustments (continued)

- Engine speed governor adjustments
- Voltage regulation adjustments
- Cycle cranking
- Configurable fault set up
- Configurable output set up
- Meter calibration
- Display language and units of measurement

Engine Control

SAE-J1939 CAN interface to full authority ECMs (where applicable). Provides data swapping between genset and engine controller for control, metering and diagnostics.

12 VDC/24 VDC battery operations - PowerCommand will operate either on 12 VDC or 24 VDC batteries.

Temperature dependent governing dynamics (with electronic governing) - modifies the engine governing control parameters as a function of engine temperature. This allows the engine to be more responsive when warm and more stable when operating at lower temperature levels.

Isochronous governing - (where applicable) Capable of controlling engine speed within +/-0.25% for any steady state load from no load to full load. Frequency drift will not exceed +/-0.5% for a 33 °C (60 °F) change in ambient temperature over an 8 hour period.

Droop electronic speed governing - Control can be adjusted to droop from 0 to 10% from no load to full load.

Remote start mode - It accepts a ground signal from remote devices to automatically start the generator set and immediately accelerate to rated speed and voltage. The remote start signal will also wake up the control from sleep mode. The control can incorporate a time delay start and stop.

Remote and local emergency stop - The control accepts a ground signal from a local (genset mounted) or remote (facility mounted) emergency stop switch to cause the generator set to immediately shut down. The generator set is prevented from running or cranking with the switch engaged. If in sleep mode, activation of either emergency stop switch will wakeup the control.

Sleep mode - The control includes a configurable low current draw state to minimize starting battery current draw when the genset is not operating. The control can also be configured to go into a low current state while in auto for prime applications or applications without a battery charger.

Engine starting - The control system supports automatic engine starting. Primary and backup start disconnects are achieved by one of two methods: magnetic pickup or main alternator output frequency. The control also supports configurable glow plug control when applicable.

Cycle cranking - Is configurable for the number of starting cycles (1 to 7) and duration of crank and rest periods. Control includes starter protection algorithms to prevent the operator from specifying a starting sequence that might be damaging.

Time delay start and stop (cooldown) - Configurable for time delay of 0-300 seconds prior to starting after receiving a remote start signal and for time delay of 0-600 seconds prior to shut down after signal to stop in normal operation modes. Default for both time delay periods is 0 seconds.

Alternator Control

The control includes an integrated three phase Line-to-Line sensing voltage regulation system that is compatible with shunt or PMG excitation systems. The voltage regulation system is a three phase full wave rectified and has an FET output for good motor starting capability.

Major system features include:

Digital output voltage regulation - Capable of regulating output voltage to within +/-1.0% for any loads between no load and full load. Voltage drift will not exceed +/- 1.5% for a 40 °C (104 °F) change in temperature in an eight hour period. On engine starting or sudden load acceptance, voltage is controlled to a maximum of 5% overshoot over nominal level. The automatic voltage regulator feature can be disabled to allow the use of an external voltage regulator.

Droop voltage regulation - Control can be adjusted to droop from 0-10% from no load to full load.

Torque-matched V/Hz overload control - The voltage roll-off set point and rate of decay (i.e. the slope of the V/Hz curve) is adjustable in the control.

Fault current regulation - PowerCommand will regulate the output current on any phase to a maximum of three times rated current under fault conditions for both single phase and three phase faults. In conjunction with a permanent magnet generator, it will provide three times rated current on all phases for motor starting and short circuit coordination purpose.

Protective Functions

On operation of a protective function the control will indicate a fault by illuminating the appropriate status LED on the HMI, as well as display the fault code and fault description on the LCD. The nature of the fault and time of occurrence are logged in the control. The service manual and InPower service tool provide service keys and procedures based on the service codes provided.

Protective functions include:

Battle Short Mode

When enabled and the *battle short* switch is active, the control will allow some shutdown faults to be bypassed. If a bypassed shutdown fault occurs, the fault code and description will still be annunciated, but the genset will not shutdown. This will be followed by a *fail to shutdown* fault. Emergency stop shutdowns and others that are critical for proper operation are not bypassed. Please refer to the control application guide or manual for list of these faults.

Derate

The derate function reduces output power of the genset in response to a fault condition. If a derate command occurs while operating on an isolated bus, the control will issue commands to reduce the load on the genset via contact closures or modbus.

Configurable Alarm and Status Inputs

The control accepts up to four alarm or status inputs (configurable contact closed to ground or open) to indicate a configurable (customer-specified) condition. The control is programmable for warning, shutdown or status indication and for labeling the input.

Emergency Stop

Annunciated whenever either emergency stop signal is received from external switch.

Full Authority Electronic Engine Protection

Engine fault detection is handled inside the engine ECM. Fault information is communicated via the SAE-J1939 data link for annunciation in the HMI.

General Engine Protection

Low and high battery voltage warning - Indicates status of battery charging system (failure) by continuously monitoring battery voltage.

Weak battery warning - The control system will test the battery each time the generator set is signaled to start and indicate a warning if the battery indicates impending failure.

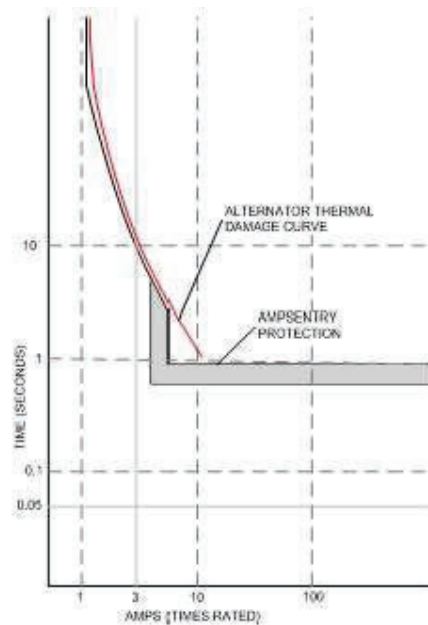
Fail to start (overcrank) shutdown - The control system will indicate a fault if the generator set fails to start by the completion of the engine crank sequence.

Fail to crank shutdown - Control has signaled starter to crank engine but engine does not rotate.

Cranking lockout - The control will not allow the starter to attempt to engage or to crank the engine when the engine is rotating.

Alternator Protection

AmpSentry protective relay - A comprehensive monitoring and control system integral to the PowerCommand Control System that guards the electrical integrity of the alternator and power system by providing protection against a wide array of fault conditions in the generator set or in the load. It also provides single and three phase fault current regulation so that downstream protective devices have the maximum current available to quickly clear fault conditions without subjecting the alternator to potentially catastrophic failure conditions. Thermal damage curve (3-Phase short) or fixed timer (2 sec for 1-Phase short, 5 sec for 2-Phase short). See document R1053 for a full-size time over current curve.



AmpSentry Maintenance Mode (AMM) - Instantaneous tripping, if AmpSentry Maintenance mode is active (50mS response to turn off AVR excitation/shutdown genset) for arc flash reduction when personnel are near genset.

High AC voltage shutdown (59) - Output voltage on any phase exceeds preset values. Time to trip is inversely proportional to amount above threshold. Values adjustable from 105-125% of nominal voltage, with time delay adjustable from 0.1-10 seconds. Default value is 110% for 10 seconds.

Low AC voltage shutdown (27) - Voltage on any phase has dropped below a preset value. Adjustable over a range of 50-95% of reference voltage, time delay 2-20 seconds. Default value is 85% for 10 seconds. Function tracks reference voltage. Control does not nuisance trip when voltage varies due to the control directing voltage to drop, such as during a V/Hz roll-off during synchronizing.

Under frequency shutdown (81 u) - Generator set output frequency cannot be maintained. Settings are adjustable from 2-10 Hz below reference governor set point, for a 5- 20 second time delay. Default: 6 Hz, 10 seconds.

Under frequency protection is disabled when excitation is switched off, such as when engine is operating in idle speed mode.

Over frequency shutdown/warning (81 o) - Generator set is operating at a potentially damaging frequency level. Settings are adjustable from 2-10 Hz above nominal governor set point for a 1-20 second time delay. Default: 6 Hz, 20 seconds, disabled.

Overcurrent warning/shutdown - Thresholds and time delays are configurable. Implementation of the thermal damage curve with instantaneous trip level calculated based on current transformer ratio and application power rating.

Loss of sensing voltage shutdown - Shutdown of generator set will occur on loss of voltage sensing inputs to the control.

Field overload shutdown - Monitors field voltage to shutdown generator set when a field overload condition occurs.

Over load (kW) warning - Provides a warning indication when engine is operating at a load level over a set point.

Adjustment range: 80-140% of application rated kW, 0-120 second delay. Defaults: 105%, 60 seconds.

Reverse power shutdown (32) - Adjustment range: 5-20% of standby kW rating, delay 1-15 seconds. Default: 10%, 3 seconds.

Reverse Var shutdown - Shutdown level is adjustable: 15-50% of rated Var output, delay 10-60 seconds. Default: 20%, 10 seconds.

Short circuit protection - Output current on any phase is more than 175% of rating and approaching the thermal damage point of the alternator. Control includes algorithms to protect alternator from repeated over current conditions over a short period of time.

Field Control Interface

Input signals to the PowerCommand control include:

- Coolant level (where applicable)
- Fuel level (where applicable)
- Remote emergency stop
- Remote fault reset
- Remote start
- Battleshort
- Rupture basin
- Start type signal
- Configurable inputs - Control includes (4) input signals from customer discrete devices that are configurable for warning, shutdown or status indication, as well as message displayed

Output signals from the PowerCommand control include:

- Load dump signal: Operates when the generator set is in an overload condition.
- Delayed off signal: Time delay based output which will continue to remain active after the control has removed the run command. Adjustment range: 0 – 120 seconds. Default: 0 seconds.

- Configurable relay outputs: Control includes (4) relay output contacts (3 A, 30 VDC). These outputs can be configured to activate on any control warning or shutdown fault as well as ready to load, not in auto, common alarm, common warning and common shutdown.

- Ready to load (generator set running) signal: Operates when the generator set has reached 90% of rated speed and voltage and latches until generator set is switched to off or idle mode.

Communications Connections Include:

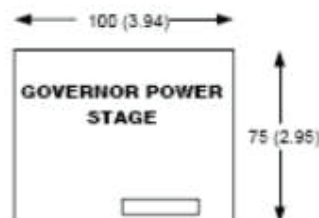
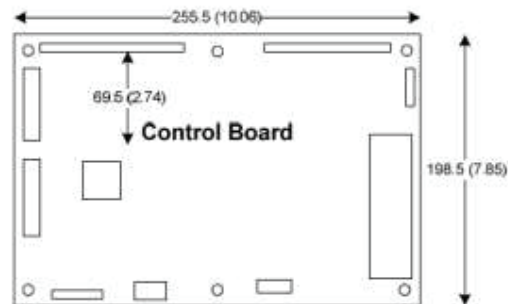
- PC tool interface: This RS-485 communication port allows the control to communicate with a personal computer running InPower software.

- Modbus RS-485 port: Allows the control to communicate with external devices such as PLCs using Modbus protocol.

Note - An RS-232 or USB to RS-485 converter is required for communication between PC and control.

- Networking: This RS-485 communication port allows connection from the control to the other Cummins products.

Mechanical Drawings



PowerCommand Human Machine Interface HMI320



Description

This control system includes an intuitive operator interface panel that allows for complete genset control as well as system metering, fault annunciation, configuration and diagnostics. The interface includes five genset status LED lamps with both internationally accepted symbols and English text to comply with customer's needs. The interface also includes an LED backlit LCD display with tactile feel soft-switches for easy operation and screen navigation. It is configurable for units of measurement and has adjustable screen contrast and brightness.

The *run/off/auto* switch function is integrated into the interface panel.

All data on the control can be viewed by scrolling through screens with the navigation keys. The control displays the current active fault and a time-ordered history of the five previous faults.

Features

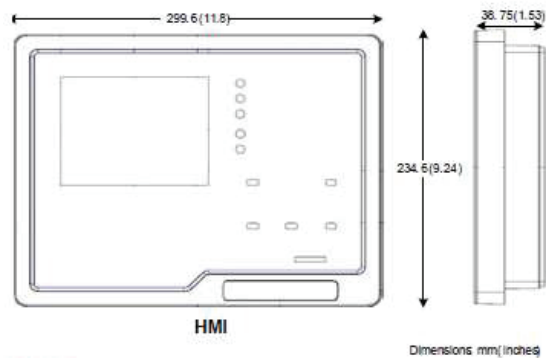
- LED indicating lamps:
 - Genset running
 - Remote start
 - Not in auto
 - Shutdown
 - Warning
 - Auto
 - Manual and stop
- 320 x 240 pixels graphic LED backlight LCD.
- Four tactile feel membrane switches for LCD defined operation. The functions of these switches are defined dynamically on the LCD.
- Seven tactile feel membrane switches dedicated screen navigation buttons for up, down, left, right, ok, home and cancel.
- Six tactile feel membrane switches dedicated to control for auto, stop, manual, manual start, fault reset and lamp test/panel lamps.

- Two tactile feel membrane switches dedicated to control of circuit breaker (where applicable).
- Allows for complete genset control setup.
- Certifications: Suitable for use on generator sets that are designed, manufactured, tested and certified to relevant UL, NFPA, ISO, IEC, Mil Std., CE and CSA standards.
- LCD languages supported: English, Spanish, French, German, Italian, Greek, Dutch, Portuguese, Finnish, Norwegian, Danish, Russian and Chinese Characters.

Communications connections include:

- PC tool interface - This RS-485 communication port allows the HMI to communicate with a personal computer running InPower.
- This RS-485 communication port allows the HMI to communicate with the main control board.

Mechanical Drawing



Software

InPower (beyond 6.5 version) is a PC-based software service tool that is designed to directly communicate to PowerCommand generator sets and transfer switches, to facilitate service and monitoring of these products.

Environment

The control is designed for proper operation without recalibration in ambient temperatures from -40 °C to +70 °C (-40 °F to 158 °F) and for storage from -55 °C to +80 °C (-67 °F to 176 °F). Control will operate with humidity up to 95%, non-condensing.

The HMI is designed for proper operation in ambient temperatures from -20 °C to +70 °C (-4 °F to 158 °F) and for storage from -30 °C to +80 °C (-22 °F to 176 °F).

The control board is fully encapsulated to provide superior resistance to dust and moisture. Display panel has a single membrane surface, which is impervious to effects of dust, moisture, oil and exhaust fumes. This panel uses a sealed membrane to provide long reliable service life in harsh environments.

The control system is specifically designed and tested for resistance to RFI/EMI and to resist effects of vibration to provide a long reliable life when mounted on a generator set. The control includes transient voltage surge suppression to provide compliance to referenced standards.

Certifications

PowerCommand meets or exceeds the requirements of the following codes and standards:

- NFPA 110 for level 1 and 2 systems.
- ISO 8528-4:2005 compliance, controls and switchgear (second edition)
- CE marking: The control system is suitable for use on generator sets to be CE-marked.
- EN50081-1,2 residential/light industrial emissions or industrial emissions.
- EN50082-1,2 residential/light industrial or industrial susceptibility.
- ISO 7637-2, level 2; DC supply surge voltage test.
- Mil Std 202C, Method 101 and ASTM B117: Salt fog test.
- UL 6200 recognized and suitable for use on UL 2200 Listed generator sets.
- CSA C282-M1999 compliance
- CSA 22.2 No. 14 M91 industrial controls.
- PowerCommand control systems and generator sets are designed and manufactured in ISO 9001 certified facilities.

Warranty

All components and subsystems are covered by an express limited one year warranty. Other optional and extended factory warranties and local distributor maintenance agreements are available.



For more information contact your local Cummins distributor
or visit power.cummins.com

Our energy working for you.™





Alternator data sheet

Frame size: **UC3G**

Characteristics								
Weights:	Wound stator assembly:	434 lb					197 kg	
	Rotor assembly:	465 lb					211 kg	
	Complete alternator:	1290 lb					585 kg	
Maximum speed:		2250 rpm						
Excitation current:	Full load:	2 Amps						
	No load:	0.5 Amps						
Insulation system:	Class H throughout							
1 Ø Ratings	(1.0 power factor)	60 Hz			50 Hz			
(Based on specific temperature rise at 40 °C ambient temperature)		Double delta	4 lead		Double delta			
		<u>120/240</u>	<u>120/240</u>		110-120 <u>220-240</u>			
125 °C rise ratings	kW/kVA	120/120	150/150		105/105			
105 °C rise ratings	kW/kVA	113/113	135/135		96/96			
3 Ø Ratings	(0.8 power factor)	Upper broad range		LBR*	347/600	Broad range		
(Based on specified temperature rise at 40 °C ambient temperature)		<u>120/208</u> <u>240/416</u>	<u>139/240</u> <u>277/480</u>	<u>190-208</u> <u>380-416</u>	<u>347/600</u>	<u>110/190</u> <u>220/380</u>	<u>120/208</u> <u>240/415</u>	<u>127/220</u> <u>254/440</u>
150 °C Rise ratings	kW	166	192	166	192	146	146	142
	kVA	108	240	208	240	182	182	178
125 °C Rise ratings	kW	160	180	160	180	140	140	137
	kVA	200	225	200	225	175	175	171
105 °C Rise ratings	kW	150	165	150	165	128	128	125
	kVA	188	206	188	206	160	160	156
80 °C Rise ratings	kW	130	140	130	140	111	111	108
	kVA	163	175	163	175	139	139	135
3 Ø Reactances	(per unit, ±10%)							
(Based on full load at 105 °C rise rating)								
Synchronous		2.34	1.93	1.75	1.61	1.99	1.67	1.45
Transient		0.20	0.17	0.15	0.14	0.17	0.14	0.12
Subtransient		0.13	0.11	0.10	0.10	0.12	0.10	0.09
Negative sequence		0.15	0.12	0.11	0.11	0.12	0.10	0.09
Zero sequence		0.09	0.08	0.06	0.06	0.08	0.06	0.06
3 Ø Motor starting								
Maximum kVA	(Shunt)	563	563	563		400		
(90% sustained voltage)	(PMG)	663	663	663		500		
Time constants	(Sec)							
Transient		0.038	0.038	0.038		0.038		
Subtransient		0.012	0.012	0.012		0.012		
Open circuit		1.000	1.000	1.000		1.000		
DC		0.010	0.010	0.010		0.010		



Alternator data sheet

Frame size: **UC3G**

Windings	(@ 20° C)				
Stator resistance	(Line to Line, Ohms)	0.0420	0.0340	0.0550	0.0420
Rotor resistance	(Ohms)	1.6600	1.6600	1.6600	1.6600
Number of leads		12	12	6	12

* Lower broad range 110/190 thru 120/208, 220/380 thru 240/416.



Prototype Test Supported Emergency/Standby Generator Sets Certification

Cummins Power Generation certifies that its commercial generator sets bearing the Prototype Test Supported (PTS) seal have been subjected to a design and development process that includes extensive prototype testing and evaluation. A PTS production model is engineered and manufactured according to documentation developed through comprehensive research, design and design verification.

Design verification is based on tests of preproduction prototype models manufactured specifically for prototype test purposes and not sold as new equipment. To be certified as a PTS model, the generator set must satisfy these prerequisites:

DESIGN - The PTS certified generator set must be designed specifically for emergency/standby applications that require high reliability and rapid response.

PROTOTYPE TESTING - Design suitability of the PTS certified generator set must be proven by tests on preproduction prototype models. The prototype test program is intended to:

1. Confirm the engine and generator have reserve capacity beyond rating to minimize the potential of damage or shutdown during steady state or transient loading conditions, including momentary overloads.
2. Demonstrate generator set, controls and accessories capability to perform reliably and compatibly in service during disturbances common in actual load circuits.
3. Verify the integrity of the generator and excitation system insulation systems and electrical components to withstand heating under rated load and transient overcurrent conditions.
4. Evaluate generator set mechanical and electrical strength to perform without damage during abnormal operating conditions, such as short circuits or out-of-phase paralleling. While operating at rated load, the generator set must be subjected to several 3-phase short circuits of 20 second duration. After the tests, the generator set is inspected to verify that no electrical or mechanical damage was incurred by any components.
5. Determine by endurance testing that no resonance conditions exist in the generator set or accessories that will cause premature failure of components on production units.
6. Investigate and identify failure modes to minimize the risk of any single component failure or human error that could lead to lack of essential electrical supply.
7. Provide a margin of safety, by actual trials, between the generator set component design and protection systems so that the components are not damaged before the protective devices activate a shutdown.

DOCUMENTATION AND SOFTWARE - The PTS certified generator set must be documented in a single drawing package with all components identified with Cummins Power Generation part numbers. A PTS test certificate must be created for each PTS generator set certifying the PTS testing performed.

QUALITY ASSURANCE - Engineering drawings, specifications and test requirements for a PTS certified generator set must be classified by components and assembly quality characteristics. A component and process inspection and test plan must be developed and maintained to measure product conformance to documentation requirements.

PRODUCTION MODEL TESTING - PTS certified generator sets must be subjected to complete production tests that demonstrate conformance to specifications at all rated conditions, including start-up, full load pickup and a performance run at full rated load and power factor.



Prototype Test Support (PTS) 60 Hz Test Summary



<u>Generator set models</u>	<u>Representative prototype</u>
C125N6	Model: C150N6
C150N6	Engine: QSJ8.9G-G2
	Alternator: UC27J

The following summarizes prototype testing conducted on the designated representative prototype of the specified models. This testing is conducted to verify the complete generator set electrical and mechanical design integrity. Prototype testing is conducted only on generator sets not sold as new equipment.

Maximum surge power: 156.4 kW
The generator set was evaluated to determine the stated maximum surge power.

Maximum motor starting: 220 kVA
The generator set was tested to simulate motor starting by applying the specified kVA load at low lagging power factor (0.4 or lower). With this load applied, the generator set recovered to a minimum of 90% rated voltage

Alternator temperature rise:
The highest rated temperature rise (120 °C) test result are reported as follows to verify that worst case temperature rises do not exceed allowable NEMA MG1 limits for class H insulation. Tests were conducted per IEEE 115, rise by resistance and embedded detector, with rated voltages. Only the highest temperatures are reported.

Location	Maximum Rise (°C)
Alternator Stator:	N/A
Alternator Rotor:	N/A
Exciter Stator:	N/A
Exciter Rotor:	N/A

Torsional analysis and testing:
The generator set with UC27J was tested to verify that the design is not subjected to harmful torsional stresses. A spectrum analysis of the transducer output was conducted over the speed range of 1650 to 1950 RPM.

Cooling system: 50 °C ambient
0.5 in H2O restriction

The cooling system was tested to determine ambient temperature and static restriction capabilities. The test was performed at full rated load elevated ambient temperature under static restriction conditions.

Durability:
The generator set was subjected to a 1500 hour endurance test replicating field duty cycles operating at variable load up to the standby rating based upon MIL-STD-705 to verify structural soundness and durability of the design.

Steady state performance:
The generator set was tested to verify steady state operating performance. It was within the specified maximum limits.

Voltage regulation:	± 1%
Random voltage variation:	± 1%
Frequency regulation:	Isochronous
Random frequency variation:	± 0.5%

Transient performance:
The generator set was tested with the listed alternator to verify single step loading capability as required by NFPA 110. Voltage and frequency response on load addition or rejection were evaluated. The following results were recorded at 0.8 power factor:

Full load acceptance:

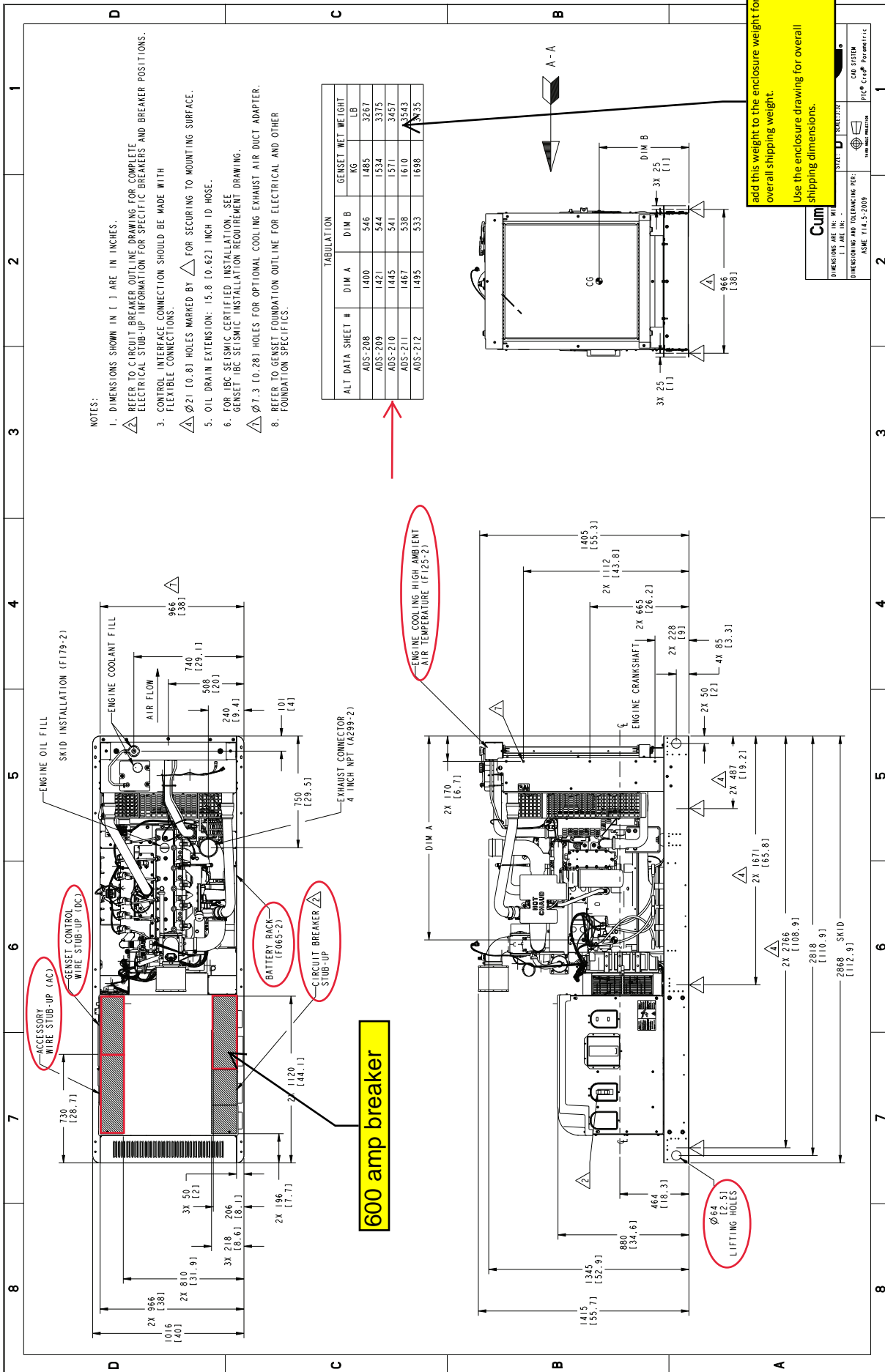
Voltage dip:	26.9%
Recovery time:	5.3 seconds
Frequency dip:	16.2%
Recovery time:	6.3 seconds

Full load rejection:

Voltage rise:	12.5%
Recovery time:	2.2 seconds
Frequency rise:	15.7%
Recovery time:	4.5 seconds

Harmonic analysis:
(per MIL-STD-705B, Method 601.4)

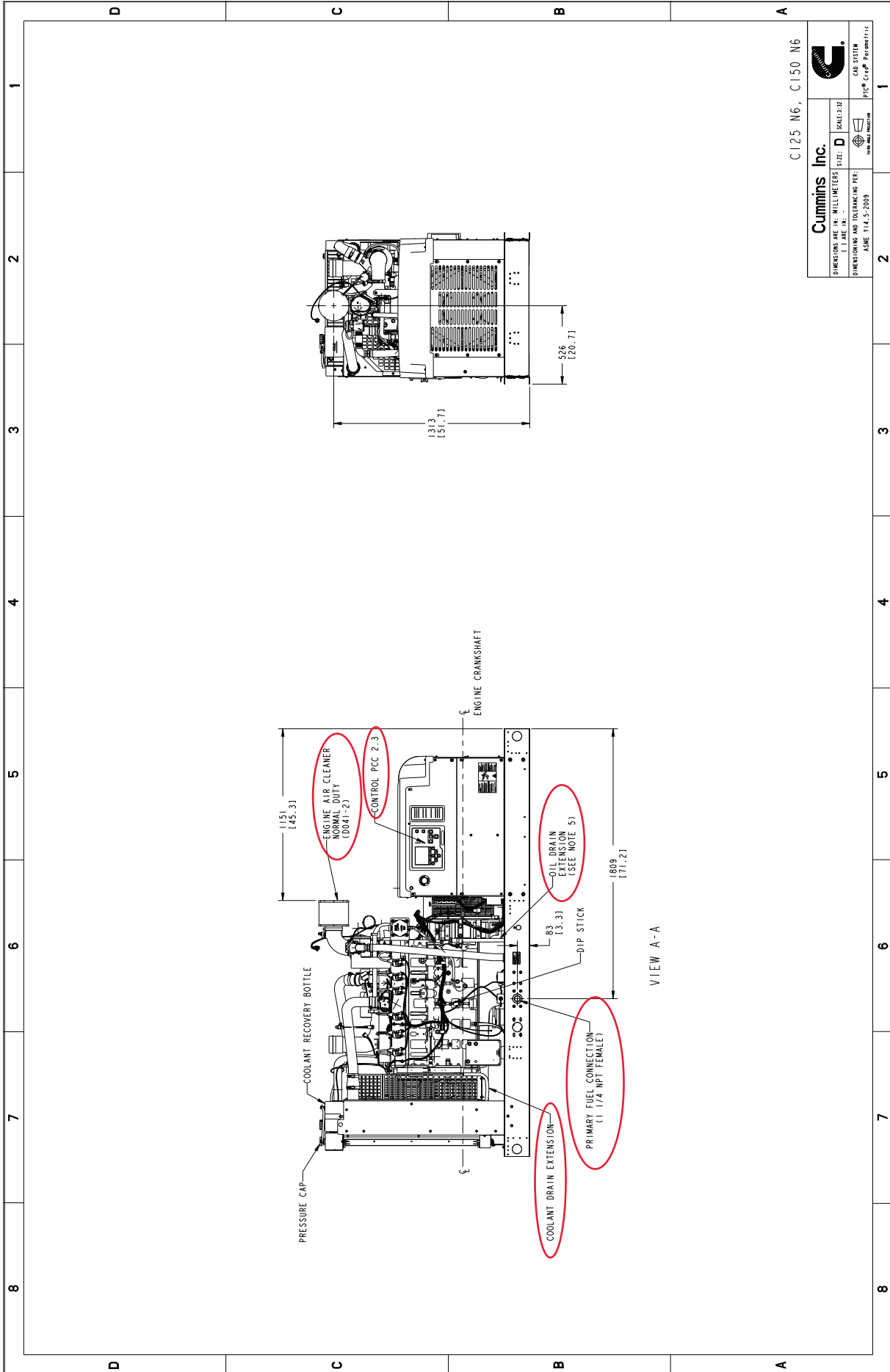
Harmonic	<u>Line to Line</u>		<u>Line to Neutral</u>	
	<u>No load</u>	<u>Full load</u>	<u>No load</u>	<u>Full load</u>
3	0.0	0.1	0.0	0.1
5	0.8	1.2	0.8	1.2
7	0.7	2.2	0.7	2.1
9	0.0	0.0	0.0	0.0
11	0.2	0.3	0.2	0.3
13	0.2	0.4	0.2	0.4
15	0.0	0.0	0.0	0.1



Part Number: **A055J588** Part Revision: **C**
 Part Name: **OUTLINE, GENSET**
 Drawing Category: **Detail State: Released** Sheet 1 of 3

This document (and the information shown thereon) is **Confidential and Proprietary** and shall not be disclosed to others in hard copy or electronic form, reproduced by any means, or used for any purpose without written consent of Cummins Inc.

Cummins Data Classification: **Cummins Confidential**



Part Number: **A055J588** Part Revision: **C**
 Part Name: **OUTLINE, GENSET**
 Drawing Category: **Detail State: Released** Sheet 2 of 3

This document (and the information shown thereon) is **Confidential and Proprietary** and shall not be disclosed to others in hard copy or electronic form, reproduced by any means, or used for any purpose without written consent of Cummins Inc.

Cummins Data Classification: **Cummins Confidential**



Data Sheet

Circuit Breakers

Description

This Data sheet provides circuit breaker manufacturer part numbers and specifications. The Circuit breaker box description is the rating of that breaker box installation on a Cummins Generator. Please refer to the website of the circuit breaker manufacturer for breaker specific ratings and technical information.

Applicable Models

Engine	Models					
Kubota	C10D6	C15D6	C20D6			
QSJ2.4	C20N6	C25N6	C30N6	C30N6H	C36N6	C36N6H
	C40N6	C40N6H	C50N6H	C60N6H		
B3.3	C25D6	C30D6	C35D6	C40D6	C50D6	C60D6
QSJ5.9G	C45N6	C50N6	C60N6	C70N6	C80N6	C100N6
QSJ8.9G	C125N6	C150N6				
QSB5	DSFAC	DSFAD	DSFAE	C50D6C	C60D6C	C80D6C
	C100D6C	C125D6C				
QSB7	DSGAA	DSGAB	DSGAC	DSGAD	DSGAE	
		C125D6D	C150D6D	C175D6D	C200D6D	
QSL9	DSHAD	DQDAA	DQDAB	DQDAC		
QSM11	DQHAB					
QSX15	DFEJ	DFEK				

Instructions

1. Locate the circuit breaker feature code or part number and use the charts below to find the corresponding manufacturer circuit breaker catalog number.
2. Use the first letter of the circuit breaker catalog number to determine the "frame" of the breaker. If the first letter is an "N", use the second letter. Then follow the corresponding website link from the table below to find the breaker catalog number description.

Please refer to the catalog numbering systems page, which is given in the chart, to understand the nomenclature of the catalog number.

Frame	Catalog name*	Catalog number description page(s)
P	0612CT0101 http://www.schneider-electric.us/en/download/document/0612CT0101/	16-17
H, J, and L	0611CT1001 http://www.schneider-electric.us/en/download/document/0611CT1001/	8-9
Q	0734CT0201 http://www.schneider-electric.us/en/download/document/0734CT0201/	4

*The following link may also be used to search specifically by the breaker part number or for the catalog name listed above. <http://products.schneider-electric.us/technical-library/>

3. Search the catalog by using the first 3 letters of the breaker catalog number and the first 5 numbers to find information such as trip curves, accessories, and dimensional details regarding the circuit breaker.

*If the catalog number starts with "N", skip the N and begin your search with the second letter.

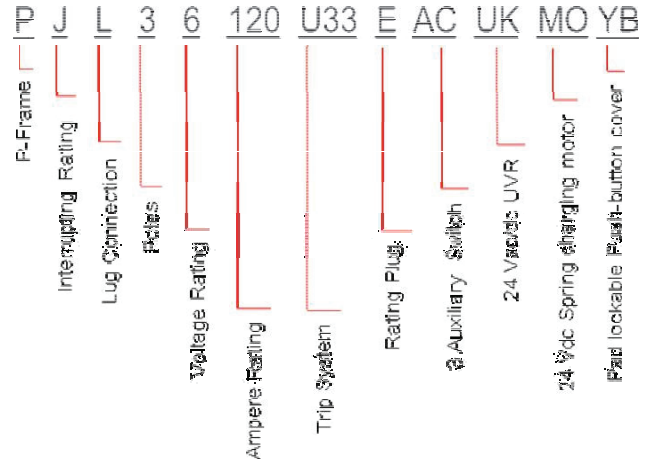
*If the first 3 letters are "PJP," the search will not work. You will need to start with just "PJ" and use the description pages to obtain the information you are looking for on the "PJP."

Example

After finding your circuit breaker catalog number to be "PJL36120U33EACUKMOYB," navigate to the P-frame catalog by using the link provided.

Look at pages 16-17 of the pdf catalog to find the nomenclature of the breaker.

Search the P-frame spec sheet using the search "PJL36120."

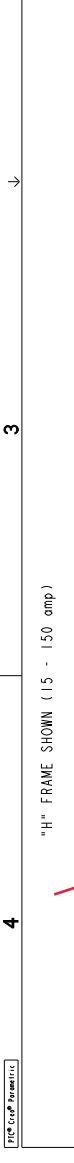


Feature Code	Breaker Box Description	Cummins Part #	Manufacturer	Breaker Catalog Number	Trip Unit	Plug Type
KX27-2	CB, Loc B, 70A-250A, 3P, LSI, 600VAC, 80%, UL	A050J727	Schneider Electric	JDL36250CU33X	MicroLogic 3.2S	N/A
KX28-2	CB, Loc B, 70A-250A, 3P, LSI, 600VAC, 100%, UL	A050J727	Schneider Electric	JDL36250CU33X	MicroLogic 3.2S	N/A
KX29-2	CB, Loc C, 70A-250A, 3P, LSI, 600VAC, 100%, UL	A050J727	Schneider Electric	JDL36250CU33X	MicroLogic 3.2S	N/A
KX30-2	CB, Loc A, 125A-400A, 3P, LSI, 600VAC, 100%, UL	A051D115	Schneider Electric	LGL36400CU33X	MicroLogic 3.3S	N/A
KX31-2	CB, Loc B, 125A-400A, 3P, LSI, 600VAC, 100%, UL	A051D115	Schneider Electric	LGL36400CU33X	MicroLogic 3.3S	N/A
KX32-2	CB, Loc A, 200A-600A, 3P, LSI, 600VAC, 80%, UL	A044T468	Schneider Electric	NLGL36600U33X-600A	MicroLogic 3.3S	N/A
KX33-2	CB, Loc B, 200A-600A, 3P, LSI, 600VAC, 80%, UL	A044T468	Schneider Electric	NLGL36600U33X-600A	MicroLogic 3.3S	N/A
KX34-2	CB, Loc C, 15A, 3P, 600VAC, 80%, UL	A043L506	Schneider Electric	HDL36015	Thermal Magnetic	N/A
KX35-2	CB, Loc C, 20A, 3P, 600VAC, 80%, UL	A043L480	Schneider Electric	HDL36020	Thermal Magnetic	N/A
KX36-2	CB, Loc C, 25A, 3P, 600VAC, 80%, UL	A043L508	Schneider Electric	HDL36025	Thermal Magnetic	N/A
KX37-2	CB, Loc C, 30A, 3P, 600VAC, 80%, UL	A043L475	Schneider Electric	HDL36030	Thermal Magnetic	N/A
KX38-2	CB, Loc C, 40A, 3P, 600VAC, 80%, UL	A043L464	Schneider Electric	HDL36040	Thermal Magnetic	N/A
KX39-2	CB, Loc C, 50A, 3P, 600VAC, 80%, UL	A043L461	Schneider Electric	HDL36050	Thermal Magnetic	N/A
KX40-2	CB, Loc C, 60A, 3P, 600VAC, 80%, UL	A043L459	Schneider Electric	HDL36060	Thermal Magnetic	N/A
KX41-2	CB, Loc C, 70A, 3P, 600VAC, 80%, UL	A043L451	Schneider Electric	HDL36070	Thermal Magnetic	N/A
KX42-2	CB, Loc C, 80A, 3P, 600VAC, 80%, UL	A043L012	Schneider Electric	HDL36080	Thermal Magnetic	N/A

REV	DATE	BY	CHKD	DESCRIPTION
1	01/11/11	W. J. LARSON	J. L. JENSEN	REVISED TO INCLUDE CIRCULAR BREAKER
2	01/11/11	W. J. LARSON	J. L. JENSEN	REVISED TO INCLUDE CIRCULAR BREAKER
3	01/11/11	W. J. LARSON	J. L. JENSEN	REVISED TO INCLUDE CIRCULAR BREAKER
4	01/11/11	W. J. LARSON	J. L. JENSEN	REVISED TO INCLUDE CIRCULAR BREAKER

NOTES:
 △ NEUTRAL LUG (1) #14-2/0.
 △ NEUTRAL LUG (1) #14-1/0.
 △ NEUTRAL LUG (1) #8-3/50 kcmil.
 △ NEUTRAL LUG (2) #2-600 kcmil OR (4) 1/0-250 kcmil.

FRAME	LUG	WIRE RANGE	WIRE STRIP LENGTH	CB LUG TORQUE
H-FRAME THERMAL-MAGNETIC 15-150 AMP 80A RATED	AL1590D	(1) AL #14 - 3/0 AWG (1) CU #14 - 3/0 AWG	0.65 inch	#14 - 810-50 lb-in (16.0 Nm) #8 - 3/0 120 lb-in (14.0 Nm)
	AL1750D	(1) AL #4 - 4/0 AWG (1) CU #4 - 4/0 AWG	1.00 inch	225 lb-in (26.0 Nm)
J-FRAME THERMAL-MAGNETIC 80A RATED	AL250JD	(1) AL 3/0 - 350 kcmil (1) CU 3/0 - 350 kcmil	1.00 inch	225 lb-in (26.0 Nm)
	CU250JD	(1) CU 1/0 - 300 kcmil	1.00 inch	250 lb-in (28.0 Nm)
L-FRAME (400) & LST ELECTRONIC TRIP ADJUSTABLE TRIP 10-250 AMP 100A RATED, COPPER CONDUCTORS ONLY	AL400LH3	(1) AL #2 - 500 kcmil (1) CU #2 - 600 kcmil	1.20 inch	442 lb-in (50 Nm)
	AL600LS2K3	(2) CU 2/0 - 500 kcmil (1) AL 3/0 - 500 kcmil (1) CU 3/0 - 500 kcmil	(1) 1.20 inch (1) 2.40 inch	442 lb-in (50 Nm)
L-FRAME (600) & LST ELECTRONIC TRIP ADJUSTABLE TRIP 15-400 AMP 100A RATED, COPPER CONDUCTORS ONLY	AL600LS2K3	(2) AL 2/0 - 500 kcmil (2) CU 2/0 - 500 kcmil	(1) 1.20 inch (1) 2.40 inch	442 lb-in (50 Nm)
	AL800LS2K3	(3) AL 3/0 - 500 kcmil (3) CU 3/0 - 500 kcmil	(3) 1.20 inch	442 lb-in (50 Nm)



SECTION A-A
SCALE 1/2"

KIT PART NUMBER	MODELS AFFECTED	ENCLOSURES AFFECTED
A060M22	C125 MC-C150 MC	OPEN ONLY
A060M22	ANY RATING	POS B
A060M22	ANY RATING	POS C
A060M22	ANY RATING	600A OR BELOW
A060M22	ANY RATING	400A OR BELOW
A060M22	ANY RATING	250A OR BELOW

SHUNT TRIP (M3) P/N A0437860
1 12 VDC GREEN < 5 WATTS 10 AMP 1F-RUSH
2 24 VDC GREEN < 5 WATTS 10 AMP 1F-RUSH
3 24 VDC GREEN < 5 WATTS 10 AMP 1F-RUSH

KIT PART NUMBER	MODELS AFFECTED	ENCLOSURES AFFECTED
A060M22	C125 MC-C150 MC	OPEN ONLY
A060M22	ANY RATING	POS B
A060M22	ANY RATING	POS C
A060M22	ANY RATING	600A OR BELOW
A060M22	ANY RATING	400A OR BELOW
A060M22	ANY RATING	250A OR BELOW

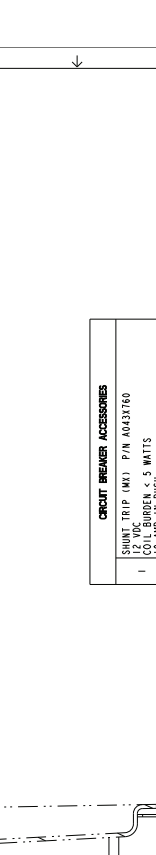
SECTION A-A
SCALE 1/2"

FRAME	LUG	WIRE RANGE	WIRE STRIP LENGTH	CB LUG TORQUE
H-FRAME THERMAL-MAGNETIC 15-150 AMP 80A RATED	AL1590D	(1) AL #14 - 3/0 AWG (1) CU #14 - 3/0 AWG	0.65 inch	#14 - 810-50 lb-in (16.0 Nm) #8 - 3/0 120 lb-in (14.0 Nm)
	AL1750D	(1) AL #4 - 4/0 AWG (1) CU #4 - 4/0 AWG	1.00 inch	225 lb-in (26.0 Nm)
J-FRAME THERMAL-MAGNETIC 80A RATED	AL250JD	(1) AL 3/0 - 350 kcmil (1) CU 3/0 - 350 kcmil	1.00 inch	225 lb-in (26.0 Nm)
	CU250JD	(1) CU 1/0 - 300 kcmil	1.00 inch	250 lb-in (28.0 Nm)
L-FRAME (400) & LST ELECTRONIC TRIP ADJUSTABLE TRIP 10-250 AMP 100A RATED, COPPER CONDUCTORS ONLY	AL400LH3	(1) AL #2 - 500 kcmil (1) CU #2 - 600 kcmil	1.20 inch	442 lb-in (50 Nm)
	AL600LS2K3	(2) CU 2/0 - 500 kcmil (1) AL 3/0 - 500 kcmil (1) CU 3/0 - 500 kcmil	(1) 1.20 inch (1) 2.40 inch	442 lb-in (50 Nm)
L-FRAME (600) & LST ELECTRONIC TRIP ADJUSTABLE TRIP 15-400 AMP 100A RATED, COPPER CONDUCTORS ONLY	AL600LS2K3	(2) AL 2/0 - 500 kcmil (2) CU 2/0 - 500 kcmil	(1) 1.20 inch (1) 2.40 inch	442 lb-in (50 Nm)
	AL800LS2K3	(3) AL 3/0 - 500 kcmil (3) CU 3/0 - 500 kcmil	(3) 1.20 inch	442 lb-in (50 Nm)

SHUNT TRIP (M3) P/N A0437860
1 12 VDC GREEN < 5 WATTS 10 AMP 1F-RUSH
2 24 VDC GREEN < 5 WATTS 10 AMP 1F-RUSH
3 24 VDC GREEN < 5 WATTS 10 AMP 1F-RUSH

KIT PART NUMBER	MODELS AFFECTED	ENCLOSURES AFFECTED
A060M22	C125 MC-C150 MC	OPEN ONLY
A060M22	ANY RATING	POS B
A060M22	ANY RATING	POS C
A060M22	ANY RATING	600A OR BELOW
A060M22	ANY RATING	400A OR BELOW
A060M22	ANY RATING	250A OR BELOW

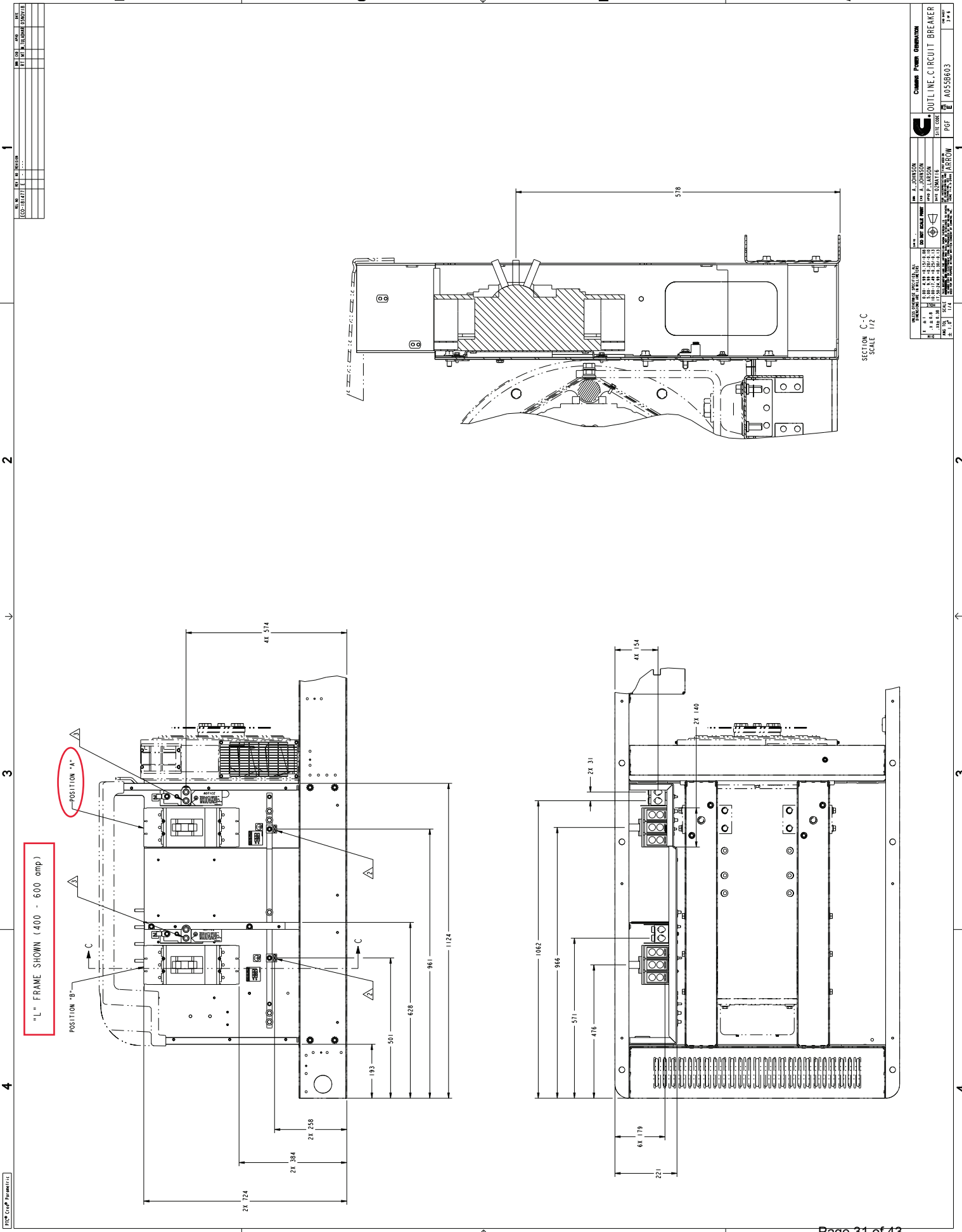
SECTION A-A
SCALE 1/2"



SHUNT TRIP (M3) P/N A0437860
1 12 VDC GREEN < 5 WATTS 10 AMP 1F-RUSH
2 24 VDC GREEN < 5 WATTS 10 AMP 1F-RUSH
3 24 VDC GREEN < 5 WATTS 10 AMP 1F-RUSH

KIT PART NUMBER	MODELS AFFECTED	ENCLOSURES AFFECTED
A060M22	C125 MC-C150 MC	OPEN ONLY
A060M22	ANY RATING	POS B
A060M22	ANY RATING	POS C
A060M22	ANY RATING	600A OR BELOW
A060M22	ANY RATING	400A OR BELOW
A060M22	ANY RATING	250A OR BELOW

SECTION A-A
SCALE 1/2"



REV.	DATE	BY	CHKD.	DESCRIPTION
1	08/11/11
2	08/11/11
3	08/11/11
4	08/11/11

DESIGNED BY	W. J. JOHNSON	CHECKED BY	W. J. JOHNSON
DRAWN BY	W. J. JOHNSON	DATE	08/11/11
SCALE	AS SHOWN	PROJECT NO.	...
TITLE CODE	...	PGF	...
DATE	08/11/11
...

SECTION C-C
SCALE 1/2"

COMPANY	CHRYSLER FINANCIAL SERVICES
PROJECT	...
...	...
...	...
...	...
...	...

...	...
...	...
...	...
...	...
...	...
...	...

...	...
...	...
...	...
...	...
...	...
...	...

...	...
...	...
...	...
...	...
...	...
...	...

...	...
...	...
...	...
...	...
...	...
...	...

...	...
...	...
...	...
...	...
...	...
...	...

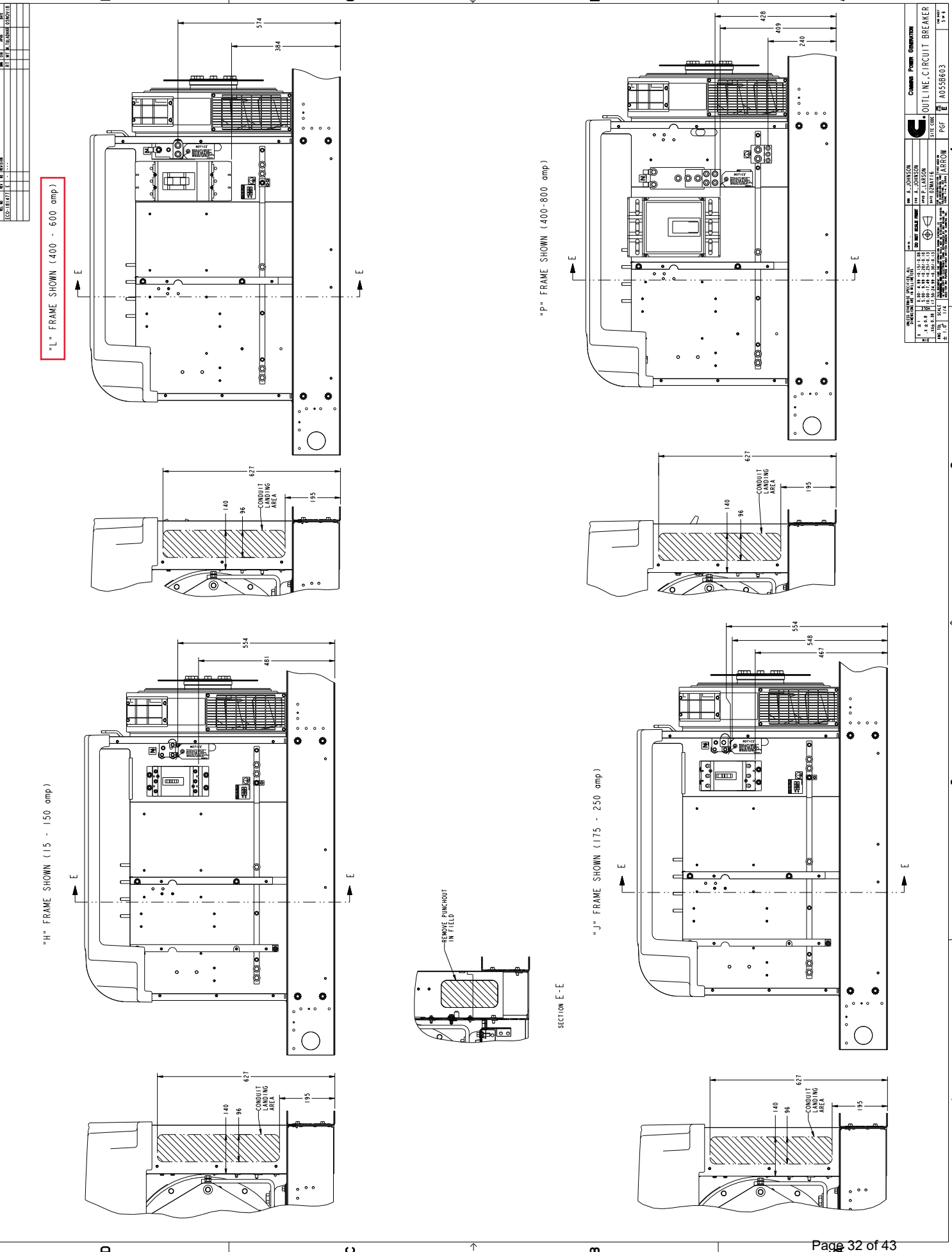
...	...
...	...
...	...
...	...
...	...
...	...

...	...
...	...
...	...
...	...
...	...
...	...

...	...
...	...
...	...
...	...
...	...
...	...

...	...
...	...
...	...
...	...
...	...
...	...

...	...
...	...
...	...
...	...
...	...
...	...

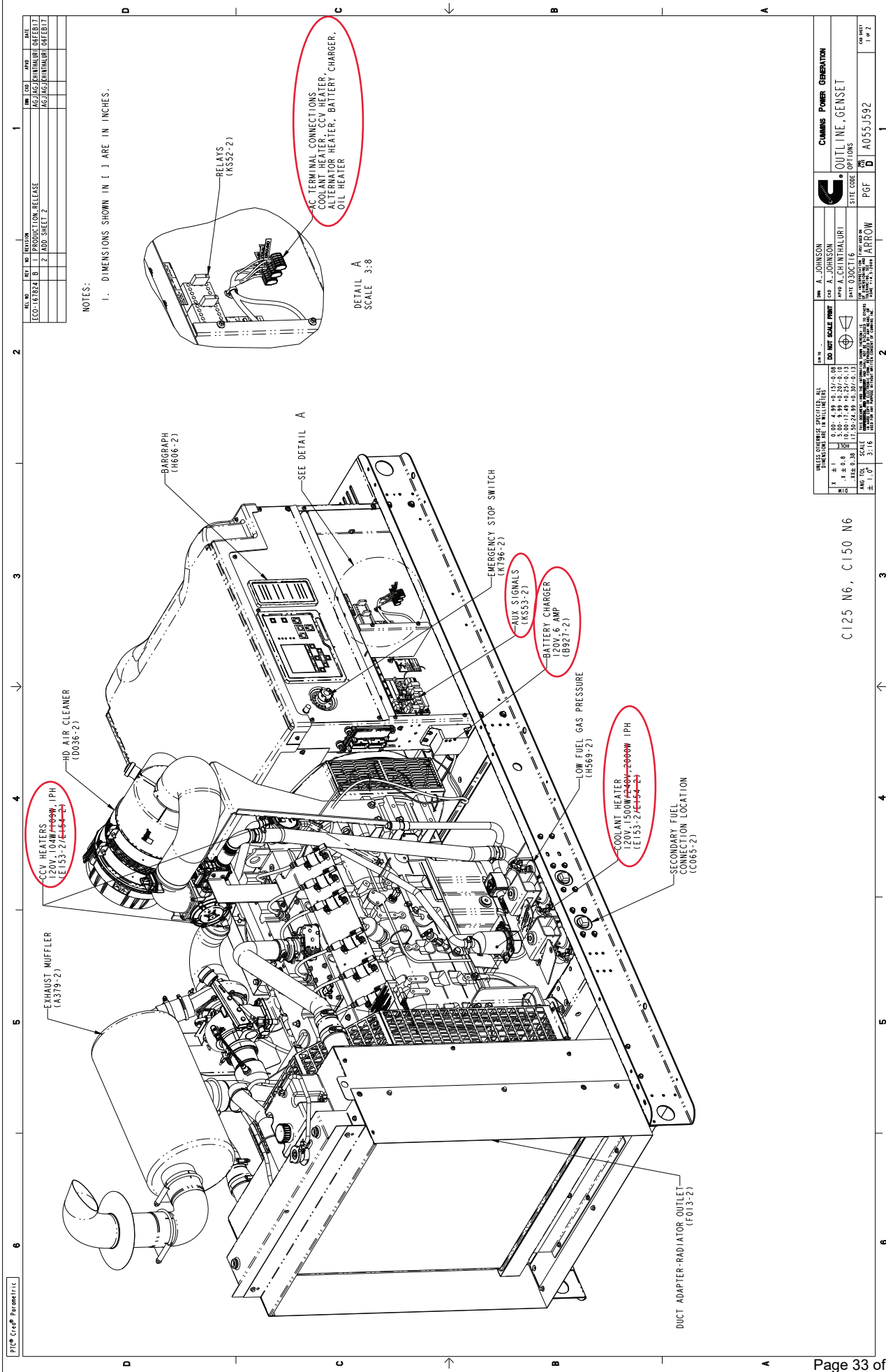


REV.	DATE	BY	CHKD.
001	10/24/11	W. J. LARSON	W. J. LARSON
002	11/14/11	W. J. LARSON	W. J. LARSON
003	11/14/11	W. J. LARSON	W. J. LARSON
004	11/14/11	W. J. LARSON	W. J. LARSON
005	11/14/11	W. J. LARSON	W. J. LARSON

		CUMMINS POWER OPERATOR OUTLINE, CIRCUIT BREAKER
TITLE CODE 1011	PGF 1011	PART NO. A055B603
DESIGNER W. J. LARSON	CHECKER W. J. LARSON	DATE 11/14/11
DRAWING NO. 1011	SCALE 1:1	PROJECT NO. 1011
MATERIALS 1. 304 SS 2. 304 SS 3. 304 SS 4. 304 SS 5. 304 SS 6. 304 SS 7. 304 SS 8. 304 SS 9. 304 SS 10. 304 SS 11. 304 SS 12. 304 SS 13. 304 SS 14. 304 SS 15. 304 SS 16. 304 SS 17. 304 SS 18. 304 SS 19. 304 SS 20. 304 SS 21. 304 SS 22. 304 SS 23. 304 SS 24. 304 SS 25. 304 SS 26. 304 SS 27. 304 SS 28. 304 SS 29. 304 SS 30. 304 SS 31. 304 SS 32. 304 SS 33. 304 SS 34. 304 SS 35. 304 SS 36. 304 SS 37. 304 SS 38. 304 SS 39. 304 SS 40. 304 SS 41. 304 SS 42. 304 SS 43. 304 SS 44. 304 SS 45. 304 SS 46. 304 SS 47. 304 SS 48. 304 SS 49. 304 SS 50. 304 SS 51. 304 SS 52. 304 SS 53. 304 SS 54. 304 SS 55. 304 SS 56. 304 SS 57. 304 SS 58. 304 SS 59. 304 SS 60. 304 SS 61. 304 SS 62. 304 SS 63. 304 SS 64. 304 SS 65. 304 SS 66. 304 SS 67. 304 SS 68. 304 SS 69. 304 SS 70. 304 SS 71. 304 SS 72. 304 SS 73. 304 SS 74. 304 SS 75. 304 SS 76. 304 SS 77. 304 SS 78. 304 SS 79. 304 SS 80. 304 SS 81. 304 SS 82. 304 SS 83. 304 SS 84. 304 SS 85. 304 SS 86. 304 SS 87. 304 SS 88. 304 SS 89. 304 SS 90. 304 SS 91. 304 SS 92. 304 SS 93. 304 SS 94. 304 SS 95. 304 SS 96. 304 SS 97. 304 SS 98. 304 SS 99. 304 SS 100. 304 SS	APPROVED W. J. LARSON 11/14/11	

Regulatory Review and Approval is required prior to changing this item per PGG 1-01-01-116. This item impacts compliance with these External Regulations: UL, CSA

Drawing Name: A055B604
 Revision: E
 Part Name: A055B603
 ECO-181477
 Sheet 5 of 7



NOTES:
1. DIMENSIONS SHOWN IN [] ARE IN INCHES.

DETAIL A
SCALE 3:8

UNLESS OTHERWISE SPECIFIED, ALL DIMENSIONS ARE IN MILLIMETERS		DIM. SCALE PRINT		CUMMINS POWER GENERATION	
1	0.00-4.99	1:1	AS SHOWN	DESIGNER	A. JOHNSON
2	5.00-9.99	2:1	AS SHOWN	DRAWN	A. JOHNSON
3	10.00-14.99	3:1	AS SHOWN	CHECKED	A. JOHNSON
4	15.00-24.99	4:1	AS SHOWN	APPROVED	A. JOHNSON
5	25.00-49.99	5:1	AS SHOWN	DATE	10/16/03
6	50.00-99.99	6:1	AS SHOWN	SCALE	AS SHOWN
7	100.00-149.99	7:1	AS SHOWN	PROJECT	ECO-167824
8	150.00-249.99	8:1	AS SHOWN	PGF	A055J592
9	250.00-499.99	9:1	AS SHOWN	ARROW	
10	500.00-999.99	10:1	AS SHOWN		
11	1000.00-1499.99	11:1	AS SHOWN		
12	1500.00-2499.99	12:1	AS SHOWN		
13	2500.00-4999.99	13:1	AS SHOWN		
14	5000.00-9999.99	14:1	AS SHOWN		
15	10000.00-14999.99	15:1	AS SHOWN		
16	15000.00-24999.99	16:1	AS SHOWN		
17	25000.00-49999.99	17:1	AS SHOWN		
18	50000.00-99999.99	18:1	AS SHOWN		
19	100000.00-149999.99	19:1	AS SHOWN		
20	150000.00-249999.99	20:1	AS SHOWN		
21	250000.00-499999.99	21:1	AS SHOWN		
22	500000.00-999999.99	22:1	AS SHOWN		
23	1000000.00-1499999.99	23:1	AS SHOWN		
24	1500000.00-2499999.99	24:1	AS SHOWN		
25	2500000.00-4999999.99	25:1	AS SHOWN		
26	5000000.00-9999999.99	26:1	AS SHOWN		
27	10000000.00-14999999.99	27:1	AS SHOWN		
28	15000000.00-24999999.99	28:1	AS SHOWN		
29	25000000.00-49999999.99	29:1	AS SHOWN		
30	50000000.00-99999999.99	30:1	AS SHOWN		
31	100000000.00-149999999.99	31:1	AS SHOWN		
32	150000000.00-249999999.99	32:1	AS SHOWN		
33	250000000.00-499999999.99	33:1	AS SHOWN		
34	500000000.00-999999999.99	34:1	AS SHOWN		
35	1000000000.00-1499999999.99	35:1	AS SHOWN		
36	1500000000.00-2499999999.99	36:1	AS SHOWN		
37	2500000000.00-4999999999.99	37:1	AS SHOWN		
38	5000000000.00-9999999999.99	38:1	AS SHOWN		
39	10000000000.00-14999999999.99	39:1	AS SHOWN		
40	15000000000.00-24999999999.99	40:1	AS SHOWN		
41	25000000000.00-49999999999.99	41:1	AS SHOWN		
42	50000000000.00-99999999999.99	42:1	AS SHOWN		
43	100000000000.00-149999999999.99	43:1	AS SHOWN		
44	150000000000.00-249999999999.99	44:1	AS SHOWN		
45	250000000000.00-499999999999.99	45:1	AS SHOWN		
46	500000000000.00-999999999999.99	46:1	AS SHOWN		
47	1000000000000.00-1499999999999.99	47:1	AS SHOWN		
48	1500000000000.00-2499999999999.99	48:1	AS SHOWN		
49	2500000000000.00-4999999999999.99	49:1	AS SHOWN		
50	5000000000000.00-9999999999999.99	50:1	AS SHOWN		
51	10000000000000.00-14999999999999.99	51:1	AS SHOWN		
52	15000000000000.00-24999999999999.99	52:1	AS SHOWN		
53	25000000000000.00-49999999999999.99	53:1	AS SHOWN		
54	50000000000000.00-99999999999999.99	54:1	AS SHOWN		
55	100000000000000.00-149999999999999.99	55:1	AS SHOWN		
56	150000000000000.00-249999999999999.99	56:1	AS SHOWN		
57	250000000000000.00-499999999999999.99	57:1	AS SHOWN		
58	500000000000000.00-999999999999999.99	58:1	AS SHOWN		
59	1000000000000000.00-1499999999999999.99	59:1	AS SHOWN		
60	1500000000000000.00-2499999999999999.99	60:1	AS SHOWN		
61	2500000000000000.00-4999999999999999.99	61:1	AS SHOWN		
62	5000000000000000.00-9999999999999999.99	62:1	AS SHOWN		
63	10000000000000000.00-14999999999999999.99	63:1	AS SHOWN		
64	15000000000000000.00-24999999999999999.99	64:1	AS SHOWN		
65	25000000000000000.00-49999999999999999.99	65:1	AS SHOWN		
66	50000000000000000.00-99999999999999999.99	66:1	AS SHOWN		
67	100000000000000000.00-149999999999999999.99	67:1	AS SHOWN		
68	150000000000000000.00-249999999999999999.99	68:1	AS SHOWN		
69	250000000000000000.00-499999999999999999.99	69:1	AS SHOWN		
70	500000000000000000.00-999999999999999999.99	70:1	AS SHOWN		
71	1000000000000000000.00-1499999999999999999.99	71:1	AS SHOWN		
72	1500000000000000000.00-2499999999999999999.99	72:1	AS SHOWN		
73	2500000000000000000.00-4999999999999999999.99	73:1	AS SHOWN		
74	5000000000000000000.00-9999999999999999999.99	74:1	AS SHOWN		
75	10000000000000000000.00-14999999999999999999.99	75:1	AS SHOWN		
76	15000000000000000000.00-24999999999999999999.99	76:1	AS SHOWN		
77	25000000000000000000.00-49999999999999999999.99	77:1	AS SHOWN		
78	50000000000000000000.00-99999999999999999999.99	78:1	AS SHOWN		
79	100000000000000000000.00-149999999999999999999.99	79:1	AS SHOWN		
80	150000000000000000000.00-249999999999999999999.99	80:1	AS SHOWN		
81	250000000000000000000.00-499999999999999999999.99	81:1	AS SHOWN		
82	500000000000000000000.00-999999999999999999999.99	82:1	AS SHOWN		
83	1000000000000000000000.00-1499999999999999999999.99	83:1	AS SHOWN		
84	1500000000000000000000.00-2499999999999999999999.99	84:1	AS SHOWN		
85	2500000000000000000000.00-4999999999999999999999.99	85:1	AS SHOWN		
86	5000000000000000000000.00-9999999999999999999999.99	86:1	AS SHOWN		
87	10000000000000000000000.00-14999999999999999999999.99	87:1	AS SHOWN		
88	15000000000000000000000.00-24999999999999999999999.99	88:1	AS SHOWN		
89	25000000000000000000000.00-49999999999999999999999.99	89:1	AS SHOWN		
90	50000000000000000000000.00-99999999999999999999999.99	90:1	AS SHOWN		
91	100000000000000000000000.00-149999999999999999999999.99	91:1	AS SHOWN		
92	150000000000000000000000.00-249999999999999999999999.99	92:1	AS SHOWN		
93	250000000000000000000000.00-499999999999999999999999.99	93:1	AS SHOWN		
94	500000000000000000000000.00-999999999999999999999999.99	94:1	AS SHOWN		
95	1000000000000000000000000.00-1499999999999999999999999.99	95:1	AS SHOWN		
96	1500000000000000000000000.00-2499999999999999999999999.99	96:1	AS SHOWN		
97	2500000000000000000000000.00-4999999999999999999999999.99	97:1	AS SHOWN		
98	5000000000000000000000000.00-9999999999999999999999999.99	98:1	AS SHOWN		
99	10000000000000000000000000.00-14999999999999999999999999.99	99:1	AS SHOWN		
100	15000000000000000000000000.00-24999999999999999999999999.99	100:1	AS SHOWN		

C125 N6, C150 N6



Sound Pressure Level @ 7 meters, dB(A)

See notes 1-6 listed below

Configuration	Exhaust System	Position (Note 1)								8 Position Average
		1	2	3	4	5	6	7	8	
Standard – Unhoused	Infinite Exhaust	79.5	82.2	82.6	83.9	79.3	82.6	82.5	81.7	82.0
F216-2 Weather Protective Aluminium	Mounted	82.0	80.6	76.2	81.0	79.2	85.4	79.4	82.8	81.6
F231-2 Sound Attenuated Level 1, Aluminium	Mounted	81.1	76.3	71.9	72.8	72.2	73.0	71.5	76.1	75.7
F217-2 Sound Attenuated Level 2, Aluminium	Mounted	72.8	72.5	69.3	71.5	70.9	71.3	69.4	71.8	71.3

Sound Power Level, dB(A)

See notes 2-4, 7 and 8 listed below

Configuration	Exhaust System	Octave Band Center Frequency (Hz)										Overall Sound Power Level
		31.5	63	125	250	500	1000	2000	4000	8000	16000	
Standard – Unhoused	Infinite Exhaust	59.0	73.8	86.0	94.7	103.0	103.9	104.3	103.0	100.1	89.5	110.2
F216-2 Weather Protective Aluminium	Mounted	63.2	83.3	92.1	99.5	103.7	103.7	104.0	103.9	96.5	81.9	110.5
F231-2 Sound Attenuated Level 1, Aluminium	Mounted	62.2	77.2	87.2	92.4	96.2	97.0	96.5	94.3	96.7	80.0	103.7
F217-2 Sound Attenuated Level 2, Aluminium	Mounted	62.6	76.4	86.3	90.2	93.1	92.1	90.6	88.8	89.2	75.3	99.0

Exhaust Sound Power Level, dB(A)

See notes 2 & 9 listed below

Open Exhaust (No Muffler) @ Rated Load	Octave Band Center Frequency (Hz)										Overall Sound Power Level
	31.5	63	125	250	500	1000	2000	4000	8000	16000	
	56.0	89.6	97.4	101.2	108.2	110.5	113.0	115.7	114.4	105.8	120.3

Note:

1. Position 1 faces the Generator front per ISO 8528-10. The positions proceed around the generator set in a counter-clockwise direction in 45° increments. All positions are at 7m (23 ft) from the surface of the generator set and 1.2 m (48 inches) from floor level.
2. Sound levels are subject to instrumentation, measurement, installation and manufacturing variability.
3. Data based on full rated load.
4. Sound data for generator set with infinite exhaust do not include exhaust noise.
5. Sound Pressure Levels are measured per ANSI S1.13 and ANSI S12.18, as applicable.
6. Reference sound pressure is 20 µPa.
7. Sound Power Levels per ISO 3744 and ISO 8528-10, as applicable.
8. Reference power – 1 pW (10⁻¹² W)
9. Exhaust Sound Power Levels are per ISO 6798, as applicable.

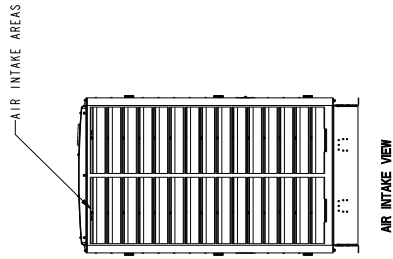
add this weight to the open unit weight for overall shipping weight.
Use this drawing for overall shipping dimensions.

ECO-164828 X 1 PRODUCTION RELEASE

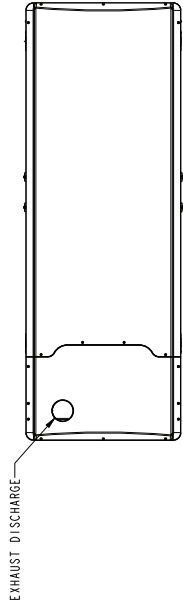
REV.	DATE	BY	CHK.	DESCRIPTION
1				ECO-164828 X 1 PRODUCTION RELEASE

NOTES:

1. DIM (1) IN INCHES
2. WITH THIS HOUSING INSTALLED ON AN OPEN GENERATOR SET, THE TOTAL HEIGHT WILL INCREASE BY 146 MM (5.75 INCH). THIS INCLUDES THE MUFFLER.
3. THE CENTER OF GRAVITY OF THE GENERATOR SET WHEN EQUIPPED WITH THIS HOUSING SHIFTS APPROXIMATELY 7MM (0.27 INCH), TOWARDS THE AIR DISCHARGE END OF THE HOUSING. AND 43MM (1.69 INCH) TOWARDS THE GROUND. HOUSING DIMENSIONS AND CENTER OF GRAVITY LOCATIONS IN THE F119 SKID SEE HOUSING READY-TO-INSTALL BASE OUTLINE DRAWING FOR CG LOCATION OF NON-HOUSED PRODUCT.

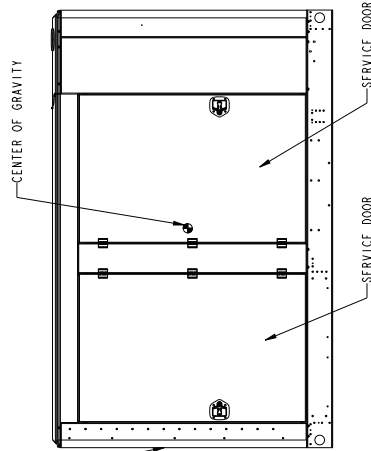


AIR INTAKE VIEW

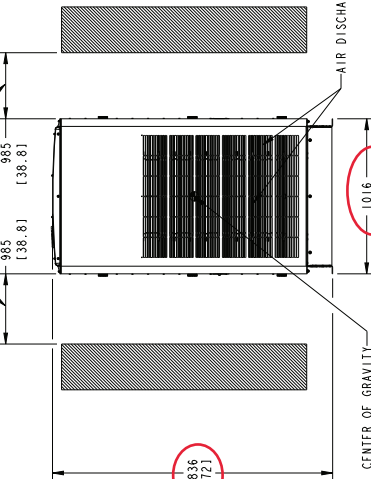


TOP VIEW

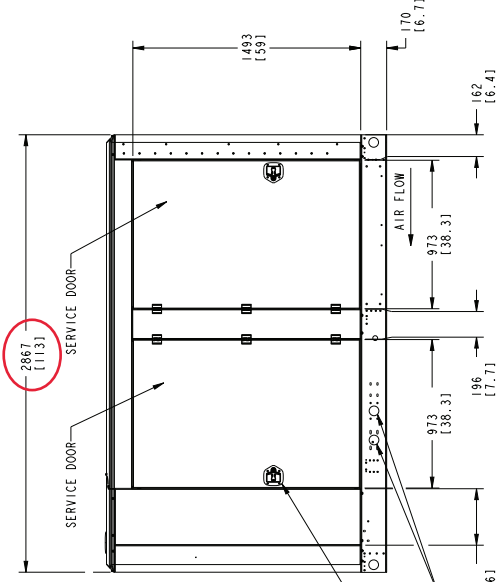
DISTANCE REQUIRED TO OPEN DOORS



RIGHT SIDE VIEW



AIR OUTLET VIEW

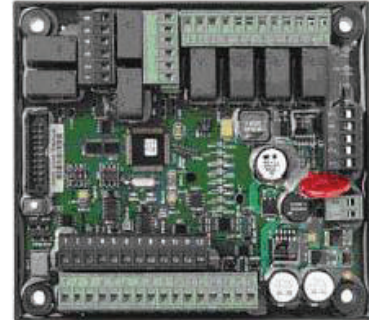


LEFT SIDE VIEW

F216-2 ENCLOSURE CONFIGURATION

UNLESS OTHERWISE SPECIFIED, ALL DIMENSIONS ARE IN MILLIMETERS		ECO PART SCALE PRINT		SITE CODE	
1:1	0.00-4.99	1:1	0.00-4.99	1:1	0.00-4.99
2:1	5.00-9.99	2:1	5.00-9.99	2:1	5.00-9.99
3:1	10.00-14.99	3:1	10.00-14.99	3:1	10.00-14.99
4:1	15.00-19.99	4:1	15.00-19.99	4:1	15.00-19.99
5:1	20.00-24.99	5:1	20.00-24.99	5:1	20.00-24.99
6:1	25.00-29.99	6:1	25.00-29.99	6:1	25.00-29.99
7:1	30.00-34.99	7:1	30.00-34.99	7:1	30.00-34.99
8:1	35.00-39.99	8:1	35.00-39.99	8:1	35.00-39.99
9:1	40.00-44.99	9:1	40.00-44.99	9:1	40.00-44.99
10:1	45.00-49.99	10:1	45.00-49.99	10:1	45.00-49.99
11:1	50.00-54.99	11:1	50.00-54.99	11:1	50.00-54.99
12:1	55.00-59.99	12:1	55.00-59.99	12:1	55.00-59.99
13:1	60.00-64.99	13:1	60.00-64.99	13:1	60.00-64.99
14:1	65.00-69.99	14:1	65.00-69.99	14:1	65.00-69.99
15:1	70.00-74.99	15:1	70.00-74.99	15:1	70.00-74.99
16:1	75.00-79.99	16:1	75.00-79.99	16:1	75.00-79.99
17:1	80.00-84.99	17:1	80.00-84.99	17:1	80.00-84.99
18:1	85.00-89.99	18:1	85.00-89.99	18:1	85.00-89.99
19:1	90.00-94.99	19:1	90.00-94.99	19:1	90.00-94.99
20:1	95.00-99.99	20:1	95.00-99.99	20:1	95.00-99.99
21:1	100.00-104.99	21:1	100.00-104.99	21:1	100.00-104.99
22:1	105.00-109.99	22:1	105.00-109.99	22:1	105.00-109.99
23:1	110.00-114.99	23:1	110.00-114.99	23:1	110.00-114.99
24:1	115.00-119.99	24:1	115.00-119.99	24:1	115.00-119.99
25:1	120.00-124.99	25:1	120.00-124.99	25:1	120.00-124.99
26:1	125.00-129.99	26:1	125.00-129.99	26:1	125.00-129.99
27:1	130.00-134.99	27:1	130.00-134.99	27:1	130.00-134.99
28:1	135.00-139.99	28:1	135.00-139.99	28:1	135.00-139.99
29:1	140.00-144.99	29:1	140.00-144.99	29:1	140.00-144.99
30:1	145.00-149.99	30:1	145.00-149.99	30:1	145.00-149.99
31:1	150.00-154.99	31:1	150.00-154.99	31:1	150.00-154.99
32:1	155.00-159.99	32:1	155.00-159.99	32:1	155.00-159.99
33:1	160.00-164.99	33:1	160.00-164.99	33:1	160.00-164.99
34:1	165.00-169.99	34:1	165.00-169.99	34:1	165.00-169.99
35:1	170.00-174.99	35:1	170.00-174.99	35:1	170.00-174.99
36:1	175.00-179.99	36:1	175.00-179.99	36:1	175.00-179.99
37:1	180.00-184.99	37:1	180.00-184.99	37:1	180.00-184.99
38:1	185.00-189.99	38:1	185.00-189.99	38:1	185.00-189.99
39:1	190.00-194.99	39:1	190.00-194.99	39:1	190.00-194.99
40:1	195.00-199.99	40:1	195.00-199.99	40:1	195.00-199.99
41:1	200.00-204.99	41:1	200.00-204.99	41:1	200.00-204.99
42:1	205.00-209.99	42:1	205.00-209.99	42:1	205.00-209.99
43:1	210.00-214.99	43:1	210.00-214.99	43:1	210.00-214.99
44:1	215.00-219.99	44:1	215.00-219.99	44:1	215.00-219.99
45:1	220.00-224.99	45:1	220.00-224.99	45:1	220.00-224.99
46:1	225.00-229.99	46:1	225.00-229.99	46:1	225.00-229.99
47:1	230.00-234.99	47:1	230.00-234.99	47:1	230.00-234.99
48:1	235.00-239.99	48:1	235.00-239.99	48:1	235.00-239.99
49:1	240.00-244.99	49:1	240.00-244.99	49:1	240.00-244.99
50:1	245.00-249.99	50:1	245.00-249.99	50:1	245.00-249.99

PowerCommand[®] input/output expansion module AUX 101 and AUX 102



Description

The PowerCommand AUX 101 input/output module and the AUX 102 input/output expansion module provide up to sixteen (16) relay output and up to twelve (12) discrete/analog inputs for auxiliary control and monitoring of the power system.

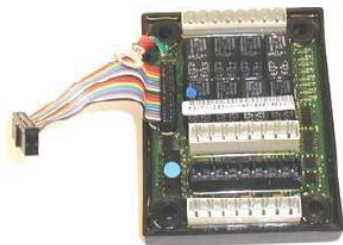
Analog/discrete inputs can be used for system fault expansion and/or generator set metering.

Relay outputs can be used for controlling equipment such as motors, louvers, lamps, fans and pumps. The relays may be configured individually from the genset control operator interface or using InPower™ software.

The AUX 101 and AUX 102 modules are compatible with genset controls supporting a PCCNet network and require a twisted pair connection. This includes the PCC 1301 control.

AUX 101 - Contains eight (8) Form-C relay output sets and eight (8) discrete/analog inputs.

AUX 102 - Easily connects to the AUX 101 to provide an additional eight (8) Form-C relay outputs and (4) additional discrete inputs.



AUX 102 - Expansion

Features

- Up to sixteen (16) configurable Form-C relays provide easy control of system equipment such as lamps, louvers, motors and pumps. LED status of each relay.
- Up to twelve (12) configurable discrete inputs for monitoring equipment status and faults. Equipment status and faults will be annunciated.
- Up to eight (8) analog inputs. Analog inputs can be assigned one of seven preprogrammed functions:
 - Oil temperature
 - Exhaust temperature
 - Fuel level
 - Ambient temperature
 - Alternator RTD
 - Speed bias (for manual paralleling only)
 - Voltage bias (for manual paralleling only)
- Two 5 VDC voltage sources for use with active senders.
- Four programmable current sources for use with resistive senders.
- Two status LEDs:
 - DS1 (green) indicates the AUX 101 is connected to the network and operating normally
 - DS2 (red) indicates the AUX 101 has lost its connection or is not connected to the network
- Device number indicator. Seven segment LED used to uniquely define more than one AUX 101 on the same network.
- May be connected at any point in the PCCNet network.
- Plug-and-play networking - No binding required.
- Pluggable terminal blocks allow easy one-time wiring.
- Less wiring makes installation and system upgrades quick and easy
- PowerCommand controls are supported by a worldwide network of independent distributors who provide parts, service and warranty support.
- UL Listed and labeled; CSA certified; CE compliant.

Specifications

Signal requirements

Network connections: RS485, twisted-pair 78 kbps

Control power: 5-40 VDC

Current

- 200 mA typical at 12 V, no active relay
- 100 mA typical at 24 V, no active relay
- 800 mA at 12 V, all relays active

Terminations for control power accept wire up to 16 ga.

Environment

The AUX 101 and AUX 102 are designed for proper operation in ambient temperatures from -40 °C to +60 °C (-40 °F to +140 °F) and for storage from -40 °C to +80 °C (-40 °F to +176 °F). Modules will operate with humidity up to 95%, non-condensing

Configurations

All configurations are stored in the main genset control and are modified from the generator set control HMI or using InPower PC software.

Discrete/analog inputs:

Each AUX 101 input can be configured as discrete or analog. AUX 102 inputs are discrete only. Discrete inputs have the following configuration options:

- Active high or active low
- Event, warning or shutdown
- Programmable text (displayed on genset HMI and InPower software)

Analog inputs have a set of predefined functions and can only be configured on certain module inputs. Below is a list of functions and possible module inputs:

- Input 1 - Voltage bias (-3 to +3 VDC)*
- Input 2 - Speed bias (0 to +5 VDC)*
- Inputs 3 – 6
 - Oil temperature
 - Exhaust temperature
 - Ambient air temperature
 - Fuel level
 - Alternator temperature

Inputs are defaulted to disabled

* Please note that speed and voltage bias interfaces are for manual paralleling only and must not be used with automatic paralleling controls.

Relay ratings (AUX 101)

- Normally closed: 3 A at 250 VAC or 30 VDC
- Normally open: 5 A at 250 VAC or 30 VDC

Relay ratings (AUX 102)

- 2 A at 125 VAC, 2 A at 30 VDC

Input ratings (AUX 101)

- Active low inputs
- Maximum voltage 24 VDC (inputs 1 - 6)
- Maximum voltage 40 VDC (inputs 7 - 8)

Network length

Maximum 1219 m (4000 ft)

Approved wiring

Cat 4 or Cat 5 (stranded)

Relay outputs

Outputs can be configured to energize on occurrence of any event or fault code supported by the genset control. The relay outputs default to the following:

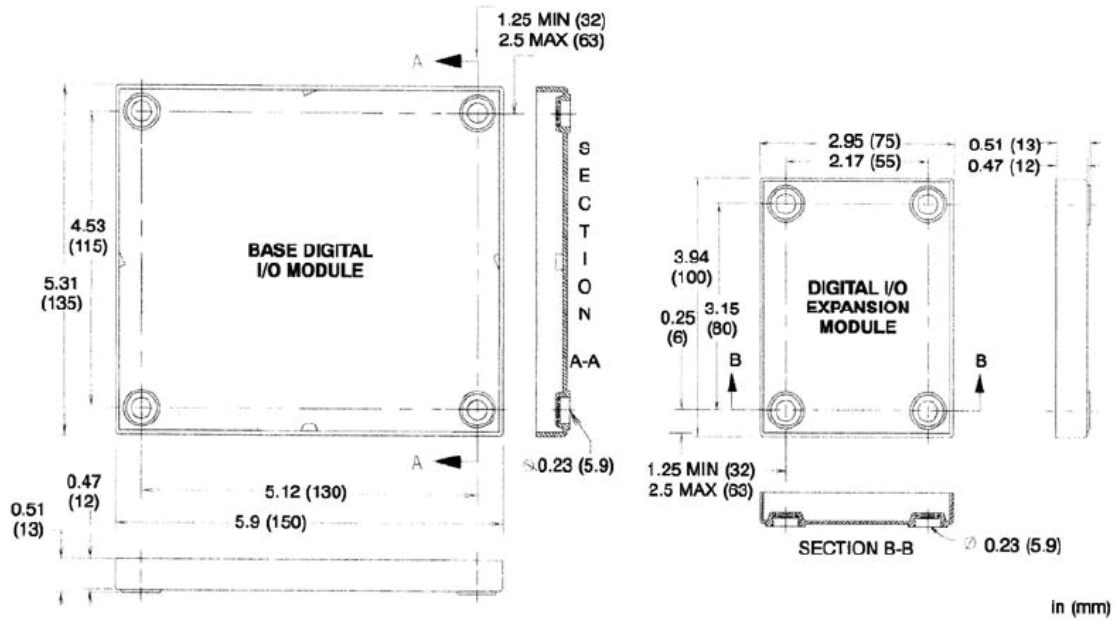
AUX 101

- 1 - Low oil pressure
- 2 - High engine temperature
- 3 - Charger AC failure
- 4 - Battery (low, weak, high)
- 5 - Engine overspeed
- 6 - Fail-to-start
- 7 - Not-in-auto
- 8 - Generator set running

AUX 102

- 9 - Pre-low oil pressure
- 10 - Pre-high engine temperature
- 11 - Low coolant level*
- 12 - Low fuel level*
- 13 - Low coolant temperature
- 14 - Common alarm
- 15 - Not defined
- 16 - Not defined

Dimensions



Ordering information

Part number	Description
0541-1291	AUX 101 Digital Input/output Module - Base – PCC 1301
0184-0263	AUX 101 Digital Input/output Module - Base – PCC 1301 on DN and GN model generator sets
0630-3142	AUX 102 Digital Input/output Module wiring diagram - Instruction sheet C693
0541-0772	AUX 102 Digital Input/output Module - Expansion

PCCNet logo

Look for this logo on spec sheets of PCCNet compatible devices.



located on/near
generator control
panel

For more information contact your local Cummins distributor
or visit power.cummins.com

Our energy working for you.™





Battery charger-6 amp

A045D925 60Hz/50Hz



Description

Cummins Power Generation fully automatic battery chargers are designed to both recharge your batteries, and extend your battery's life in applications where it is stored for long periods of time. This charger can handle poor power quality, exposure to extreme weather and rough handling.

To maximize battery life, a 3-stage charging cycle is implemented. The three charging stages are bulk stage, absorption stage and maintenance stage. During the bulk stage, the charger uses its full amp output to do the heaviest charging, quickly bringing your battery to about 75% of capacity. In the absorption stage, the current slows, adjusting for maximum charging efficiency while it gently tops off the battery to about 98% of capacity.

During the maintenance stage, a lower, closely-regulated, constant voltage is applied to maintain full charge and prevent discharge.

Unlike some "trickle chargers," the float charger won't apply more current than necessary to maintain full charge. Batteries can be connected indefinitely, without harm; in fact, the float charge extends battery life.

Features

Protection – Surge protected to IEEE and EN standards. All models include single pole cartridge type fuses mounted on the printed circuit board to protect against input or output overcurrent.

Lightweight and silent – Lighter than transformer types, completely silent but still provides full output when overloaded outlets drop AC voltage below the normal 115V.

Monitoring – Status LED indicators are provided to show the condition or charging status of the battery. When the red LED is on, it indicates that the battery is discharged and is recharging at the 'BULK' rate. When both the red and green LEDs are on, the battery is charging at the 'midrange' rate. When the green LED is on, the battery is 90% charged and ready for use.

Construction – Made using epoxy-potted cases making it the ultimate in durability, completely waterproof and able to withstand numerous caustic chemicals and gases, as well as being shockproof.

Fault Indication – The charger senses and indicates the following fault conditions: Defective or damaged cells, under-voltage at the battery, battery drawing more current than charger can replace, loss of power or extremely low AC voltage at the charger, other battery fault conditions and charger failure.

Compatibility – Works with Sealed Lead Acid (SLA), Absorbed Glass Mat (AGM) and Gel type batteries.

Low Electromagnetic and Radio

Frequency Interference – This product meets FCC class B for conducted and radiated emissions.

Listed – This product is UL listed according to the UL 1236 Standard.

Warranty – This product has a two year warranty

Specifications

Performance and physical characteristics

Output:	Nominal voltage	12 VDC
	Float voltage – 12 V batteries	13.0-13.6 VDC at 0-2 amps
	Maximum output current	6 A @ 12 VDC nom
Input:	Voltage AC	115, 208, 240 ±10%, 90-135
	Frequency	60 Hz ±5%
Battery:	Maximum battery size	150 Amp Hours
	Maximum recharge time	20 hours
Approximate net weight:		4 lbs. (1.81 Kg)
Approximate dimensions: height x width x depth-in(mm)		2.25 x 6.4 x 3.5 (57 x 162 x 89)
Ambient temperature operation: At full rated output		- 40°F to 158 °F (-40 °C to 70 °C)



Americas

1400 73rd Avenue N.E.
Minneapolis, MN 55432 USA
Phone: 763 574 5000
Fax: 763 574 5298

Europe, CIS, Middle East and Africa

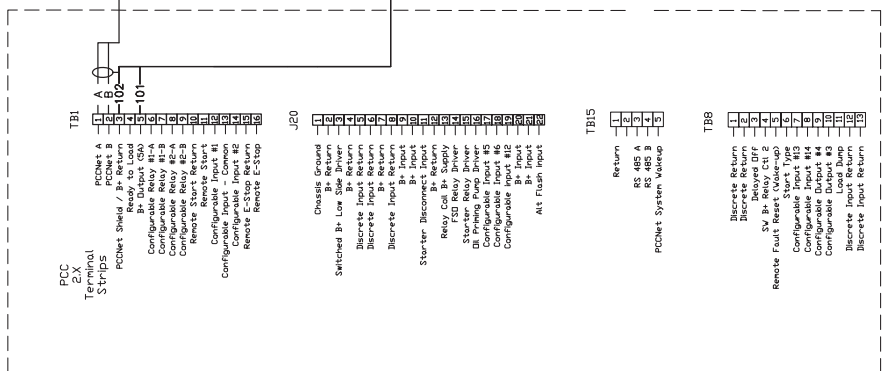
Manston Park Columbus Ave.
Manston Ramsgate
Kent CT 12 5BF United Kingdom
Phone 44 1843 255000
Fax 44 1843 255902

Asia Pacific

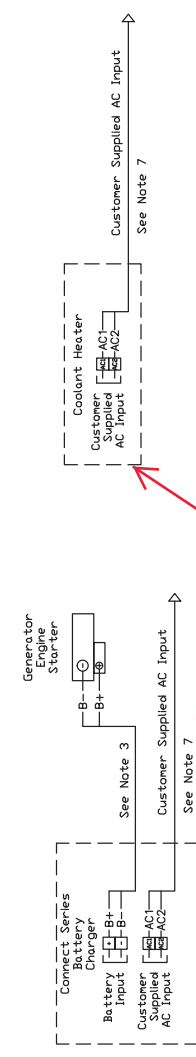
10 Toh Guan Road #07-01
TT International Tradepark
Singapore 608838
Phone 65 6417 2388
Fax 65 6417 2399

Warning: Back feed to a utility system can cause electrocution and/or property damage. Do not connect generator sets to any building electrical system except through an approved device or after building main switch is open.

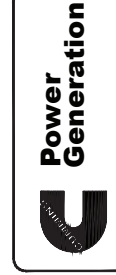
Warning: For professional use only. Must be installed by a qualified service technician. Improper installation presents hazards of electrical shock and improper operation, resulting in severe personal injury and/or property damage.



- Notes:
1. FTI-10 network cable use Belden 8471 or equivalent. Run cable between devices in a "Daisy Chain" configuration. See FTI-10 manual for max distances and further detail.
 2. PCC NET network cable use Belden 9729 or equivalent. See Cummins documentation for max distances and further detail.
 3. See size chart in battery charger installation manual or NEC guide.
 4. See instruction sheet 66730 for Modian II Gateway Kit pinout and further detail.
 5. See instruction sheet 66730 for Modian II Gateway Kit pinout and further detail.
 6. See AUX 101 / 102 Operator Manual for pinout and further detail.
 7. See BDM for voltage.



see page 33 for termination point(s)



Project:
Title:
AUTHOR: D. Fields Date:

Revision:	M
Sheet:	1 of 1

Limited Warranty

Commercial Generating Set

This limited warranty applies to all Cummins Power Generation® branded commercial generating sets and associated accessories (hereinafter referred to as "Product").

This warranty covers any failures of the Product, under normal use and service, which result from a defect in material or factory workmanship.

Warranty Period:

The warranty start date† is the date of initial start up, first rental, demonstration or 18 months after factory ship date, whichever is sooner. See table for details.

Continuous Power (COP) is defined as being the maximum power which the generating set is capable of delivering continuously whilst supplying a constant electrical load when operated for an unlimited number of hours per year. No overload capability is available for this rating.

Prime Power (PRP) is defined as being the maximum power which a generating set is capable of delivering continuously whilst supplying a variable electrical load when operated for an unlimited number of hours per year. The permissible average power output over 24 hours of operation shall not exceed 70% of the PRP. For applications requiring permissible average output higher than stated, a COP rating should be used.

Limited-Time Running Power (LTP) is defined as the maximum power available, under the agreed operating conditions, for which the generating set is capable of delivering for up to 500 hours of operation per year.

Emergency Standby Power (ESP) is defined as the maximum power available during a variable electrical power sequence, under the stated operating conditions, for which a generating set is capable of delivering in the event of a utility power outage or under test conditions for up to 500 hours of operation per year. The permissible average power output over 24 hours of operation shall not exceed 70% of the ESP.

Environmental Protection Agency – Stationary Emergency (EPA-SE) is defined as being the maximum power available during a variable electrical power sequence, under the stated operating conditions, for which a generator set is capable of delivering in the event of a utility power outage or under test conditions and used in strict accordance with the EPA NSPS for stationary engines, 40 CFR part 60, subparts IIII and JJJJ, where a reliable utility must be present. The permissible average power output over 24 hours of operation shall not exceed 70% of the EPA-SE.

Data Center Continuous (DCC) is defined as the maximum power which the generator is capable of delivering continuously to a constant or varying electrical load for unlimited hours in a data center application.

Base Warranty Coverage Duration (Whichever occurs first)

Rating	Months	Max. Hours
COP	12	Unlimited
PRP	12	Unlimited
LTP	12	500 hrs
ESP	24	1000 hrs
EPA-SE	24	Unlimited
DCC	24	Unlimited

† Warranty start date for designated rental and oil and gas model Products is determined to be date of receipt of Product by the end customer.

Cummins Power Generation® Responsibilities:

In the event of a failure of the Product during the warranty period due to defects in material or workmanship, Cummins Power Generation® will only be responsible for the following costs:

- All parts and labor required to repair the Product.
- Reasonable travel expenses to and from the Product site location.
- Maintenance items that are contaminated or damaged by a warrantable failure.

Owner Responsibilities:

The owner will be responsible for the following:

- Notifying Cummins Power Generation® distributor or dealer within 30 days of the discovery of failure.
- Installing, operating, commissioning and maintaining the Product in accordance with Cummins Power Generation®'s published policies and guidelines.
- Providing evidence for date of commissioning.
- Providing sufficient access to and reasonable ability to remove the Product from the installation in the event of a warrantable failure.
- Incremental costs and expenses associated with Product removal and reinstallation resulting from non-standard installations.
- Costs associated with rental of generating sets used to replace the Product being repaired.
- Costs associated with labor overtime and premium shipping requested by the owner.
- All downtime expenses, fines, all applicable taxes, and other losses resulting from a warrantable failure.

Limitations:

This limited warranty does not cover Product failures resulting from:

- Inappropriate use relative to designated power rating.
- Inappropriate use relative to application guidelines.
- Inappropriate use of an EPA-SE application generator set relative to EPA's standards.
- Normal wear and tear.
- Improper and/or unauthorized installation.
- Negligence, accidents or misuse.
- Lack of maintenance or unauthorized repair.
- Noncompliance with any Cummins Power Generation® published guideline or policy.
- Use of improper or contaminated fuels, coolants or lubricants.
- Improper storage before and after commissioning.
- Owner's delay in making Product available after notification of potential Product problem.
- Replacement parts and accessories not authorized by Cummins Power Generation®.
- Use of Battle Short Mode.
- Owner or operator abuse or neglect such as: operation without adequate coolant or lubricants; overfueling; overspeeding; lack of maintenance to lubricating, cooling or air intake systems; late servicing and maintenance; improper storage, starting, warm-up, run-in or shutdown practices, or for progressive damage resulting from a defective shutdown or warning device.

- Damage to parts, fixtures, housings, attachments and accessory items that are not part of the generating set.

This limited warranty does not cover costs resulting from:

- Difficulty in gaining access to the Product.
- Damage to customer property.

A "Data center" is defined as a dedicated facility that house computers and associated equipment for data storage and data handling.

Reliable utility is defined as utility power without routine or regularly scheduled black-outs.

Please contact your local Cummins Power Generation® Distributor for clarification concerning these limitations.

CUMMINS POWER GENERATION® RIGHT TO FAILED COMPONENTS:

Failed components claimed under warranty remain the property of Cummins Power Generation®. Cummins Power Generation® has the right to reclaim any failed component that has been replaced under warranty.

Extended Warranty:

Cummins Power Generation® offers several levels of Extended Warranty Coverage. Please contact your local Cummins Power Generation® Distributor for details.

www.power.cummins.com

THE WARRANTIES SET FORTH HEREIN ARE THE SOLE WARRANTIES MADE BY CUMMINS POWER GENERATION® IN REGARD TO THE PRODUCT. CUMMINS POWER GENERATION® MAKES NO OTHER WARRANTIES, EXPRESS OR IMPLIED, OR OF MERCHANTABILITY OR FITNESS FOR A PARTICULAR PURPOSE.

IN NO EVENT IS CUMMINS POWER GENERATION® LIABLE FOR INCIDENTAL OR CONSEQUENTIAL DAMAGES.

This limited warranty shall be enforced to the maximum extent permitted by applicable law. This limited warranty gives the owner specific rights that may vary from state to state or from jurisdiction to jurisdiction.

Product Model Number: _____
 Product Serial Number: _____
 Date in Service: _____