



**DOOSAN. POWERFUL SOLUTIONS.**



**Portable Generators**  
25 kVA — 570 kVA

***DOOSAN***

# Table of Contents

About Us ..... 1

Powerful Solutions ..... 2

## Diesel Generators

G25 - G70 ..... 3-4

- G25
- G40
- G50
- G70

G125 - G150 ..... 5-6

- G125
- G150

G190 - G325 ..... 7-8

- G190
- G240
- G325

G450 - G570 ..... 9-10

- G450
- G570

## Natural Gas Generators

NG160 - NG295 ..... 11-12

- NG160
- NG225
- NG295

Intelligent Load Management System ..... 13

Load Synchronization and Paralleling ..... 14

Specifications ..... 15-17

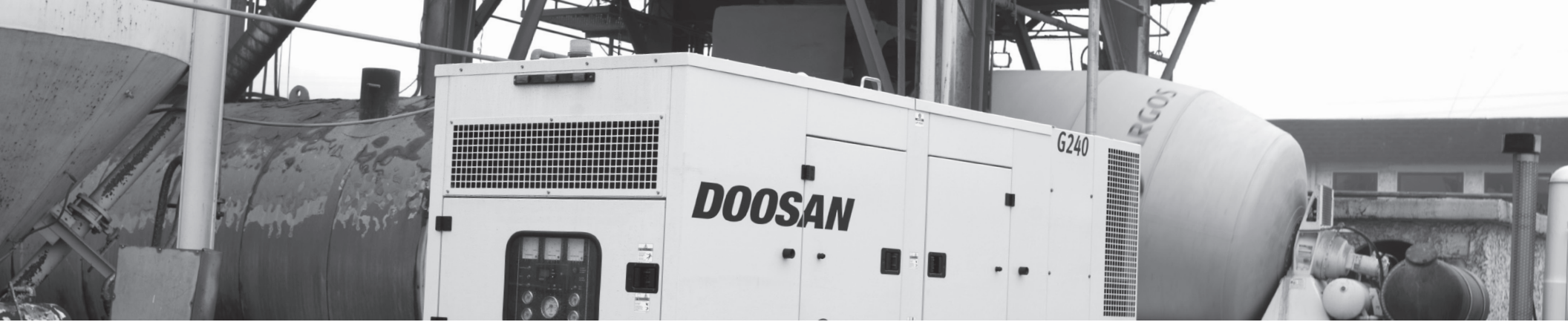


# DOOSAN

## About Us

Doosan Portable Power has more than 100 years of manufacturing expertise and application experience with a focus on providing the highest quality machines with unrivaled customer service and reliability. The product line includes generators, air compressors, light towers and light compaction equipment. Doosan Portable Power manufacturing operations are in Statesville, North Carolina. Doosan Portable Power is a business of Doosan Bobcat North America. For more information on Doosan® products, visit [DoosanPortablePower.com](http://DoosanPortablePower.com).





## Powerful Solutions

At Doosan Portable Power, we do more than provide superior products. We deliver powerful solutions to move your business forward. Robust compressors that perform on the most demanding job sites. Generators and light towers that are reliable and efficient. Factor in our industry-leading service and support, and it's quite clear that partnering with us is a smart return on your investment.

### Dependability

Our equipment is built to last with corrosion-resistant galvanized steel enclosures and a durable, baked-on powder coat finish. Extensive testing at our Statesville, North Carolina facility includes a test track, tilt table, and cold chamber to ensure our machines will perform in the harshest conditions and applications.

Doosan is fully committed to delivering quality machines that maximize uptime and minimize downtime to give you peace of mind.

---

*“The quality is a 10. The durability is a 10.”*

-Jack Anderson, Pape Material Handling

### Performance

Doosan Portable Power gives you the power you need in the most efficient manner. We provide leading fuel economy and performance while ensuring compliance with the latest emissions standards.

Doosan also offers unmatched versatility to support almost every job or application. And with user friendly controls and diagnostics, anyone can operate our equipment with minimal instruction.

---

*“Doosan has always performed well for us.”*

-Mark Grimes, Industrial Marine

### Serviceability

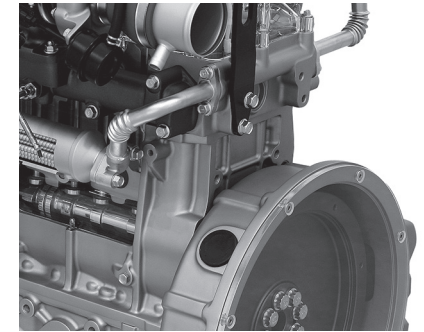
Doosan has an extensive and knowledgeable dealer network. Our dealer-partners have a deep understanding of your business and can provide the solutions you demand.

All of our products are engineered and designed with an emphasis on accessibility to make sure routine maintenance is quick and easy to perform without having to take the machine apart.

---

*“Parts and service are always there when we need it.”*

- Mike Venuti, Meruelo Group



The high performance Doosan engine features a diesel oxidation catalyst (DOC) aftertreatment system, which is virtually maintenance-free.



Standard units feature multi-voltage and 50/60Hz capability to meet a broad range of applications.

## G25

Full specifications on page 15



**PRIME POWER RATING** 25 kVA | 20 kW

## G40

Full specifications on page 15



**PRIME POWER RATING** 39 kVA | 31 kW

## G50

Full specifications on page 15



**PRIME POWER RATING** 48 kVA | 38 kW

## G70

Full specifications on page 15



**PRIME POWER RATING** 70 kVA | 56 kW

### G25-G70 Generators

When you need reliable, dependable power, look to Doosan Portable Power. Our mobile generator range covers applications from 25 to 570 kVA and meets the demanding requirements of rental, construction, events and entertainment, and disaster recovery customers. These rugged packages are designed to perform in the harshest environments—from the frozen oil fields of northern Canada to the scorching desert of the American southwest—you can be confident that your generator has the quality and durability to meet the demands of the most challenging applications.

The G25-70 range is powered by fuel efficient Doosan diesel engines. These state-of-the-art engines have been designed to be powerful and reliable while meeting EPA tier 4 emissions standards without the need for diesel particulate filters. In addition, these high-performance engines provide excellent transient response ensuring precision frequency stability.

The durable CoolBox™ enclosure is acoustically treated to minimize sound levels as low as 63dB(A) while ensuring proper cooling airflow through the package to operate at maximum load in high ambient temperatures.

Doosan mobile generators feature skid baseframes with integrated high capacity fuel tanks which provide a full load runtime of at least 24 hours. In addition, the baseframe is part of the environmental containment system that prevents spillage or fuel or oil outside of the package and safeguarding the environment. And our heavy-duty running gear system mounts easily to the baseframe with low profile, torsion-style axles with your choice of electric or hydraulic surge brakes, bolt-on fenders, and adjustable height hitches to ensure safe and easy towing—on-road or off.

G150

DOOSAN

DOOSAN



 <b>NOTICE</b> DIESEL EXHAUST FLUID (DEF) ONLY	 <b>NOTICE</b> DIESEL EXHAUST FLUID (DEF) ONLY	 <b>NOTICE</b> EXTERNAL DEF FILL
---	---	--

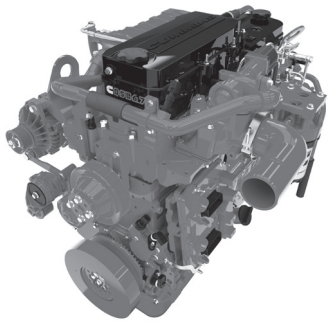
GALE ANNEALED STEEL  
FOR  
CORROSION RESISTANCE

0  
78

**CAUTION**



The easy-to-use operator panel includes the powerful TG410 controller and is complimented by a full array of analog gauges, greatly simplifying control and monitoring.



The G125-325 range is powered by Cummins diesel engines which include DOC/SCR aftertreatment and meet tier 4 regulations without DPFs, ensuring reliable performance and reduced maintenance.

## G125

Full specifications on page 15



**PRIME POWER RATING 125 kVA | 100 kW**

### G125 & G150 Generators

The G125-150 models include the upgraded CoolBox Plus™ enclosure design which adds a temperature-controlled, variable-speed cooling fan to the package. This allows enhanced performance in extreme ambient temperature while further improving sound attenuation and reducing water ingress across the operating range.

Doosan mobile generators produce a broad range of output voltages thanks to the standard three-position voltage selector switch. The VSS is protected from unauthorized access and will shut the machine down to prevent switching during operation. The customer connection panel is spacious and designed to accept a wide variety of power cables. The convenience receptacle panel includes 240V single

## G150

Full specifications on page 15



**PRIME POWER RATING 154 kVA | 123 kW**

phase twist-lock receptacles and 120V GFCI receptacles that are powered any time the unit is running.

Doosan's advanced controls include an LCD display which announces any warnings or shutdowns. In addition, the controller logs all system faults, greatly aiding technicians with diagnostics. The system also supports remote auto start/stop control, plus integration with various telematics systems.

The G125-325 range is powered by Cummins tier 4-compliant diesel engines, paired with high capacity diesel exhaust fluid (DEF) tanks to ensure the DEF supply is matched to the available fuel supply.

# DOOSAN. POWERFUL SOLUTIONS.

DoosanPortablePower.com  
800.727.8457



**DOOSAN**

G240

TAF

Environmental



# DOOSAN. POWERFUL SOLUTIONS.

## G190

Full specifications on page 16



**PRIME POWER RATING** 181 kVA | 145 kW

## G240

Full specifications on page 16



**PRIME POWER RATING** 236 kVA | 188 kW

## G325

Full specifications on page 16



**PRIME POWER RATING** 334 kVA | 270 kW

### G190-G325 Generators

The G190-G325 range features the exclusive DualBox™ enclosure design. This innovative enclosure separates the powertrain from the cooling system, allowing independent control of the cooling performance in each compartment. The engine compartment is cooled by dual, variable speed, electric cooling fans designed to maximize sound attenuation and minimize water ingress. The cooling compartment features a high efficiency, centrifugal style cooling fan which improves fuel economy and provides the cooling performance that tier 4 diesel engines need.

A strong and powerful alternator is a must when powering critical jobs, so Doosan selects alternators that exceed the need. Separately-excited, brushless alternators have the motor starting capability required to power tower cranes, rock crushers and oilfield equipment, while the solid state automatic voltage regulators provide the precise voltage control needed in sensitive applications such as concerts, film production and special events. Additionally, Doosan selects the highest-grade insulating materials to ensure long life and resistance to dust and moisture common in mobile applications.

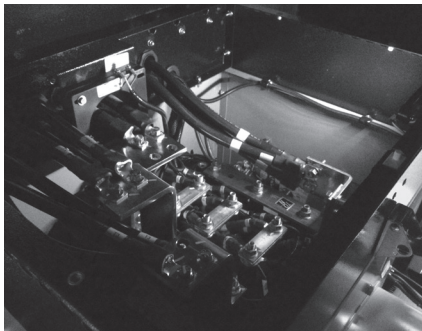
Doosan mobile generators have been designed with the service technician in mind. With 500 hour intervals between fluid and filter exchanges, you can be sure that downtime for maintenance is minimized. All maintenance points are easily accessible and designed for fast and easy service.

DoosanPortablePower.com  
800.727.8457

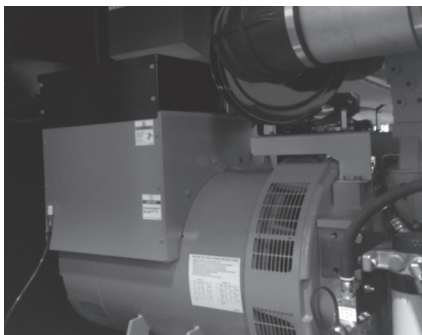


**DOOSAN**

G570



With a hinged access cover and lighted enclosure, the G450-570 link board makes voltage conversion a safe and simple process.



Challenging applications demand powerful alternators. Doosan specifies high-output, separately-excited alternators that ensure unmatched motor starting capability and precision voltage control.

## G450

Full specifications on page 16



**PRIME POWER RATING** 456 kVA | 365 kW

### G450-570 Generators

The G450-G570 range represents some of the most power-dense machines in this class. Powered by Cummins X15 diesel engines, these powerful packages are built to handle big jobs, but have been designed with a compact footprint to simplify transport and job site positioning. With the tri-axle running gear and canopy style CoolBox™ enclosure, these models weigh in at less than 20,000 pounds fully fueled and are towable with vehicles equipped with conventional pintle hitches.

To simplify voltage selection, the G450-G570 models are equipped with an easily accessible

## G570

Full specifications on page 16



**PRIME POWER RATING** 570 kVA | 456 kW

link board. The control panel includes the TG410 controller and a full array of analog gauges for at-a-glance monitoring of system performance.

Doosan offers a broad range of options to customize your generator to suit the needs of your specific application. From cold weather options to extended capacity fuel tanks, to running gear features or custom enclosure colors, Doosan has the solution you need.

# DOOSAN. POWERFUL SOLUTIONS.

DoosanPortablePower.com  
800.727.8457



The onboard scrubber system includes coalescing and particulate filters to remove contaminants from wellhead fuel, while the deliquescent dryer removes liquids from the fuel supply.



Doosan's exclusive fuel pressure gauge provides operators with an at-a-glance indication of incoming gas pressure and easily identifies whether the generator is operating on the primary wellhead fuel supply or on the backup LP supply.

# DOOSAN. POWERFUL SOLUTIONS.

## NG160

Full specifications on page 17



**PRIME POWER RATING** 167 kVA | 134 kW

### Natural Gas Generators

When it comes to meeting the unique requirements of the oil and gas market, Doosan's NG160-NG295 range includes the quality and the features that ensure these units are oilfield ready. Designed to operate on municipal-supplied natural gas, liquid propane (LP), and a broad range of wellhead fuel, these models are clean, efficient and can greatly reduce operating costs compared with diesel units.

Powered by dependable PSI Heavy Duty engines, driving oversized Leroy Somer alternators, the NG160-295 models have the performance to power pump jacks, ESPs,

## NG225

Full specifications on page 17



**PRIME POWER RATING** 224 kVA | 179 kW

and other challenging oilfield applications. For operation on wellhead fuel, Doosan has packaged an onboard fuel scrubber with an automatic drain valve to remove liquids and other contaminants from the fuel supply. The scrubber is protected from the elements within the enclosure and the integrated design simplifies transport, piping, and site commissioning to help increase productivity.

Doosan understands the critical importance of reliable power, especially in applications where downtime equals loss of productivity and revenue. That's why Doosan has developed an innovative NG/LP switching

## NG295

Full specifications on page 17



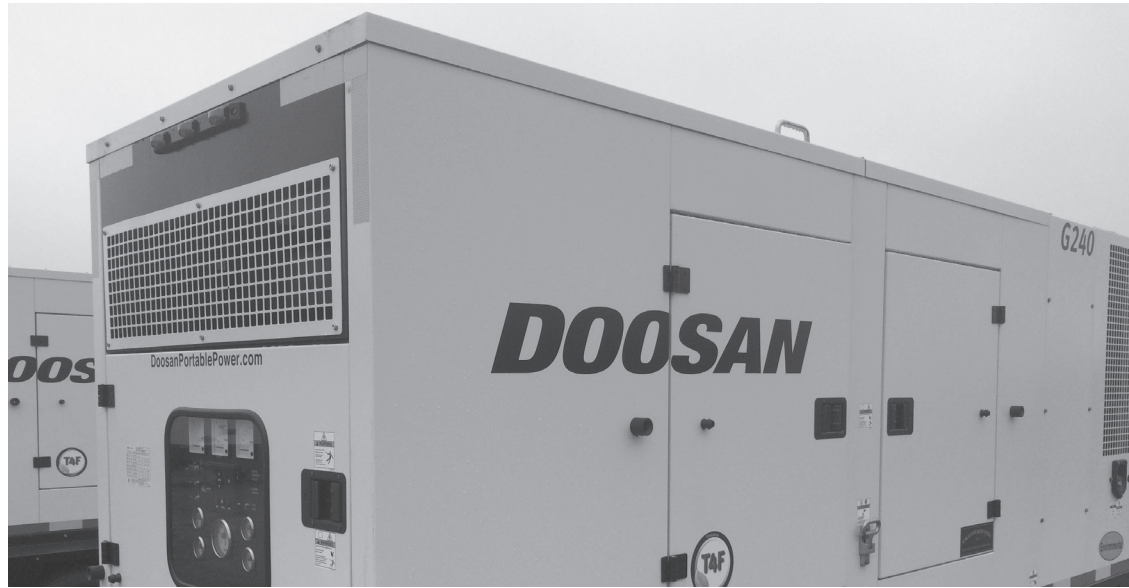
**PRIME POWER RATING** 320 kVA | 256 kW

system that can switch from the primary NG fuel source to a backup LP source at full rated load without any load shedding. Additionally, the automatic oil level maintainer gives peace of mind that the crankcase will remain full, an advantage for units operating in remote areas. And the standard MasterTrak telematics system includes one year of remote monitoring, allowing you to keep watch over the performance of your generators from your computer or smart phone.

NG225

NaturalGas

DoosanPortablePower.com  
800.727.8457



## Intelligent Load Management System

Doosan understands that generators must perform, even in challenging light load applications that may be further affected by extreme low temperature. Whether a cyclical application, such as an oilfield pump jack, or a periodic load, such as a mancamp, even properly sized generators can suffer performance or reliability problems. This is particularly challenging for modern tier 4 engines which require high exhaust temperatures for proper performance of the emissions control components.

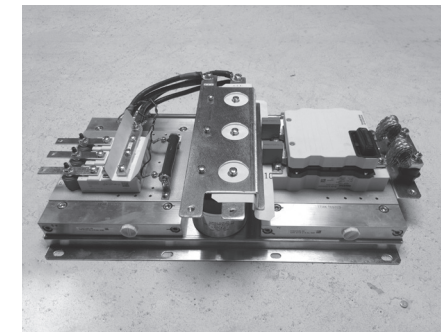
To address these challenges, Doosan has developed the Intelligent Load Management System (ILMS). This patented system adds supplemental heat to the exhaust system and optimizes the temperature so that regeneration and conditioning events occur as designed, eliminating costly downtime and engine fault codes caused by premature plugging of tier 4 exhaust aftertreatment components.

The ILMS is fully automatic and requires no user control or adjustment. The system operates at any voltage produced by the generator and modulates output to provide precisely the right amount of heat required for optimum performance, greatly reducing fuel consumption. Plus, the system can respond instantly to changes in power demand, ensuring that the ILMS will not affect the operation of your connected loads, even for sudden transients such as motor starts.

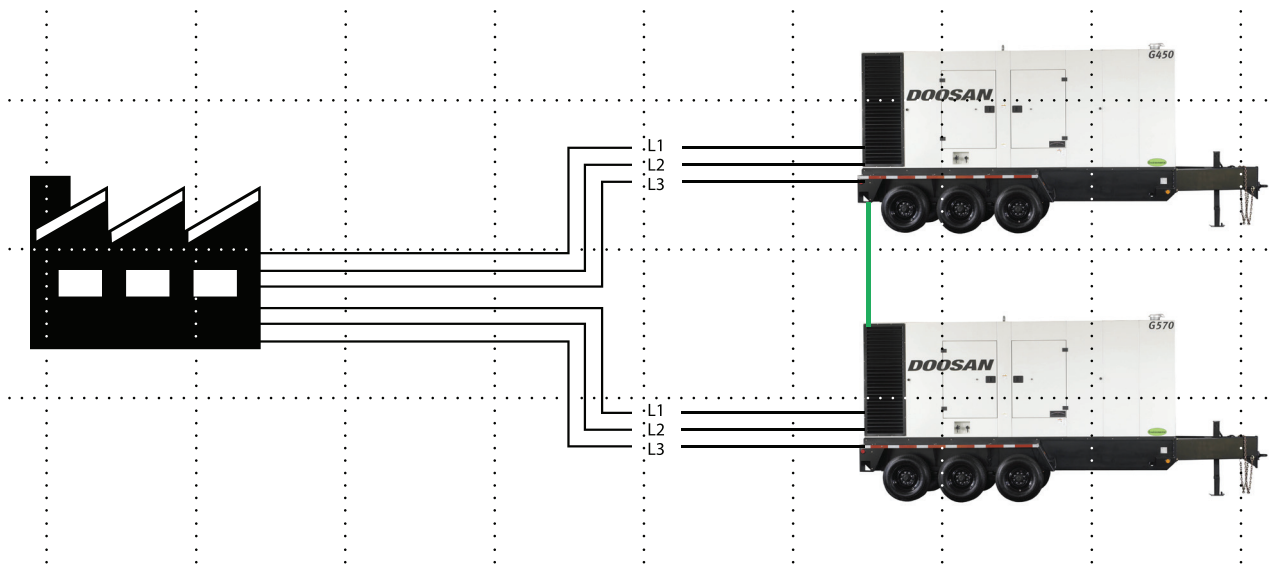
Like all Doosan products, the ILMS components have been designed with the durability and reliability to perform in construction, rental, and oilfield applications and in the harshest of environments. If you have applications where reliability is critical but your power consumption is inconsistent, the ILMS will give you the performance you demand.



Doosan's patented ILMS uses power produced by the generator to add supplemental heat directly to the engine aftertreatment increasing performance and reliability without sacrificing capacity or fuel economy.



Sophisticated power electronics automatically convert any voltage produced by the generator to DC which is pulsed to the ILMS ensuring precise delivery of power without need for any operator setup or adjustment.



AGC4 Controller



AGC243 Controller

## Load Synchronization and Paralleling

For applications that require additional power or desire redundancy to ensure the ultimate reliability, Doosan offers advanced control systems that allow multiple generators to be synchronized and paralleled together. Doosan has partnered with Deif, a global leader in control systems to offer a highly configurable control system capable of supporting a broad range of applications, but also intuitive and easy to operate by rental customers.

The Deif AGC243 is Doosan's entry level solution for paralleling control. The system allows load-sharing of up to 16 generators plus complete machine control and protection, all in a compact all-in-one hardware solution. The operator interface includes a large 6-line LCD display that provides a graphical readout of all system parameters.

Load sharing is accomplished by a two-wire CANbus data link and additionally has the option to communicate with other common brands of controller via a three-wire analog data link. The system offers advanced power management capability including load dependent starting and stopping, asymmetric load-sharing, and priority selection which allow the user to optimize load-sharing based on running hours or fuel consumption.

The system comes fully configured from the factory which greatly simplifies commissioning and set up. The controller is easily programmed through the operator interface or via a laptop interface using Deif's downloadable USW configuration software.

For more advanced applications, Doosan offers the feature-enhanced Deif AGC4 controller which adds to the broad range of features included in the AGC243. Coupled with the Leroy Somer D510C digital AVR, the system can be easily programmed for high performance in challenging applications such as motor starting, transformer energizing, and close before excitation which can synchronize multiple generators in less than 10 seconds following blackout.

Doosan's complete solution includes a fully packaged control system, a motorized main circuit breaker and easy terminations for all required customer connections.

# Specifications

Model	G25WDO-3A-T4F			G40WDO-3A-T4F			G50WDO-3A-T4F			G70WDO-3A-T4F			G125WCU-3A-T4F			G150WCU-3A-T4F		
PRIME POWER RATING	AMPS	KW	KVA	AMPS	KW	KVA	AMPS	KW	KVA	AMPS	KW	KVA	AMPS	KW	KVA	AMPS	KW	KVA
@ 480V-3Ø, 0.8PF, 60Hz	30	20	25	47	31	39	58	38	48	84	56	70	151	100	125	186	123	154
@ 240V-3Ø, 0.8PF, 60Hz	60	20	25	93	31	39	115	38	48	168	56	70	301	100	125	371	123	154
@ 208V-3Ø, 0.8PF, 60Hz	61	17	22	106	31	39	125	36	45	190	55	68	336	97	121	411	118	148
@ 240V-1Ø, 1.0PF, 60Hz	69	16.5	16.5	134	32	32	140	33.6	33.6	209	50	50	360	86	86	433	104	104
@ 120V-1Ø, 1.0PF, 60Hz	69 × 2	16.5	16.5	134 × 2	32	32	140 × 2	33.6	33.6	209 × 2	50	50	360 × 2	86	86	433 × 2	104	104
@ 400V-3Ø, 0.8PF, 50Hz	29	16	20	45	25	31	59	33	41	89	50	62	152	84	105	191	106	132
Voltage Configuration	3-Position Switch			3-Position Switch			3-Position Switch			3-Position Switch			3-Position Switch			3-Position Switch		
Frequency Capability	50Hz/60Hz Switchable			50Hz/60Hz Switchable			50Hz/60Hz Switchable			50Hz/60Hz Switchable			50Hz/60Hz Switchable			50Hz/60Hz Switchable		
ENGINE																		
Engine Make / Model	Doosan D18			Doosan D24			Doosan D24			Doosan D34			Cummins QSB5-G11			Cummins QSB5-G12		
Displacement (L)	1.794			2.392			2.392			3.409			4.5			4.5		
Number of Cylinders	3			4			4			4			4			4		
Power Output @ 1800RPM - HP (kWm)	33.5 (25)			48.8 (36.4)			59.8 (44.6)			85.8 (64)			153 (114)			186 (139)		
Emissions Tier Level	Tier 4 Final			Tier 4 Final			Tier 4 Final			Tier 4 Final			Tier 4 Final			Tier 4 Final		
Aftertreatment Technology	DOC			DOC			DOC			DOC / SCR			DOC / SCR			DOC / SCR		
Usable Fuel Tank Capacity - Gal (L)	46.7 (177)			110 (416)			110 (416)			110 (416)			176.5 (668)			176.5 (668)		
Diesel Exhaust Fluid (DEF) Capacity - Gal (L)	N/A			N/A			N/A			5.2 (19.7)			25 (94.6)			25 (94.6)		
Runtime @ 100% Load - Hr	25.9			44.9			37.2			25			24.9			20.1		
DIMENSIONS WITH RUNNING GEAR																		
Length - in (mm)	130.5 (3315)			130.5 (3315)			130.5 (3315)			163.8 (4161)			171 (4343)			171 (4343)		
Width - in (mm)	72.8 (1850)			72.8 (1850)			72.8 (1850)			71.3 (1810)			72.5 (1841)			72.5 (1841)		
Height - in (mm)	76.6 (1946)			78.4 (1992)			78.4 (1992)			93.3 (2371)			91.0 (2311)			91.0 (2311)		
Weight (Ready to Run) - lb (kg)	3140 (1424)			3870 (1755)			3870 (1755)			5550 (2518)			6950 (3152)			7040 (3193)		
Sound Level @ 23 ft (7m) and 100%	63			64			64			64			68			69		



Model	G190WCU-3A-T4F			G240WCU-3A-T4F			G325WCU-3A-T4F			G450WCU-T2			G570WCU-T2		
PRIME POWER RATING	AMPS	KW	KVA	AMPS	KW	KVA	AMPS	KW	KVA	AMPS	KW	KVA	AMPS	KW	KVA
@ 480V-3Ø, 0.8PF, 60Hz	218	145	181	283	188	236	401	270	334	548	365	456	686	456	570
@ 240V-3Ø, 0.8PF, 60Hz	436	145	181	567	188	236	803	270	334	1097	365	456	1371	456	570
@ 208V-3Ø, 0.8PF, 60Hz	502	145	181	608	175	219	877	252	316	1260	363	454	1416	408	510
@ 240V-1Ø, 1.0PF, 60Hz	458	110	110	567	136	136	821	197	197	N/A	N/A	N/A	N/A	N/A	N/A
@ 120V-1Ø, 1.0PF, 60Hz	458 × 2	110	110	567 × 2	136	136	821 × 2	197	197	N/A	N/A	N/A	N/A	N/A	N/A
@ 400V-3Ø, 0.8PF, 50Hz	238	132	165	289	160	200	404	224	280	N/A	N/A	N/A	N/A	N/A	N/A
Voltage Configuration	3-Position Switch			3-Position Switch			3-Position Switch			Link Board			Link Board		
Frequency Capability	50Hz/60Hz Switchable			50Hz/60Hz Switchable			50Hz/60Hz Switchable			60Hz Only			60Hz Only		
ENGINE															
Engine Make / Model	Cummins QSB7-G8			Cummins QSB7-G9			Cummins QSL9-G9			Cummins QSX15-G9			Cummins QSX15-G9		
Displacement (L)	6.7			6.7			8.9			15			15		
Number of Cylinders	6			6			6			6			6		
Power Output @ 1800RPM - HP (kWm)	219 (163)			282 (210)			393 (293)			680 (507)			680 (507)		
Emissions Tier Level	Tier 4 Final			Tier 4 Final			Tier 4 Final			Tier 2			Tier 2		
Aftertreatment Technology	DOC / SCR			DOC / SCR			DOC / SCR			N/A			N/A		
Usable Fuel Tank Capacity - Gal (L)	330 (1249)			330 (1249)			460 (1741)			574 (2173)			574 (2173)		
Diesel Exhaust Fluid (DEF) Capacity - Gal (L)	25 (94.6)			25 (94.6)			25 (94.6)			N/A			N/A		
Runtime @ 100% Load - Hr	31.7			24.4			24.1			22.3			18.5		
DIMENSIONS WITH RUNNING GEAR															
Length - in (mm)	224 (5689)			224 (5689)			240 (6098)			260.6 (6620)			260.6 (6620)		
Width - in (mm)	83.2 (2114)			83.2 (2114)			83 (2109)			85.2 (2165)			85.2 (2165)		
Height - in (mm)	102.9 (2615)			102.9 (2615)			113 (2870)			118 (2998)			118 (2998)		
Weight (Ready to Run) - lb (kg)	11377 (5172)			11377 (5172)			14032 (6378)			18271 (8288)			18573 (8425)		
Sound Level @ 23 ft (7m) and 100%	69			69			76			74			76		

Model		NG160			NG225F			NG295		
<b>PRIME POWER RATING</b>		AMPS	KW	KVA	AMPS	KW	KVA	AMPS	KW	
@ 480V-3Ø, 0.8PF, 60Hz	Natural Gas	201	134	167	269	179	224	385	256	320
@ 400V-3Ø, 0.8PF, 50Hz	Natural Gas	213	118	147	289	160	200	366	203	253
@ 480V-3Ø, 0.8PF, 60Hz	Propane	146	97	121	175	116	145	261	173	217
@ 400V-3Ø, 0.8PF, 50Hz	Propane	148	82	102	195	108	135	242	134	167
Voltage Configuration		Dedicated Voltage			Dedicated Voltage			Dedicated Voltage		
Frequency Capability		50Hz/60Hz Switchable			50Hz/60Hz Switchable			50Hz/60Hz Switchable		
<b>ENGINE</b>										
Engine Make / Model		PSI 8.1 L Turbo			PSI 11.1 L Turbo			PSI 14.6 L Turbo		
Displacement (L)		8.1			11.6			14.6		
Number of Cylinders		6			6			8		
Power Output @ 1800RPM - NG Fuel - HP (kWm)		201 (150)			268 (200)			390 (290)		
Power Output @ 1800RPM - LP Fuel - HP (kWm)		148 (110)			177 (132)			271 (202)		
Aftertreatment Technology		Three Way Catalyst			Three Way Catalyst			Three Way Catalyst		
Fuel Type & Consumptions (Ft <sup>3</sup> /Hr)	Natural Gas	1539			2115			2782		
	Propane	517			704			926		
<b>FEATURES AND BENEFITS</b>										
Onboard Scrubbing System		Standard			Standard			Standard		
Dual Fuel (NG / LP)		Standard			Standard			Standard		
Full Load NG / LP Switching		Standard			Standard			Standard		
Fuel Source & Pressure Indicator		Standard			Standard			Standard		
LP Vaporizer		Standard			Standard			Standard		
Oil Level Maintainer (25 gallons/95 liters)		Standard			Standard			Standard		
MasterTrak Telematics		Standard			Standard			Standard		
110% Containment		Standard			Standard			Standard		
Oversized Air Filtration		Standard			Standard			Standard		
Running Gear		Standard			Standard			Standard		
<b>DIMENSIONS WITH RUNNING GEAR</b>										
Length - in (mm)		220.7 (5606)			259.4 (6588)			259.4 (6588)		
Width - in (mm)		82.9 (2105)			85.2 (2165)			90.9 (2309)		
Height - in (mm)		105 (2667)			112 (2845)			113.5 (2883)		



**DOOSAN**

**G450**

**DOOSAN**

Environmental

**G450**

**DOOSAN**

**G570**

**DOOSAN**

**9325**

479726

# DOOSAN

Experience Doosan Portable Power and our industry-leading support and service. Whatever the job, we have the solution. From our comprehensive range of reliable air compressors, to lighting systems and generators, we have a solution to fit your needs. Running a successful business takes more than powerful equipment. That's why Doosan Portable Power partners with an experienced dealer network to stand beside you every step of the way. Doosan Portable Power — more than 100 years of providing excellence.



Doosan Portable Power  
1293 Glenway Drive  
Statesville, NC 28625  
[DoosanPortablePower.com](http://DoosanPortablePower.com)

©2017 Doosan Portable Power. All rights reserved.

## Warranty

### Standard Warranty:

1 year / 2,000 hours: Machine  
Engines: Doosan - 3 year / 3,000 hours or 1 year / unlimited hours  
Others: 2 year / 4,000 hours or 1 year / unlimited hours  
Alternator: 2 year / 4,000 hours



Product improvement is a continuous goal at Doosan Infracore Portable Power. Specifications and design are subject to change without notice or obligation. Warranty terms and conditions on new product sales are subject to change. All products are subject to the terms of the applicable warranty in effect on the date of purchase; contact your local Doosan dealer for the current applicable warranty. Doosan® and the Doosan logo are registered trademarks of Doosan Corp. in the United States and various other countries around the world.