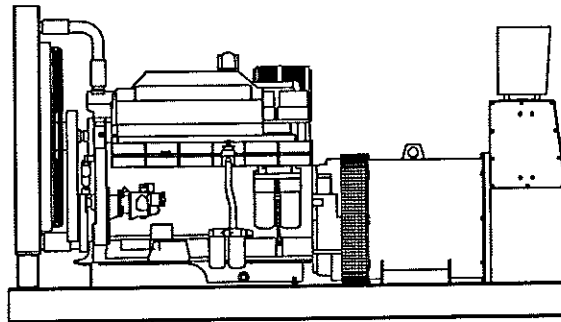


KATOLIGHT® Engine Generator Sets

Diesel

400 KW
60 Hz
330 KW
50 Hz



Water Cooled

Model Selection / Rating Chart

Deration

RATINGS & CHARACTERISTICS				STANDBY		PRIME		ALTITUDE: Derate 2.5% per 1,500 ft (457 m) above 3,300 ft (1,005 m) up to 5,000 ft (1,525 m) and 4% per 1,000 ft (305 m) above 5,000 ft (1,525 m)
Model No.	Hz.	Phase	Volts	kVA	kW	kVA	kW	
1800 RPM				60 Hz.		60 Hz.		TEMPERATURE: Derate 1% per 10°F (2% per 11°C) above 104°F (40°C)
D400FRZ4	60	3	277/480	500	400	437.5	350	
D400FPZ4	60	3	120/208	500	400	437.5	350	
D400FJZ4	60	3	120/240	500	400	437.5	350	
D400FGZ4	60	1	120/240	400	400	350	350	
1500 RPM				50 Hz.		50 Hz.		
D330FRZ5	50	3	220/380	412.5	330	375	300	
D330FPZ5	50	3	110/190	412.5	330	375	300	
D330FJZ5	50	3	110/220	412.5	330	375	300	
D330FGZ5	50	1	110/220	330	330	300	300	

General Specifications

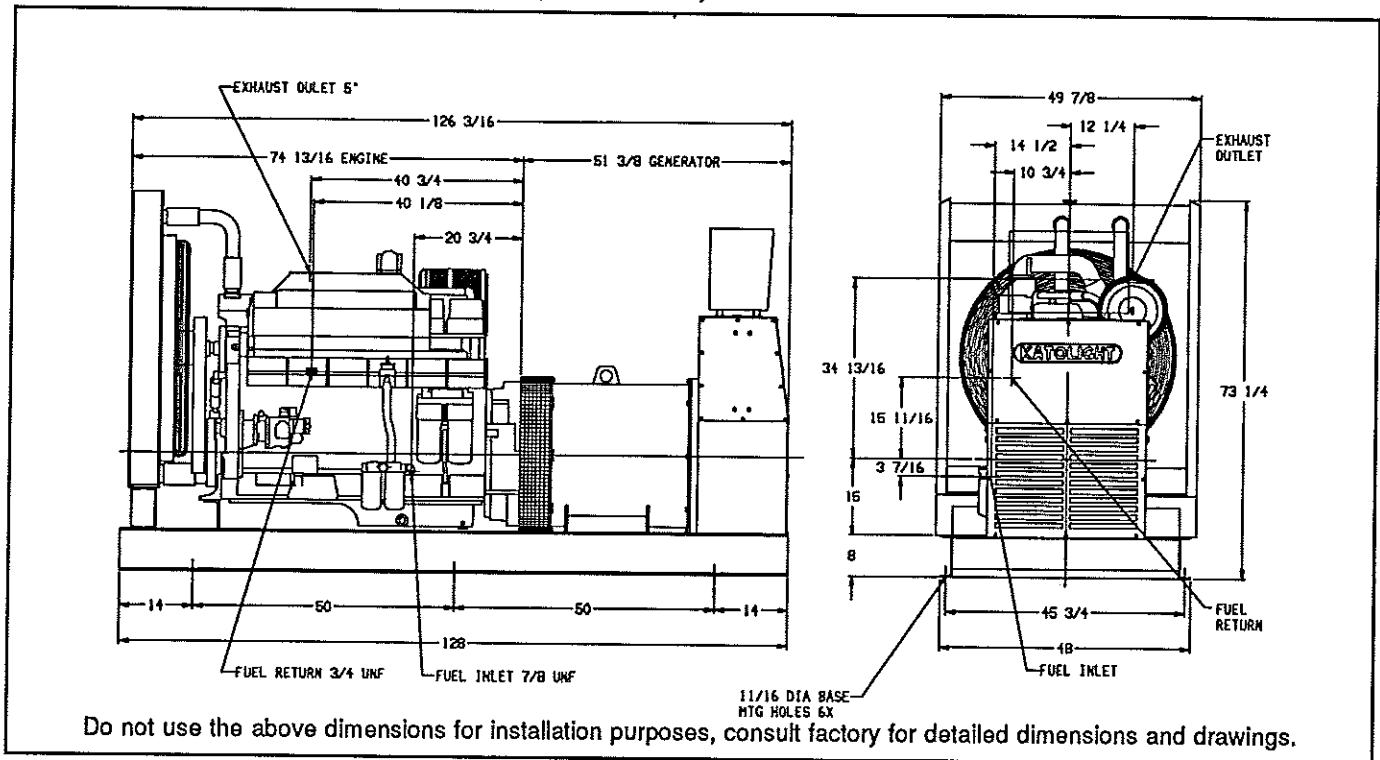
ENGINE: TYPE: Inline Multicylinder, Turbocharged CYCLE: 4 CYLINDER: 6 BORE: in. (cm) 6.25 (16) STROKE: in. (cm) 6.25 (16) DISPLACEMENT: in ³ (lit) 1,150 (18.9) BMEP: psi (kPa) 228 (1,570)				GENERATOR: TYPE: Revolving Field-Brushless-Direct Connected-12 wire CONSTRUCTION: Single Bearing-Close Coupled REGULATION: Static Regulator Maintains 1% of Rated Voltage INSULATION: Class H (dipped and baked) CONNECTION: WYE, DELTA, or Single Phase AMBIENT TEMPERATURE: 104°F (40°C)			
		1800 RPM	1500 RPM				
Hp:		600	495				
kW:		448	369				
ASPIRATING:	cfm (m ³ /min)	1,320 (37)	945 (27)				
FUEL CONSUMPTION:	gal/hr (lit/hr)	30 (114)	24 (91)				

Installation Facts *

			60 Hz Standby		50 Hz Standby	
DIMENSION & WEIGHT			EXHAUST SYSTEM			
•Length	in. (cm)	128 (325)	•Gas Temperature (Stack)	°F (°C)	955 (513)	985 (529)
•Width	in. (cm)	50 (127)	•Gas Volume at Stack Temp.	CFM (m ³ /min)	3,600 (102)	2,360 (75)
•Height	in. (cm)	73.5 (187)	•Maximum Allowable Back Pressure	in. H ₂ O (mmHg)	40.8 (76.2)	40.8 (76.2)
•Dry Weight	lb. (kg)	7,400 (3,357)	COOLING SYSTEM			
LIQUID CAPACITY			•Ambient capability of radiator	°F (°C)	100 (38)	100 (38)
•Oil Sump	gal (lit)	13.2 (50)	•Maximum allowable static pressure on radiator exhaust	in. H ₂ O (mmHg)	0.5 (12.7)	0.5 (12.7)
•Engine Jacket Water Capacity	gal (lit)	8.0 (30)	•Heat rejection to coolant	BTUM (kW)	15,600 (274)	12,870 (226)
•System Coolant Capacity	gal (lit)	22.5 (85)	•Water Pump Capacity	gpm (lit/min)	175 (662)	145 (549)
ELECTRICAL SYSTEM			•Heat radiated to ambient	BTUM (kW)	5,687 (100)	4,671 (82)
•Electric Volt DC		24	AIR REQUIREMENTS			
•Cold Cranking Amps 0 °F (-17.7 °C)		900	•Air flow required for radiator cooled unit	cfm (m ³ /min)	24,000 (680)	20,350 (576)
			•Air flow required for engine with heat exchanger/remote radiator	cfm (m ³ /min)	15,798 (447)	12,975 (367)

*Installation data based on 480 volt application

400 kW, Diesel, Water Cooled



Design & Performance

- Katolight Generator manufactured to meet NEMA-MG-1-22.40 and CSA standards.
- Engine and generator controls are designed and manufactured by Katolight.
- Telephone influence factor is well within NEMA standards.
- Wave form deviation factor is no more than 5%, well within NEMA standards.
- Voltage Regulation - Standard static regulators will keep voltage within 1% of rated voltage.
- Harmonic Content is 3% maximum.
- Permanently lubricated, ball type bearings are used.

Standard Equipment

- A.C. Generator - brushless single bearing
- ENGINE - KTA19.G2 equipped with: fuel pump - primary & secondary fuel filter - lube oil pump - full flow lube oil filter - lube oil cooler - jacket water pump - thermostat - air filter - exhaust manifold - 24 volt electric starting motor and 24 volt charging alternator with ammeter - Electronic Isochronous Governor
- Control Panel - unit mounted: AC voltmeter - AC ammeter - 4 position VM-AM selector switch - frequency meter - KASSEC auto engine control with cyclic cranking, 4 engine shutdowns (high temperature, low oil pressure, engine overspeed, engine overcrank) with separate failure lights - engine gauges (4) - 3 position mode switch.
- Steel sub-base
- Vibration isolators - pad type
- Battery box and cables
- Flexible fuel and exhaust connectors
- Complete factory test

Optional Accessories

- Special Voltages up to 4,160 volts AC.
- Frequency: 50, 60 Hz.
- Special array of temperature rise (50°, 60°, 70°, 80°, 105° and 130 °C) generators available, meeting NEMA-MG-1-22.84 standards.
- Custom designed control systems -- Special metering -- Bussing -- Switch gear.
- Cooling -- Remote radiator/hotwell tank -- Heat exchangers
- Fuel systems -- Valves -- Tanks -- Controls
- Batteries -- Lead acid -- Lead calcium -- Nickel cadmium
- Enclosures -- Weather resistant -- Thermal insulated -- Sound attenuated
- Custom designed trailer mounting

Material and Specifications May Change Without Notice.

KATOLIGHT CORPORATION

3201 Third Avenue

P. O. Box 3229

Mankato, Minnesota 56002-3229

Phone: (507) 625-7973 FAX: (507) 625-2968

For more information contact your nearest Representative, Distributor, or Dealer below: